

This document is made available through the declassification efforts  
and research of John Greenewald, Jr., creator of:

# The Black Vault

---



The Black Vault is the largest online Freedom of Information Act (FOIA) document clearinghouse in the world. The research efforts here are responsible for the declassification of hundreds of thousands of pages released by the U.S. Government & Military.

**Discover the Truth** at: **<http://www.theblackvault.com>**

## Description of JMWAVE Components

### Support Branch

The Support Branch provided routine administrative services to JMWAVE. These included finance, logistics and records management and clerical support. The Branch had 19% of JMWAVE's staffing.

### Operations Branch

The Operations Branch was divided into two sections, the FI Section and the Special Operations Section. Staffing, consisting of operations officers and clerical support, was 17% of JMWAVE's total.

The FI Section (Foreign Intelligence) was responsible for the collection of intelligence from the target country through covert HUMINT means.

The Special Operations Section was responsible for paramilitary operations.

### Covert Action Branch

The Covert Action Branch was responsible for covert propaganda operations. Staffing was 10% of JMWAVE's total and consisted of operations officers and clerical support.

### External Operations Branch

The External Operations Branch was responsible for collecting HUMINT on the target country through assets in areas other than the target country. Staffing was 13% of JMWAVE's total and consisted of operations officers and clerical support.

### Reports Section

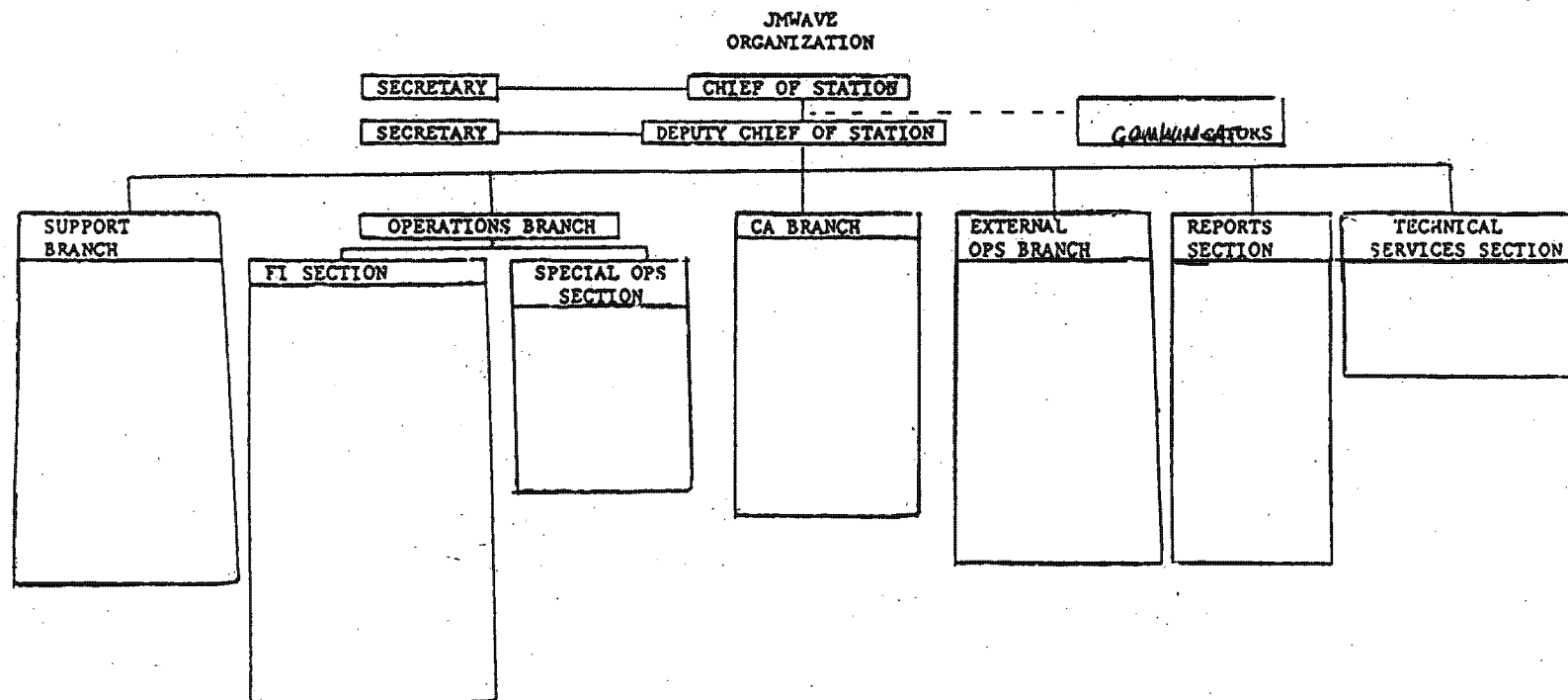
The Reports Section prepared intelligence reports for Headquarters and intelligence community consumers. Staffing was 10% of JMWAVE's total.

### Technical Services Section

The Technical Services Section provided photographic support to JMWAVE. Staffing was 6% of JMWAVE's total.

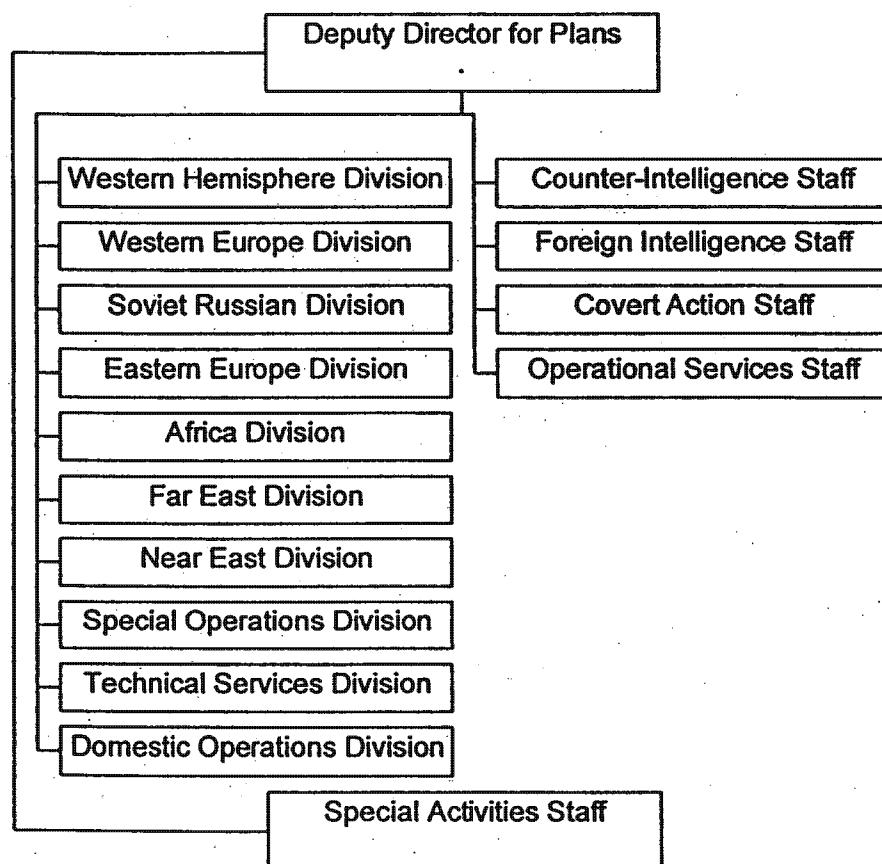
### Communicators

The communicators were responsible for secure communications between JMWAVE and Hqs. Staffing was 8% of JMWAVE's total.



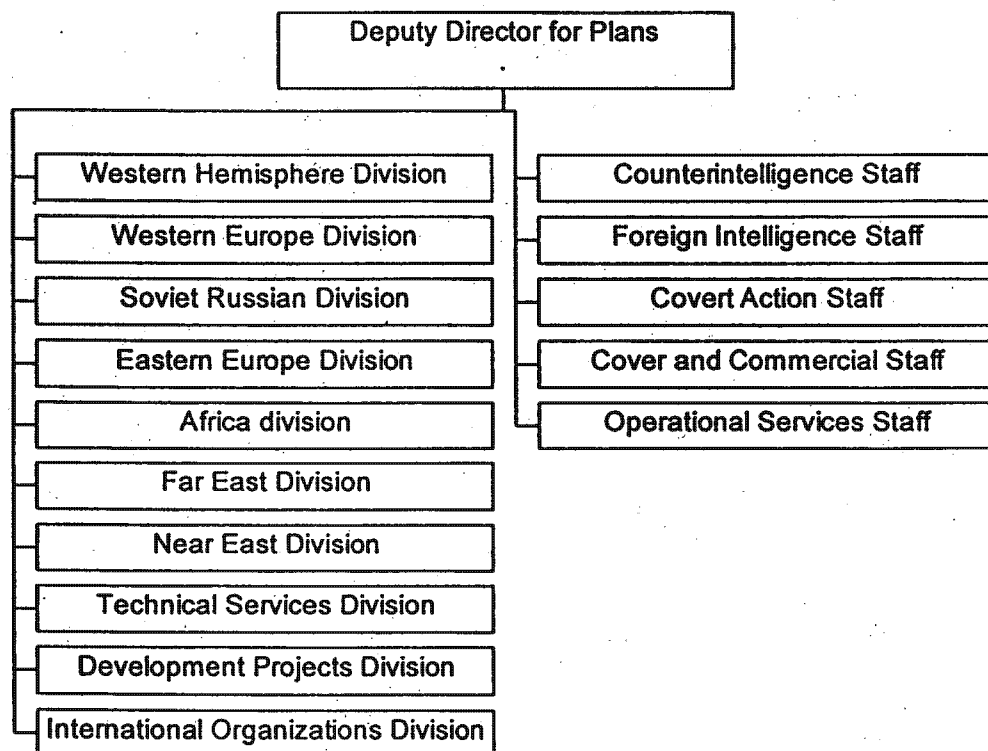
4/10/98 - OKd  
vy DO/IR  
EW

## DEPUTY DIRECTOR FOR PLANS - 1963



4/19/98 OK by  
Do/IRB  
ew

## DEPUTY DIRECTOR FOR PLANS - 1961



JMWAVE  
ORGANIZATION