

THIS FILE IS MADE AVAILABLE THROUGH THE DECLASSIFICATION EFFORTS AND RESEARCH OF:

# THE BLACK VAULT

THE BLACK VAULT IS THE LARGEST ONLINE FREEDOM OF INFORMATION ACT / GOVERNMENT RECORD CLEARING HOUSE IN THE WORLD. THE RESEARCH EFFORTS HERE ARE RESPONSIBLE FOR THE DECLASSIFICATION OF THOUSANDS OF DOCUMENTS THROUGHOUT THE U.S. GOVERNMENT, AND ALL CAN BE DOWNLOADED BY VISITING:

[HTTP://WWW.BLACKVAULT.COM](http://www.blackvault.com)

YOU ARE ENCOURAGED TO FORWARD THIS DOCUMENT TO YOUR FRIENDS, BUT PLEASE KEEP THIS IDENTIFYING IMAGE AT THE TOP OF THE .PDF SO OTHERS CAN DOWNLOAD MORE!



**Western  
Digital**

[www.westerndigital.com](http://www.westerndigital.com)

**WD Caviar<sup>®</sup> SE**

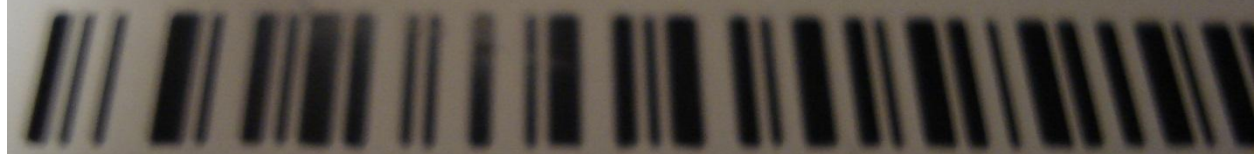
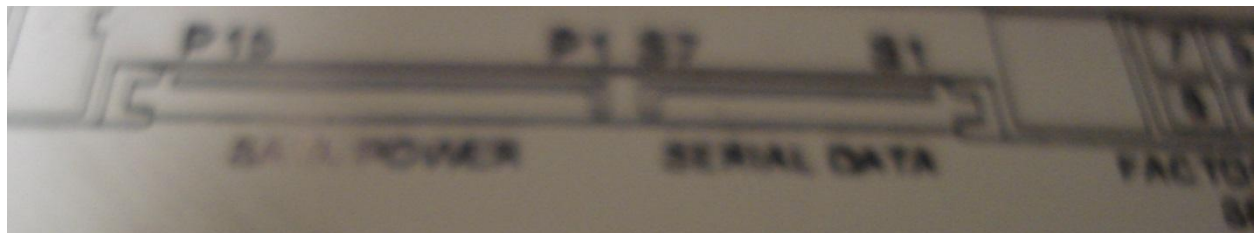
**Serial ATA Hard Drive**

**Drive Parameters: LBA 234441648**

**WD P/N: WD1200JS - 00MHB0**



Master/Slave jump  
Jumped pins 1 and 2



**S/N : WMANN1006724**

**MDL : WD1200JS - 00MHBO**

**DATE: 21 SEP 2005**

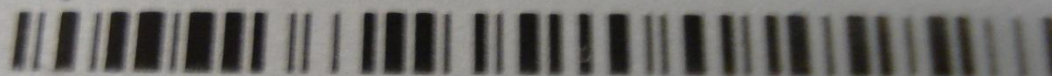
**DCM : HSBHNTJCH**



IMEI: 359116031962625



S/N: HT09SR203106



P/N: 99HLW021 - 00

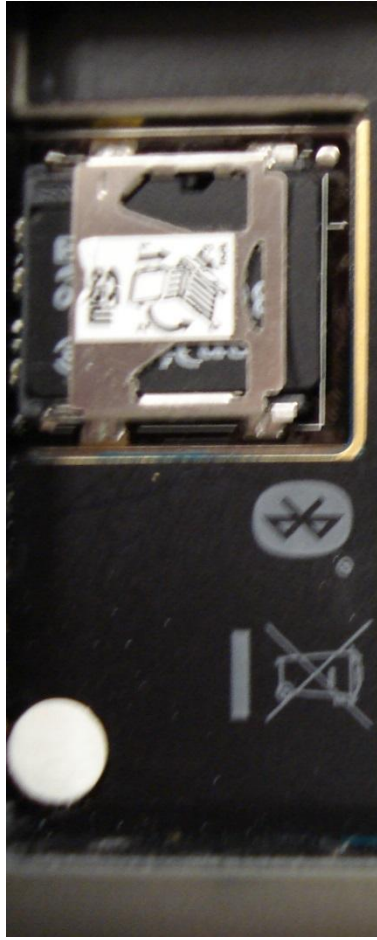
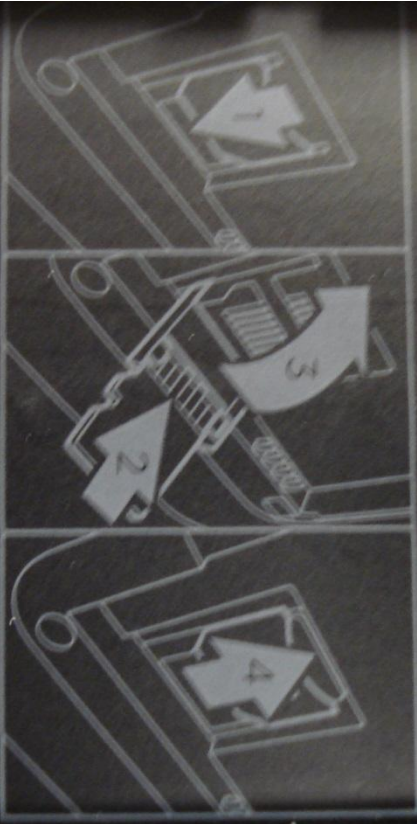
XE

10100 5VDC == 1A FCC ID:NM8PC10100 Mad  
only batteries and power supplies listed in use



IMEI: 359116031962625  
S/N: HT9SR203106  
P/N: 99HLM021-00 XE

FC  
C10100 SVDC 1A FCC ID: N489C10100 Made in Taiwan  
Use only batteries and power supplies listed in user manual



ries and power supplies listed in user

**SanDisk** ©

**8GB**

**micro  
SD  
HC**

101930427001W

MADE IN CHINA



ies and power supplies listed in user

**SanDisk** ©

**8GB**



101800487801N

MADE IN CHINA



MEI: 012185/00/172327/4



Code: 059D431JR282H



SKU: 65215



Model: 3200  
**NOKIA**





IMEI: 012185/00/17232714



Code: 059D-03 UR282H



SKU: 65218

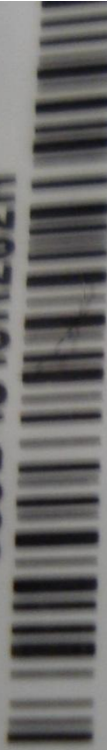


NON  
Model 1.2  
PCC 1017

IMEI: 012185/00/172327/4



Code: 059D431JR282H



SKU: 65215



**NOKIA** Type: RM-515

Model: 2320c-2b

FCC ID: QTLRM-515

IC: 001AB-RM515

2005-05-21 05:40:23

IMEI: 012185/00/172327/4



Code: 059D431JR282H



SKU: 65215



Model: 2322  
FCC ID: Q7T  
IC: 601AB-1

**NOKIA**







Sony Corporation



D33021  
S0K-USM8GH(B)

USM8GH

Made in Taiwan





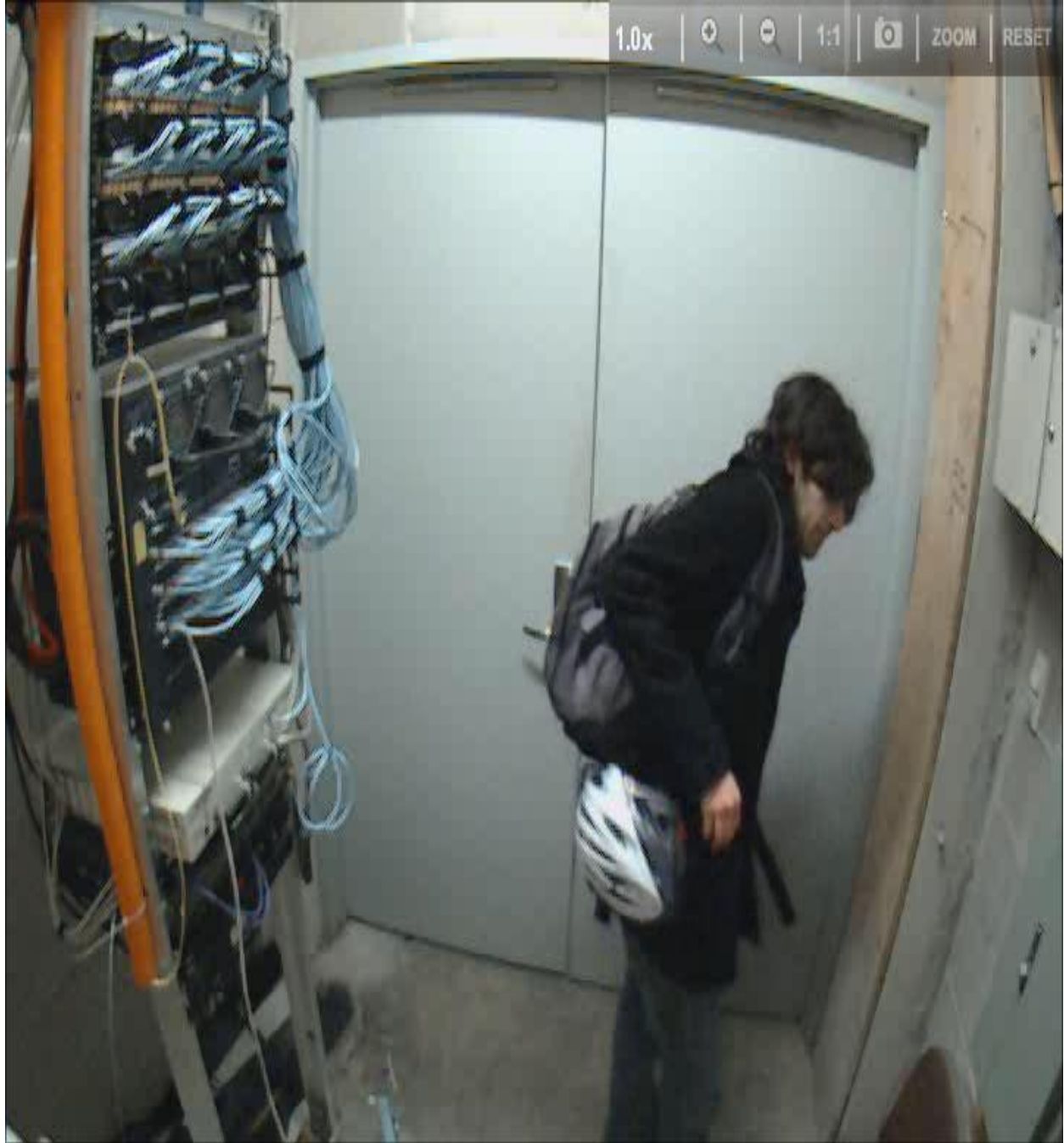










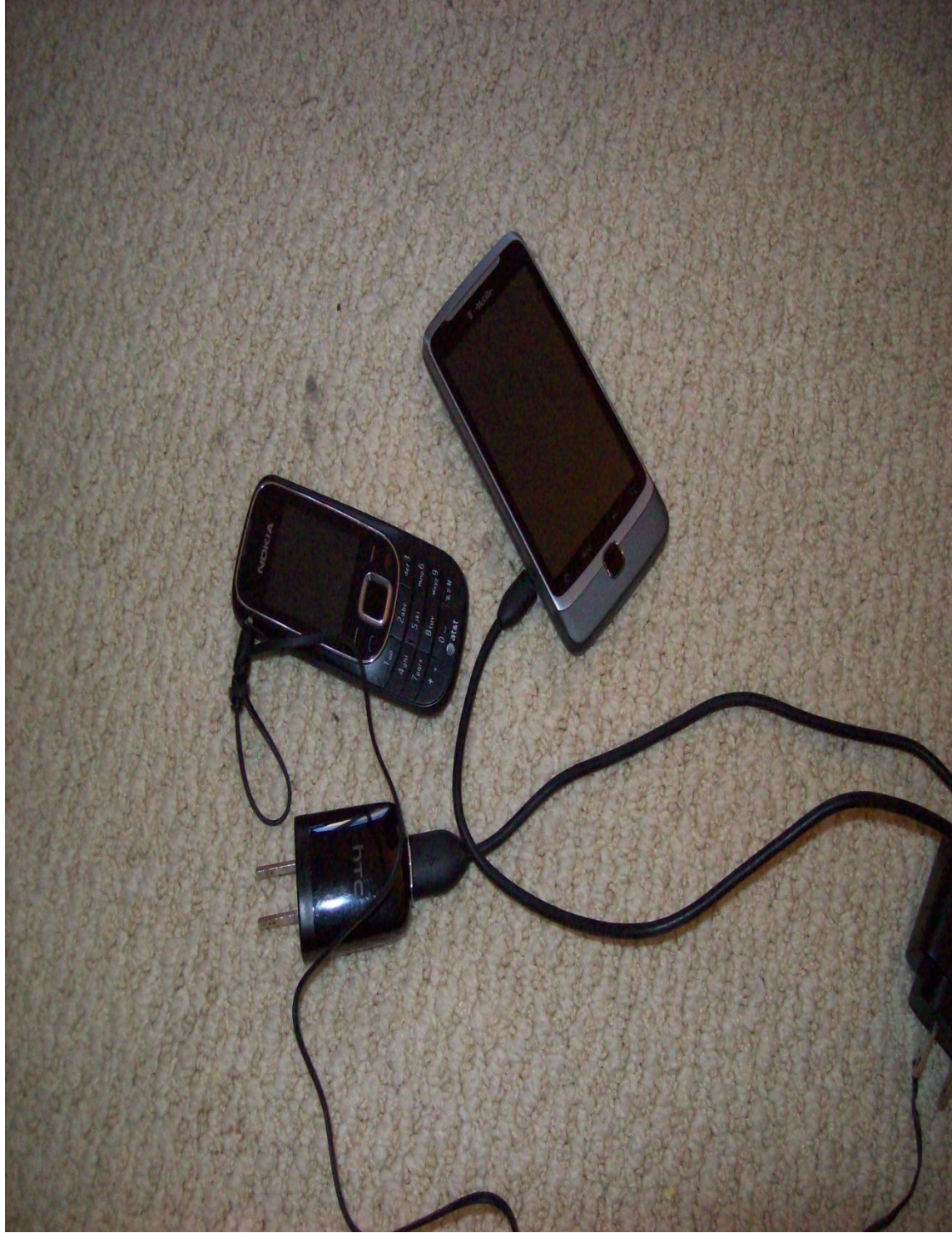


























8 85909129655 2

(1P) Part No. MB990LL/A

(S) Serial No. W894182566D

Model No: A1278

**MacBook Pro**

2.26GHz/160/2x1G/SD

AirPort ID: 002608126A1B

Ethernet ID: 60F-B42FC246

Bluetooth ID: 002608DA2C6F

Designed by Apple in California

1 Infinite Loop Cupertino CA 95014 USA

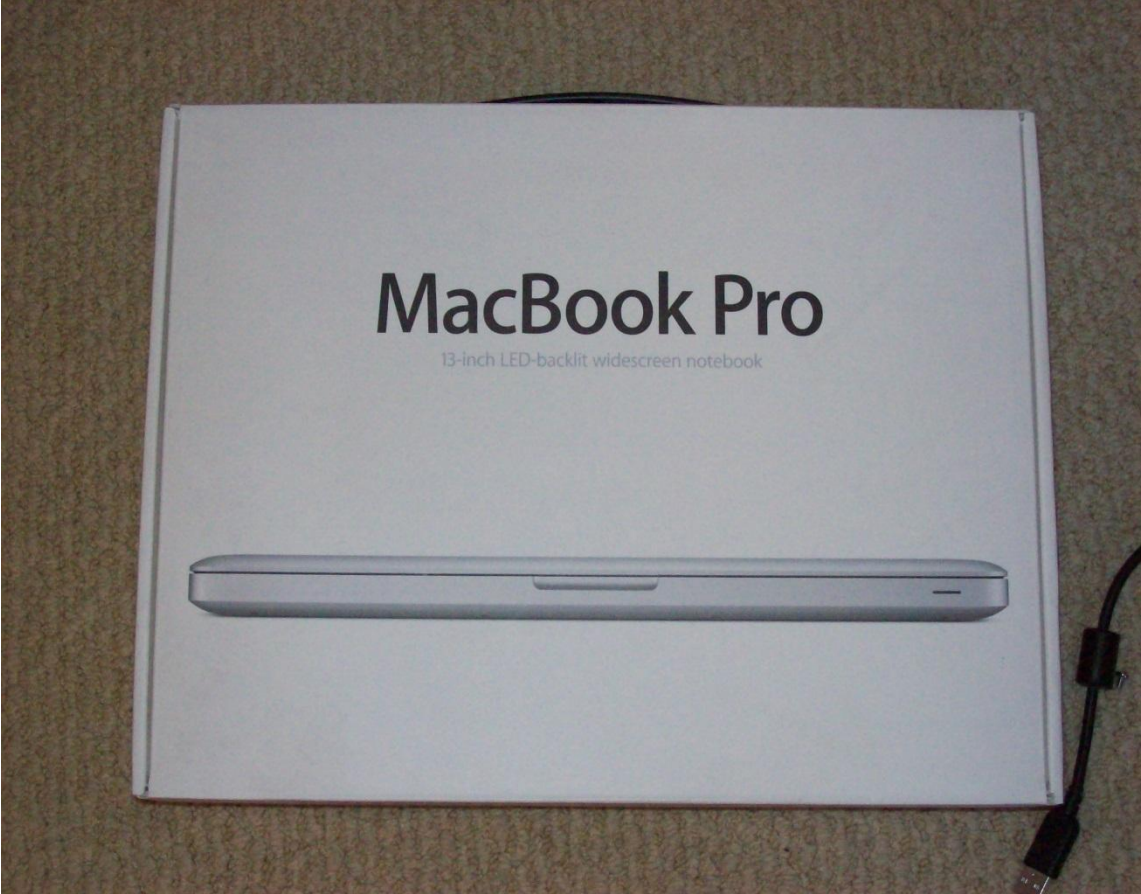
Assembled in China

Other Foreign Items as Marked Thereon



© 2007 Apple Inc. All rights reserved. Apple, the Apple logo, FireWire, Guaranteed, iChat, iLife, iPhoto, iTunes, iWeb, iWork, Mac OS, and SuperDrive are trademarks of Apple Inc., registered in the U.S. and other countries. iMac is a trademark of Apple Inc. and other countries. Other product and company names mentioned herein may be trademarks of their





8 85909 29655 2

(1P) Part No. MB990LL/A

(S) Serial No. W894182566D

Model No. A1274

**MacBook Pro**

2.26GHz i5/2x16GB

AirPort ID: 012508 125A 18

Ethernet ID: 80F 8421FC248

Bluetooth ID: 8026803A2C49

Designed by Apple in California  
1 Infinite Loop Cupertino CA 95014 USA  
Assembled in China  
Other Foreign Items as Marked Thereon













16-004t





16-004t

X





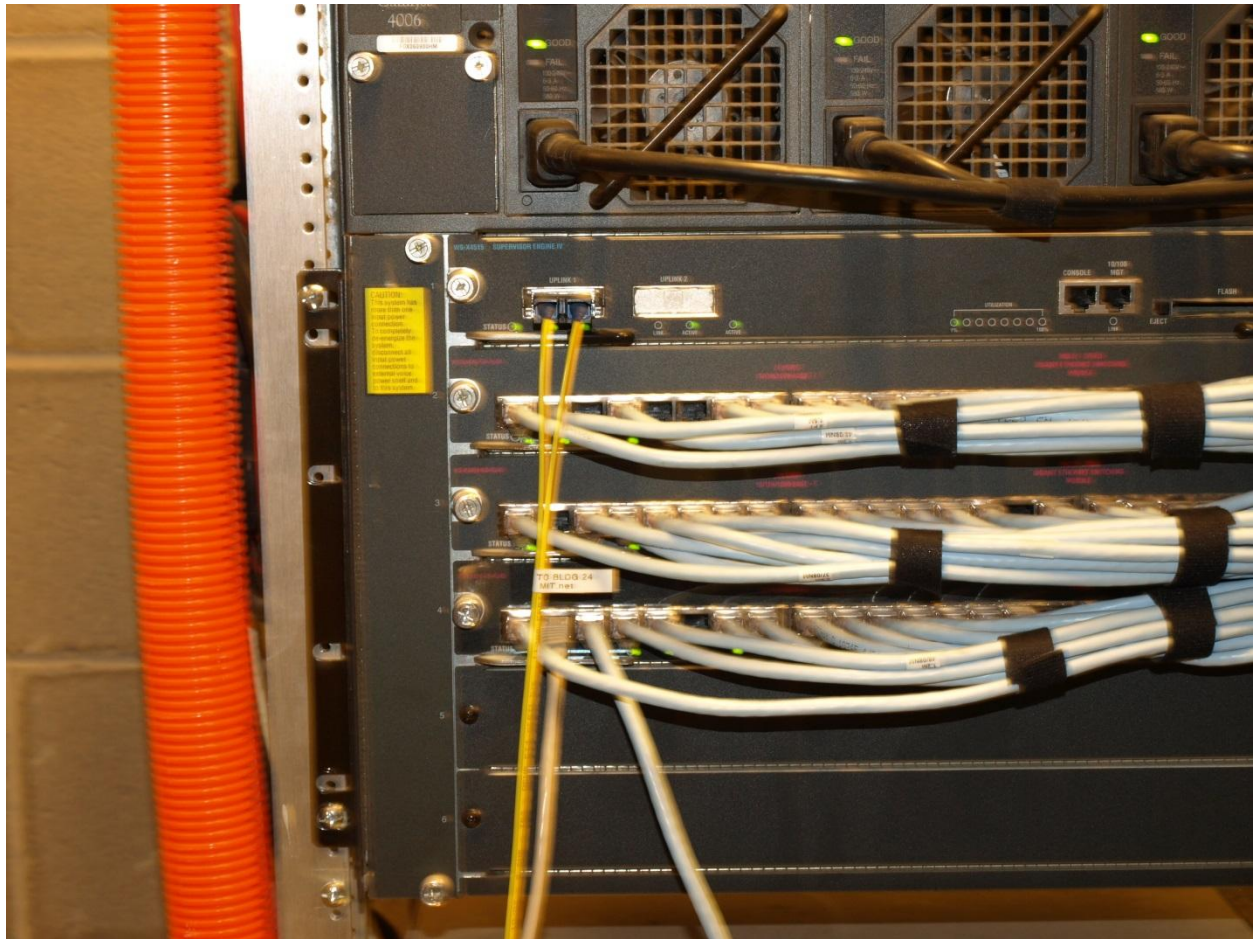






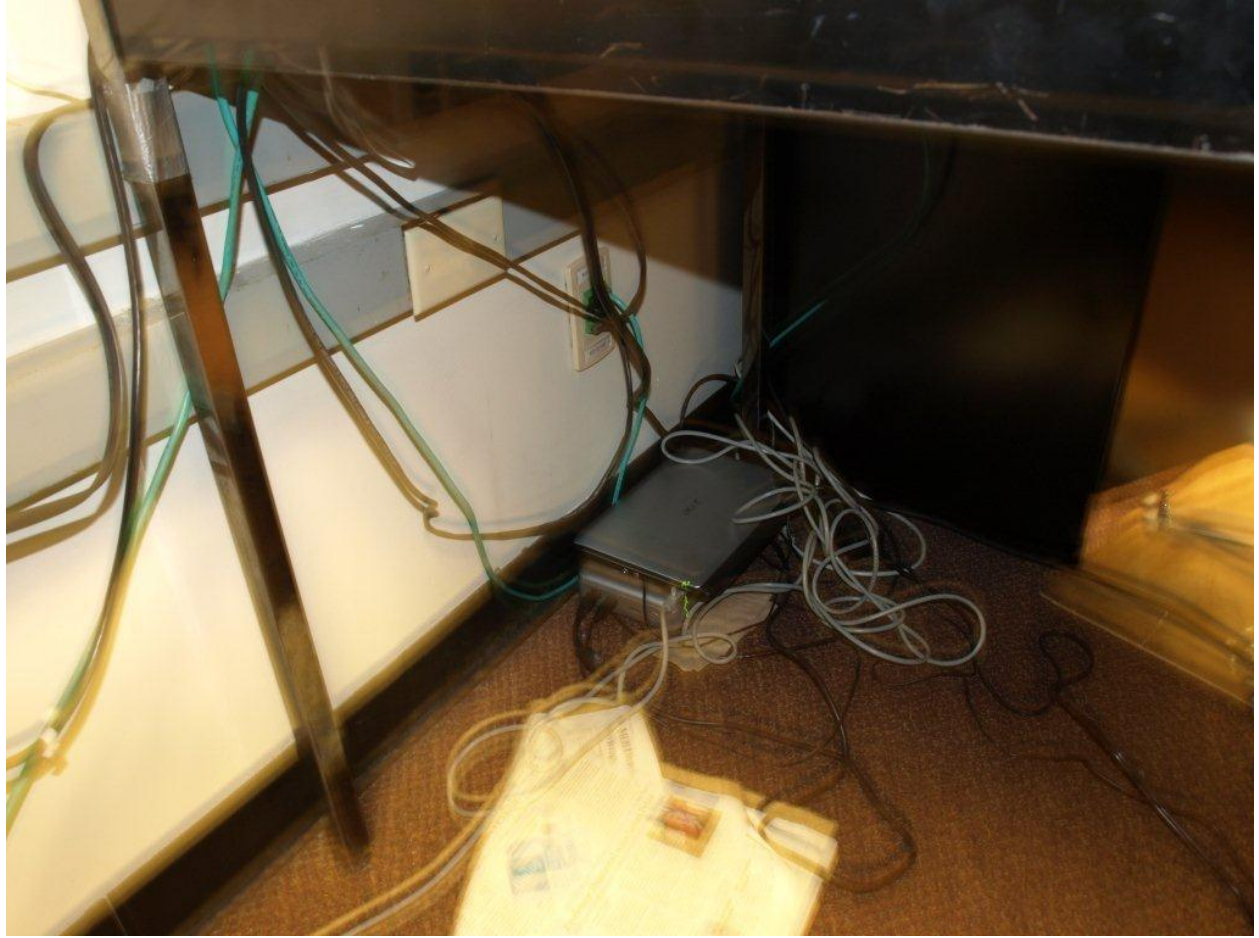








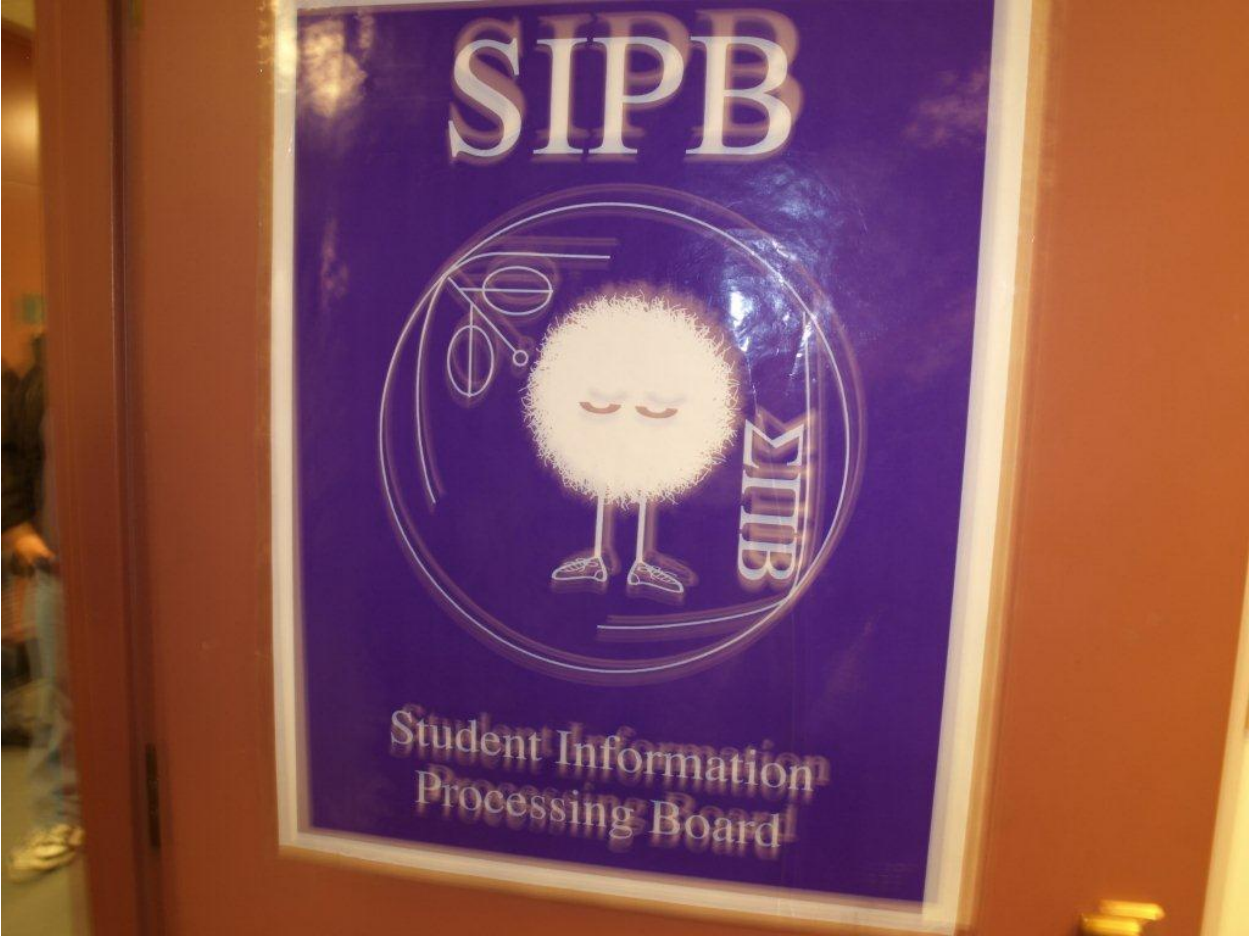


























~~No Picture~~

















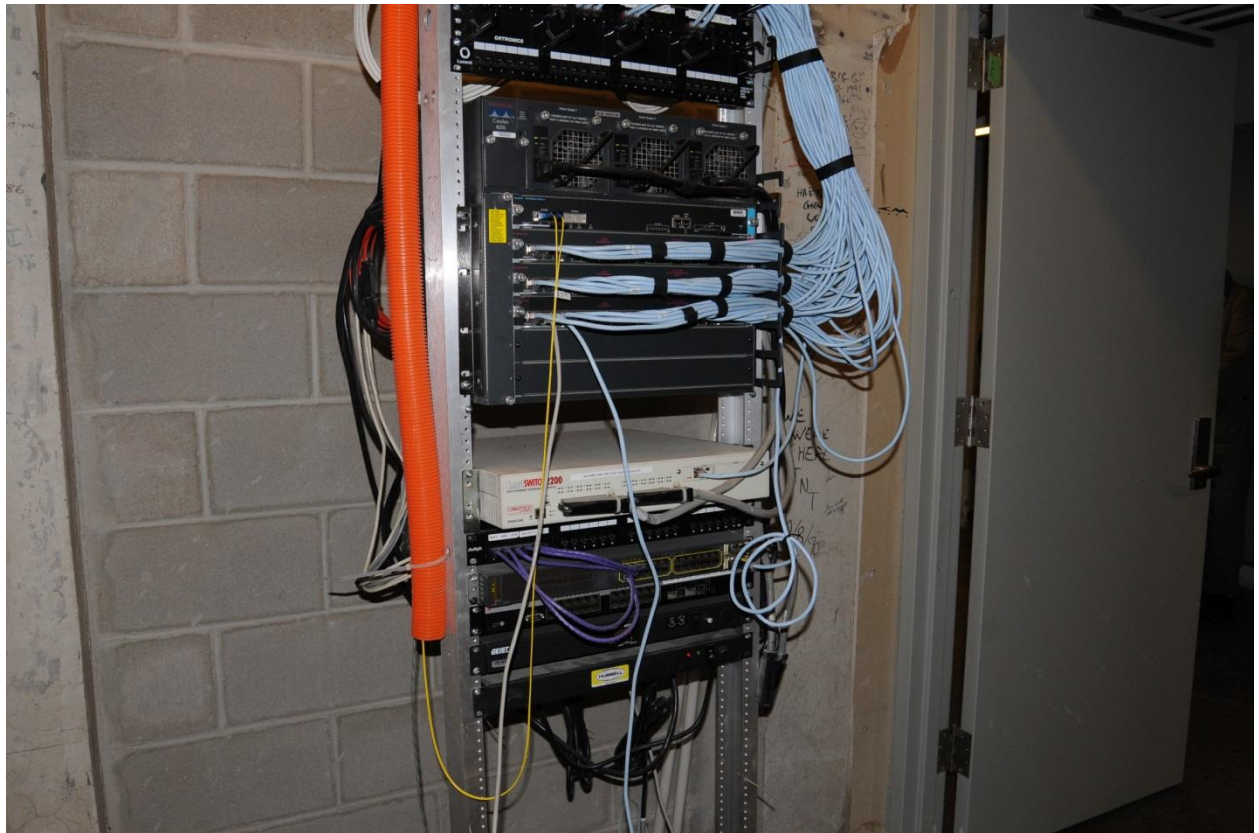




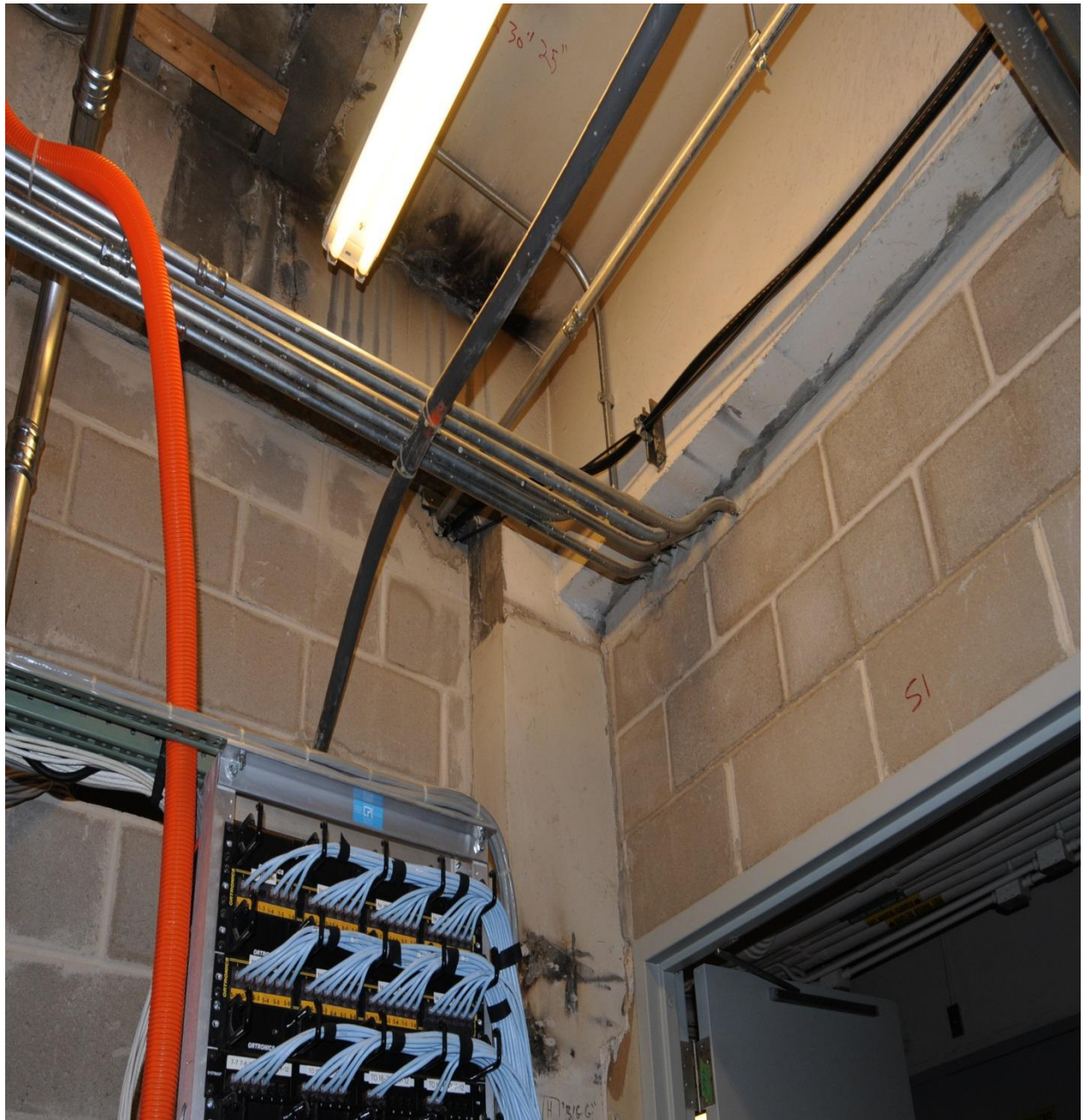


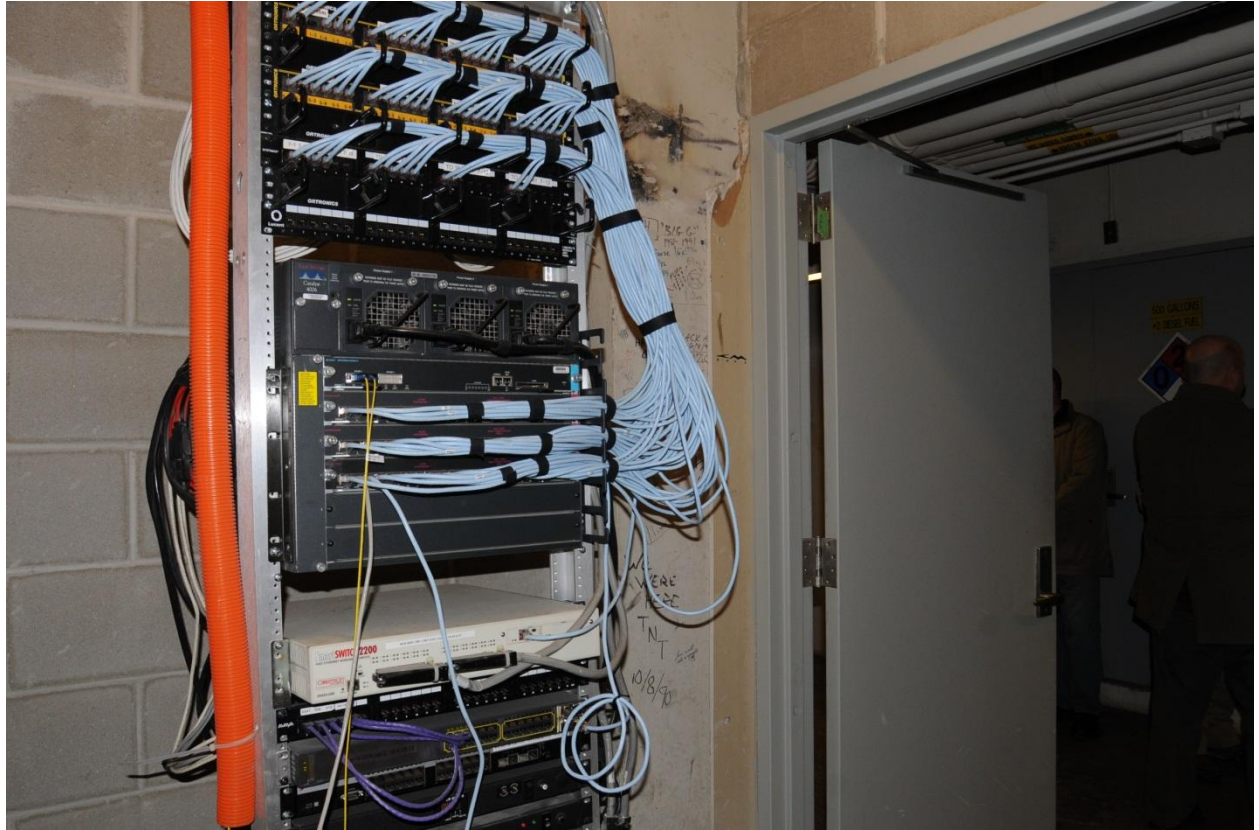














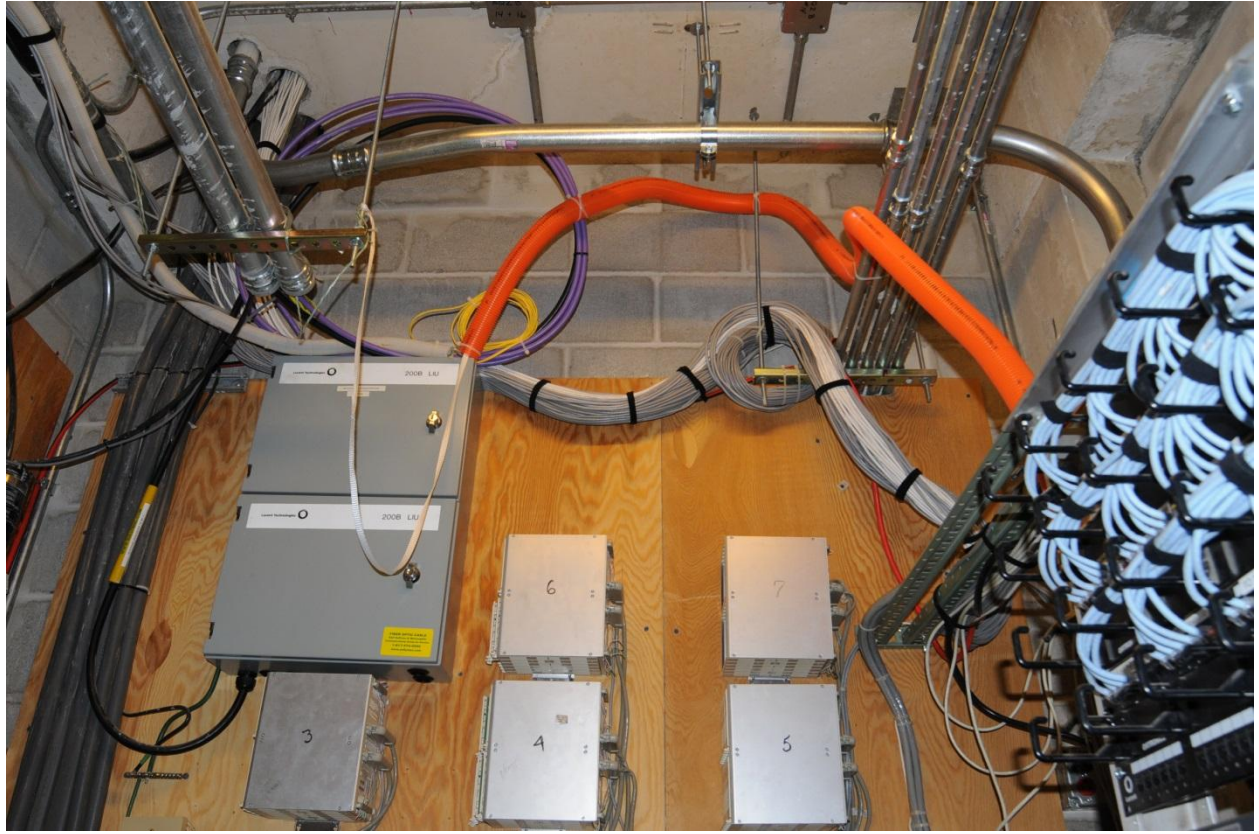




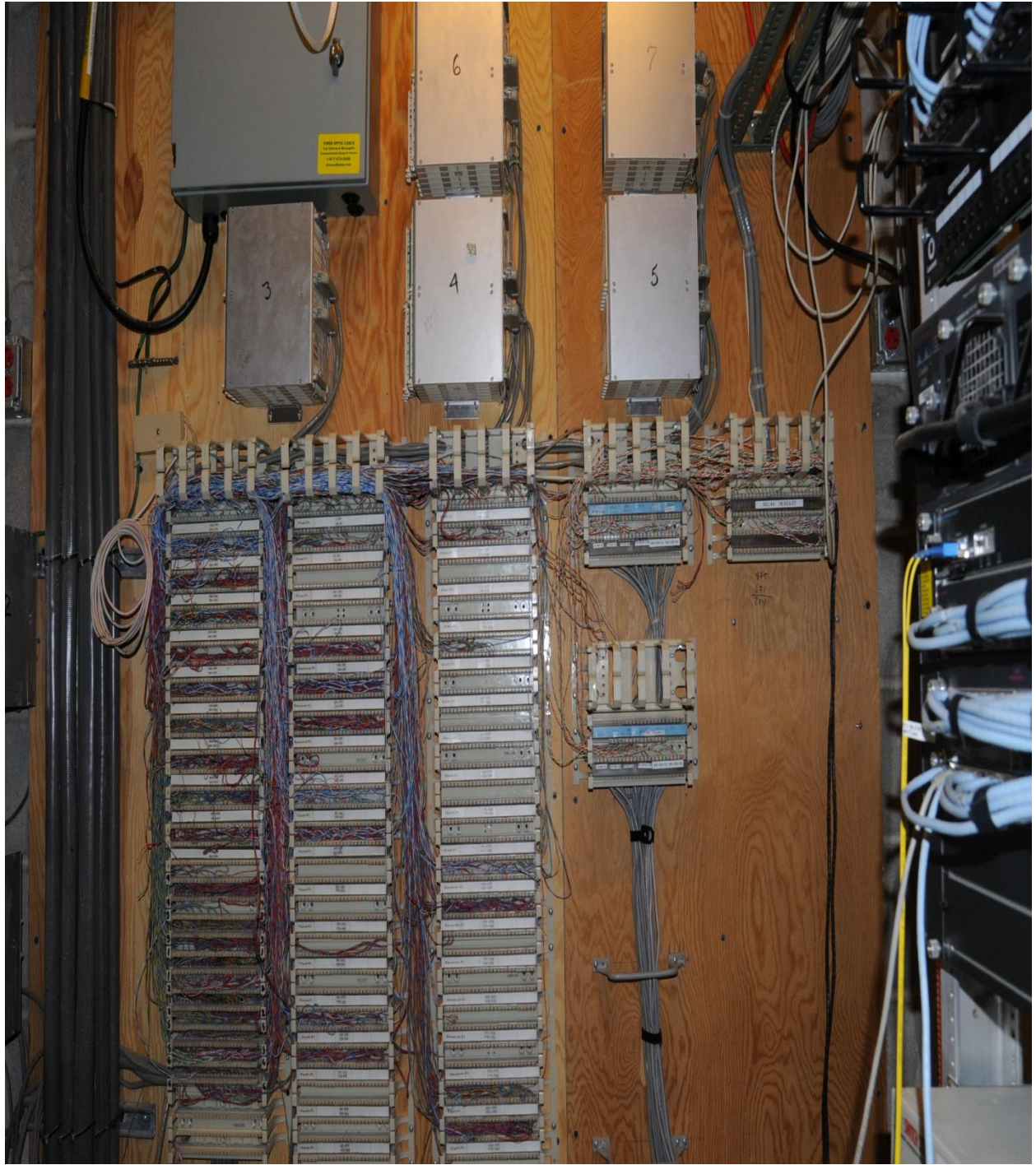










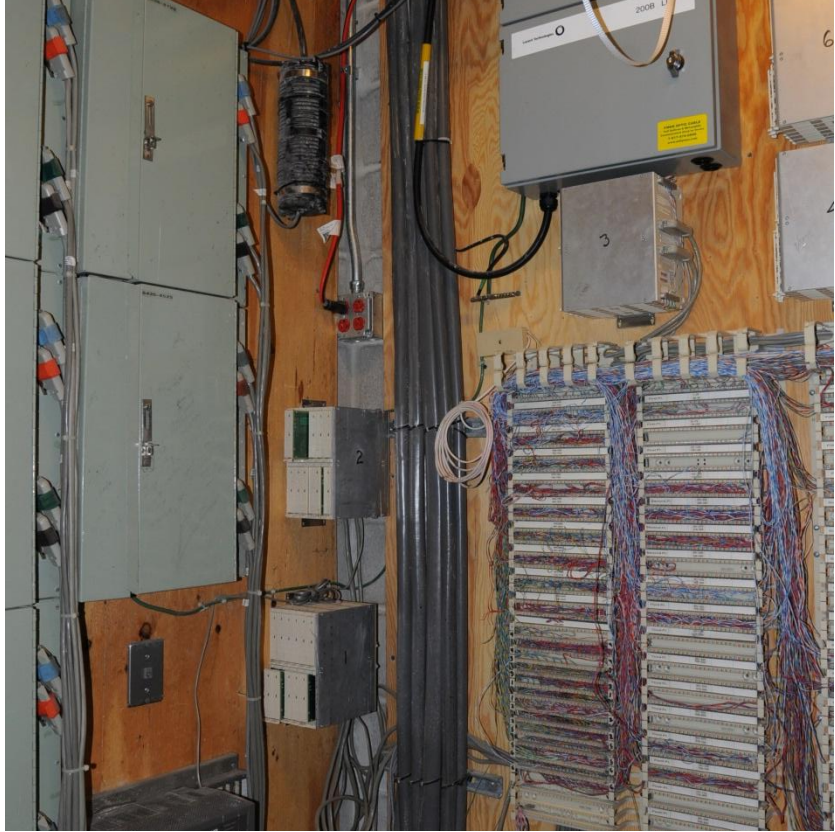
















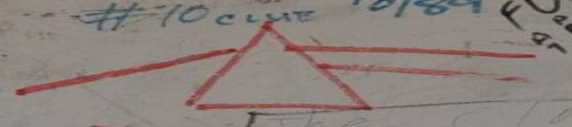






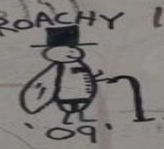


[H] "BIG G"  
1981-1991  
1996  
Blue Goose Inc.  
1/86  
#70 cue 10/89



8x60"

HARTLEY  
CHEWS EP. PZAZIC  
LOOK 9/28/89  
ROACHY 1/86



B A F

SOPHOCCLES

249







2000

LOOK  
9 28 89

ROACHY 1/86  
09 155

BAFL

SOPHOCLES

249

CW  
MM 10  
EAST  
= 08

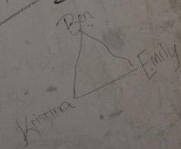
W  
1/2A

VAD  
10/1

no one has  
written on this

WIMY

WE  
WERE



10/8/90

WE  
BEAR  
HERE  
TNT

from in old  
path in 1980s

found

Kimma

Dist.

Emily

Tim

"80  
= EAST  
TST"

12/2/91

10/10/90



The Master

BOYD  
12-5-87  
1:07 AM

THE HACKER WOULD ASK SUCH A STUPID QUESTION

55''

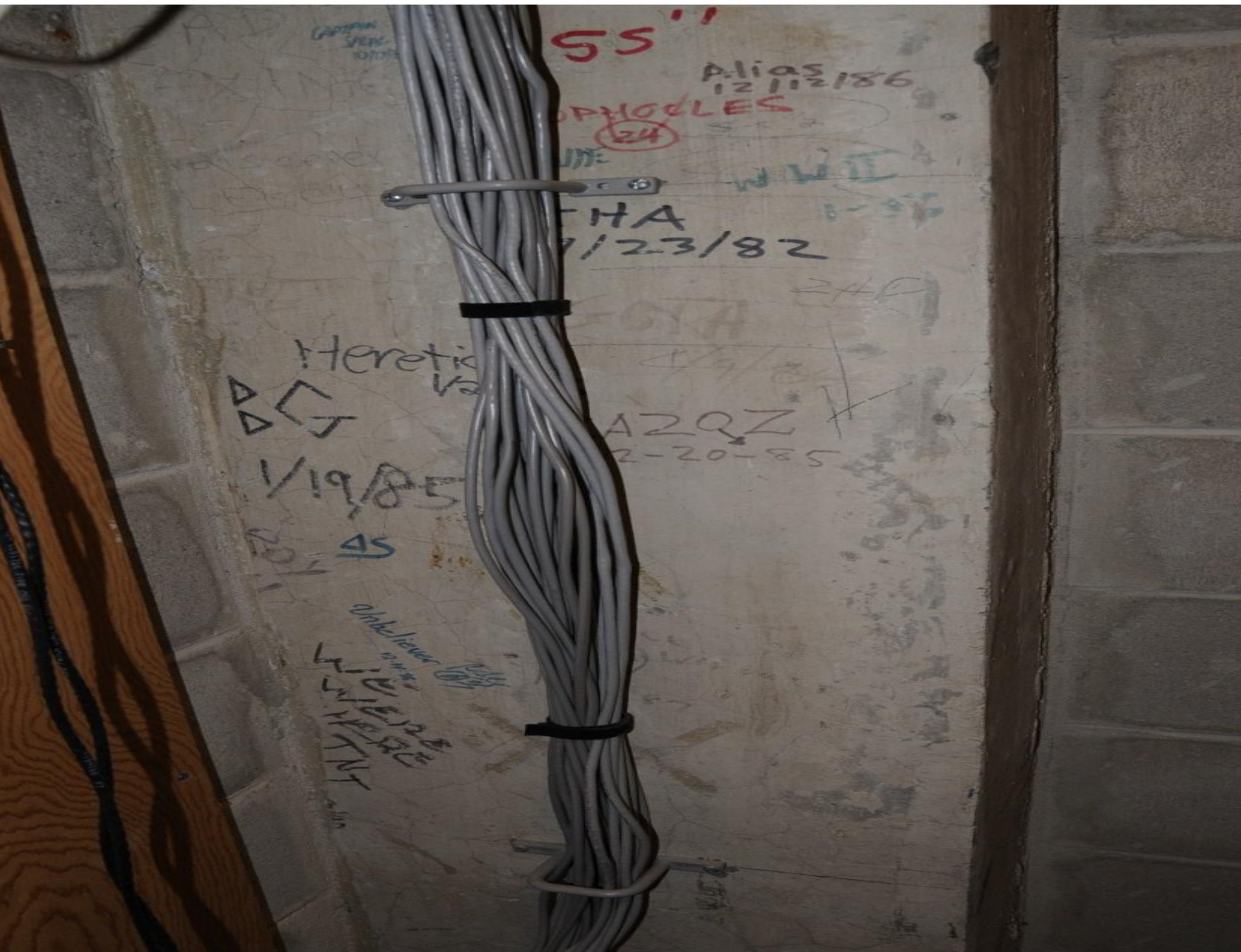
Alias  
12/12/86

PHOONES  
24

JWC

100144 1855027





55''

Alias  
12/12/86

PHODLES

(24)

FHA  
1/23/82

Heretic  
Va

Δ Δ Δ

1/19/85

AS

AZQZ  
2-20-85

Whelover  
WIC  
WIC  
WIC  
WIC  
WIC  
WIC



15  
175  
75 REG LI

16

with  
5/12

BASE

#  
#

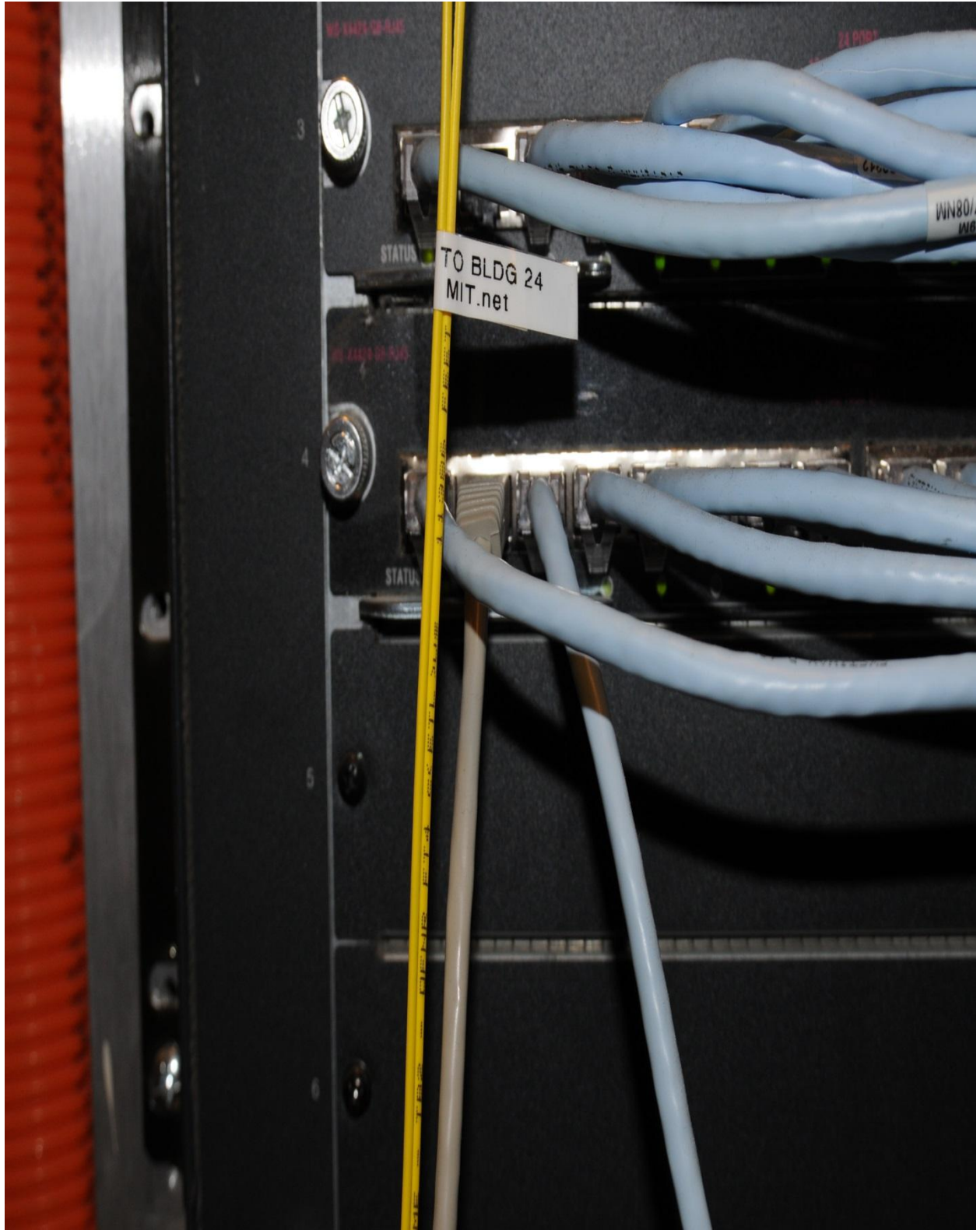


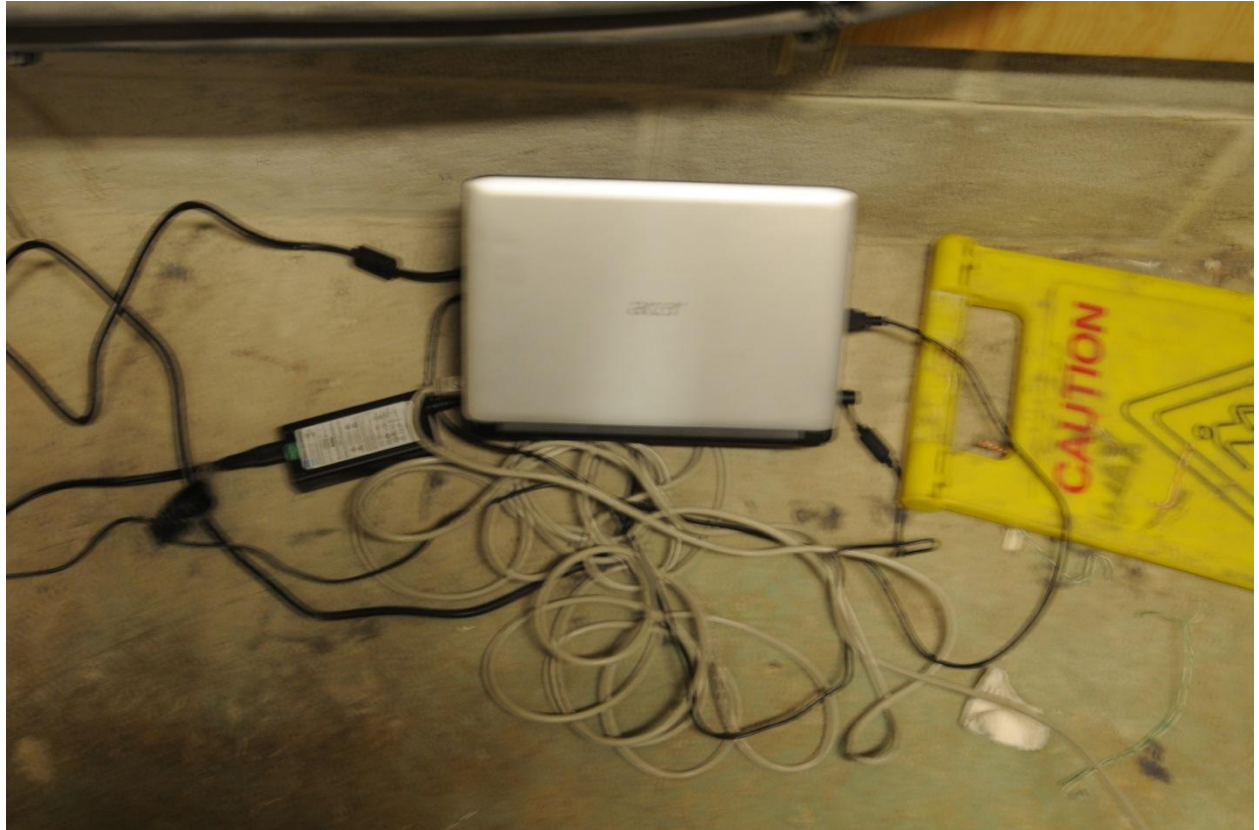




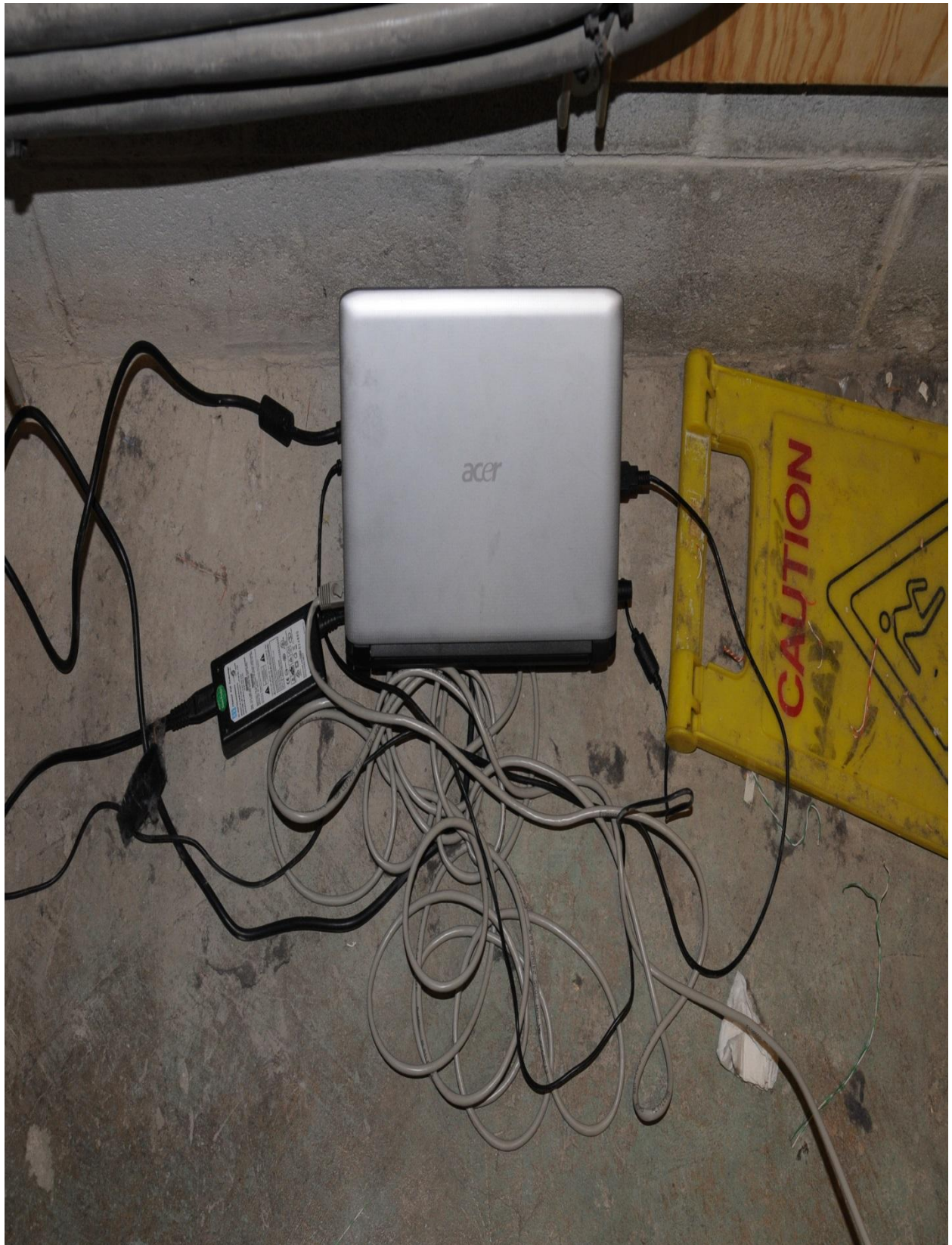


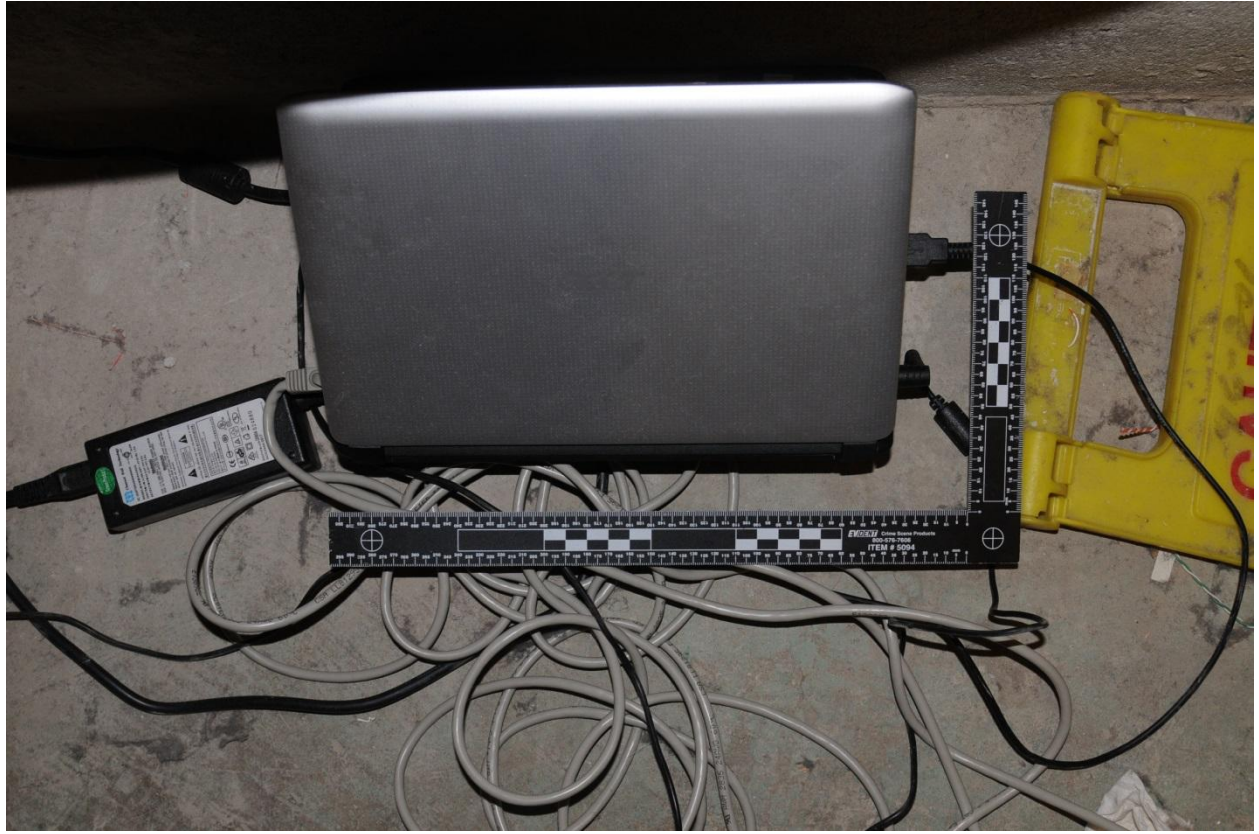






















ADT AP0400100295304DDP101  
SAFETY  
UL LISTED  
V85  
N17908  
R33030

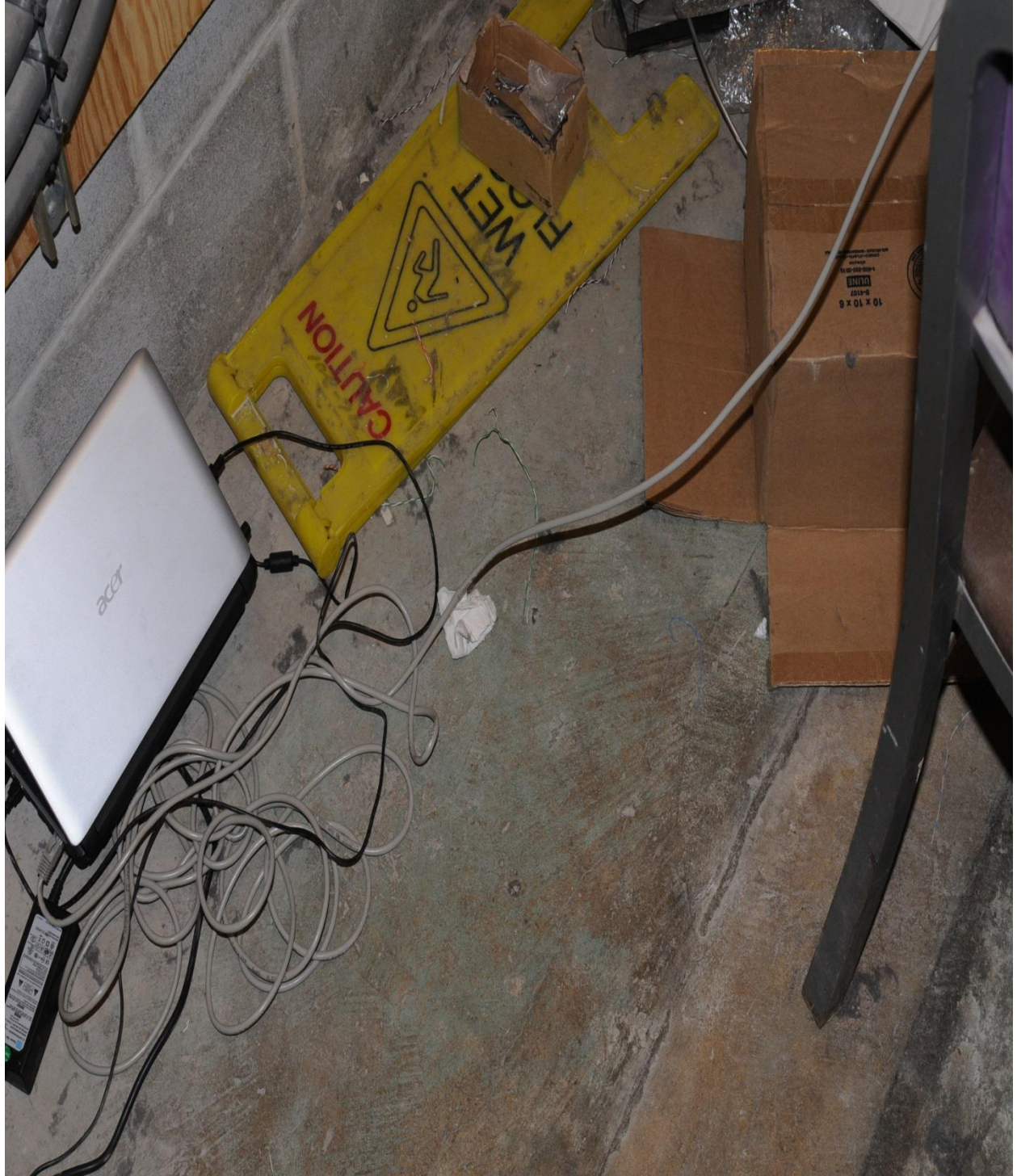
7A 125V



N17908 V85  
APC 100100295304DDPF101  
UL LISTED  
R33030  
V85  
N17908  
APC  
100100295304DDPF101

EVIDENCE Crime Scene Products  
800-576-7606  
ITEM # 5094  
0 5 10 15 20 25 30 35 40 45 50 55 60 65 70 75 80 85 90 95 100 105 110 115 120 125 130 135 140 145 150 155 160 165 170 175 180 185 190 195 200  
0 5 10 15 20 25 30 35 40 45 50 55 60 65 70 75 80 85 90 95 100 105 110 115 120 125 130 135 140 145 150 155 160 165 170 175 180 185 190 195 200





























Model: HD154UI  
SAMSUNG  
Model: HD154UI (1500GB/RS4/32M)  
B/N: 61831-3761-DCVZ2  
SAMSUNG ELECTRONICS CO., LTD.  
151, JONGDAL-RO, YONGIN-CITY, GYANGGI-DO, KOREA

EVIDENT Crime Scene Products  
800-576-7606  
ITEM # 5094



































**Building 16**  
**East Campus**

**Building 8**  
**Main Campus**



KARL TAYLOR COMPTON LABORATORIES





35351 91812  
# 1200333

WRITE NECESSARY INFORMATION ON AREA PROVIDED

PIMA009110011000297



Agency Incident # Item #  
**CAM-PD 11000297**

Property Class

Make Model Year

Location  
/ /

Owner Name

Owner Phone #

PIMA009IT0011000006



Agency	Incident #	Tag #
<b>MIT-PD</b>	<b>11000351</b>	<b>11000351</b>

Property Class

**DIVERTED TO DEPARTMENT**

Make

Model Year

Item Description

**2 POWER CORDS AND NETWORK C**

Location

**EVIDENCE ROOM/2011**

Owner Name

Owner Phone #

M.I.T. POLICE

01/06/2011 05:05:04



PI14009110011000298



Item #

11000298

Item #

11000298

Item #

11000298

Item #

11000298

Item #

11000298

Item #

11000298

Item #

11000298

Item #

11000298

Item #

11000298

Item #

11000298

Item #

11000298

Item #

11000298

Item #

11000298

Item #

11000298

Item #

11000298

Item #

11000298

Item #

11000298

Item #

11000298

Item #

11000298

Item #

11000298

Item #

11000298

Item #

11000298

Item #

11000298

Item #

11000298

Item #

11000298

Item #

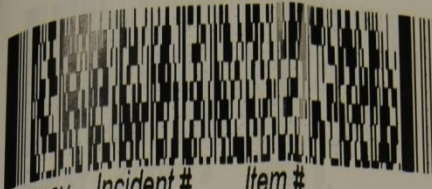
11000298

ORDER NO. EPL

RECYCLE THESE LINES



PIMA009110011000298



<i>Agency</i>	<i>Incident #</i>	<i>Item #</i>
<b>CAM-PD</b>		<b>11000298</b>

*Property Class*

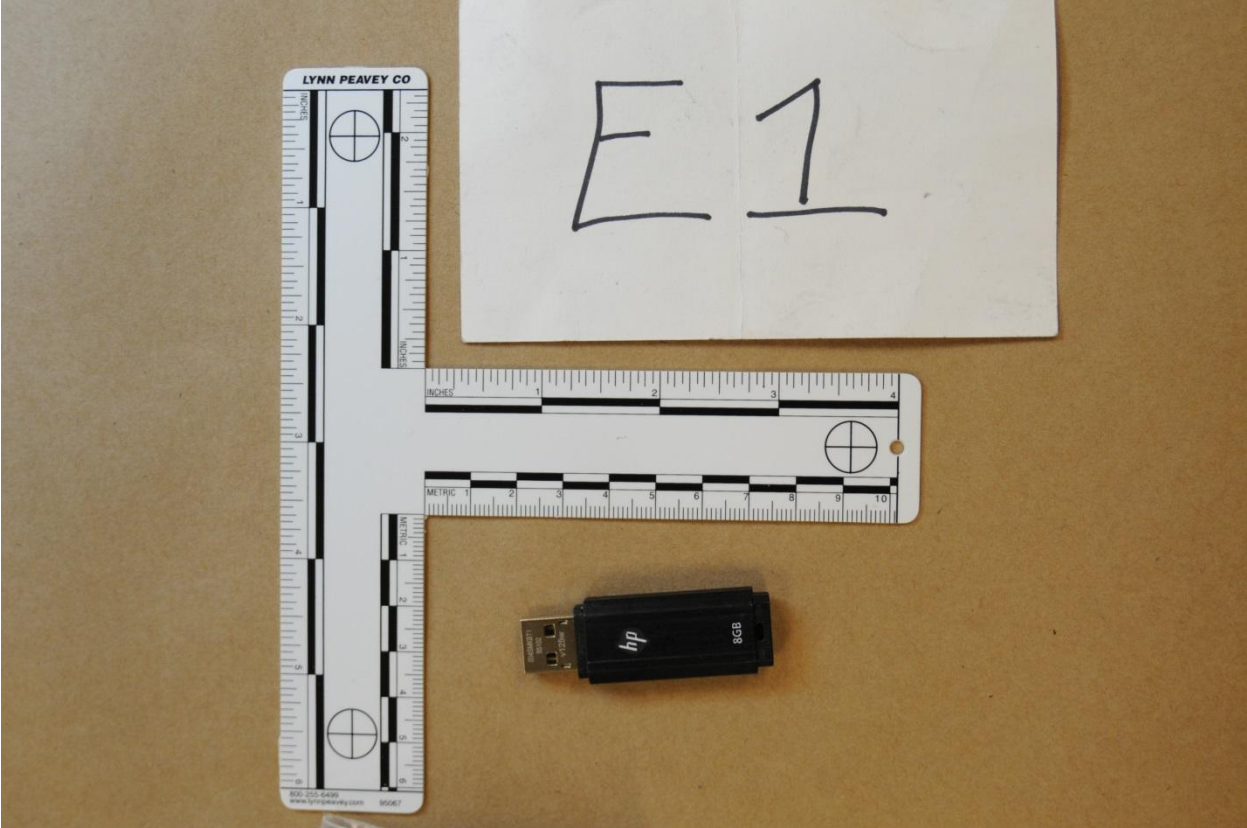
<i>Make</i>	<i>Model</i>	<i>Year</i>
-------------	--------------	-------------

*Location*

11

*Owner Name*

*Owner Phone #*



E1







CS1



CS1



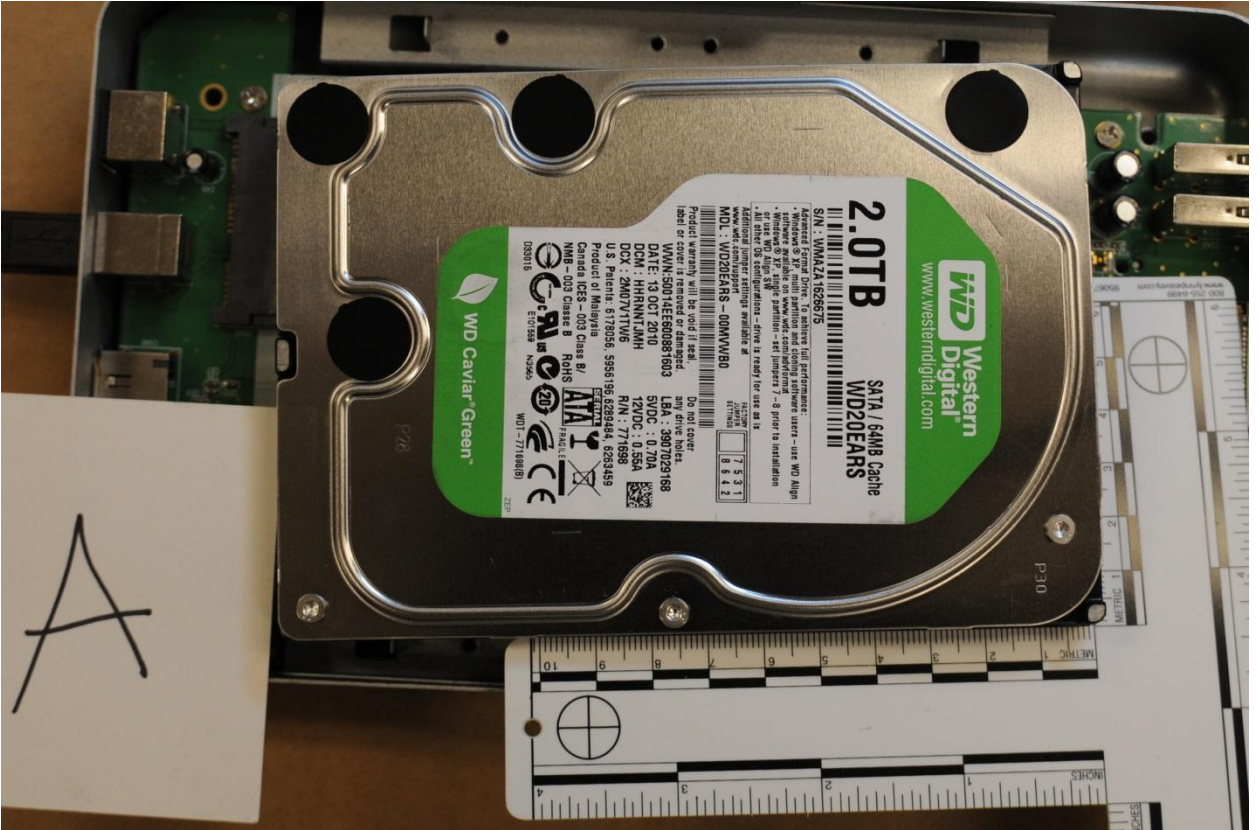
CS2

A

rocketfish







Western Digital  
www.westerndigital.com

2.0TB

SATA / 64MB Cache  
WD20EARS

S/N: J1MMA2A1598575

Agencies: Full performance:  
- Windows XP 4K multi partition and cloning software users - use WD Align  
- Windows XP 4K single partition - set jumper 7 - 8 prior to installation  
- All other OS configurations - drive is ready for use as is  
Additional jumper settings available at  
www.westerndigital.com

MDL: WD20EARS-00MVA90

Product warranty will be void if seal is removed or damaged.

Do not open any drive holes.

DATE: 13 OCT 2010 LBA: 3907029168  
WWW: 50014E600881603 SVDC: 0.70A  
DCM: H1H1M1J1M1H R/N: 717899  
U.S. Patent # 7,117,116 F/N: 717899  
Product of Malaysia P/N: 9233459  
Canada ICS - 003 Class B / RoHS  
MH-B-003 Class B / RoHS  
WD-771488(B) ZP

WD Caviar Green

X



P30

**WD** Western Digital  
www.westerndigital.com

**2.0TB**

SATA / 64MB Cache  
**WD20EARS**



S/N : WMAZA1626675

Advanced Format Drive. To achieve full performance:  
• Windows® XP, multi partition and cloning software users – use WD Align software available on [www.wdc.com/advformat](http://www.wdc.com/advformat)  
• Windows® XP, single partition – set jumpers 7–8 prior to installation or use WD Align SW  
• All other OS configurations – drive is ready for use as is

Additional jumper settings available at [www.wdc.com/support](http://www.wdc.com/support)

FACTORY JUMPER SETTINGS	7 5 3 1
	8 6 4 2

MDL : WD20EARS – 00MVWB0



Product warranty will be void if seal, label or cover is removed or damaged.

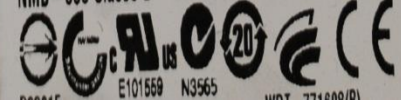
Do not cover any drive holes.  
LBA : 3907029168  
5VDC : 0.70A  
12VDC : 0.55A  
R/N : 771698

WWN:50014EE600881603  
DATE: 13 OCT 2010  
DCM : HHRNNTJMH  
DCX : 2M07V1TW6

U.S. Patents: 6178056, 5956196, 6289484, 6263459

Product of Malaysia

Canada ICES – 003 Class B/  
NMB – 003 Classe B









































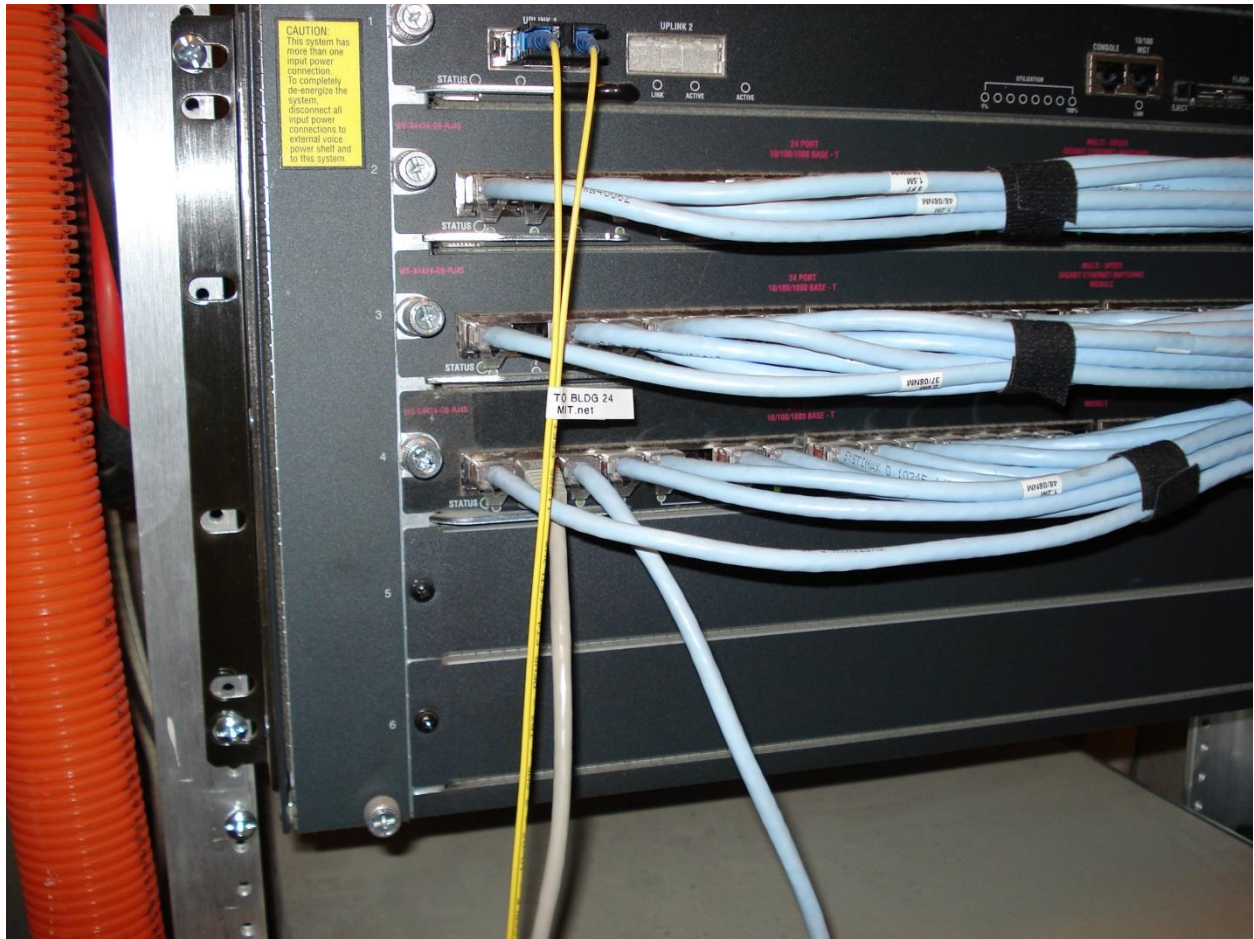




















ASPIRE one



CPU • Intel® Atom™ Processor N450 (1.66GHz, 512KB Cache)

MEMORY • 1 GB Memory

BATTERY • 6 cell Li-ion battery

STORAGE • 160 GB HDD

# ASPIRE one



**CPU** • Intel® Atom™ Processor N450 (1.66GHz, 512KB Cache)

**MEMORY** • 1 GB Memory

**BATTERY** • 6-cell Li-ion battery

**STORAGE** • 160 GB HDD







acer  
Aspire one series  
MODEL NO. (C/S) 5321 / NAV50  
PC RATING 18.25W-18.25W 110V/232.15A

HLZ-NAV50(B) 6021742  
Product of Acer Inc. Acer and logo are registered trademarks of Acer Inc.  
Made in China 4/10/08/17/08/03



ASIA PACIFIC (P) LTD.  
100, SOUTH BRIDGE ROAD, SINGAPORE 059113  
TEL: 65 3387 0000 FAX: 65 3387 0001  
WWW.ACER.COM

ASIA PACIFIC (P) LTD.  
100, SOUTH BRIDGE ROAD, SINGAPORE 059113  
TEL: 65 3387 0000 FAX: 65 3387 0001  
WWW.ACER.COM

CC4500L.P126010

Aspire one 5321-2788 MFG Date: 1991  
S/N LUSAX0D0010011001E1601  
SNID : 00106556616

Windows® 7 Starter SNPC OA  
Acer Group  
CO.7S201.061  
00190-484-743-663  
Product Key: J2MK6-4MPJR-PP9P3-BCRWG-KVMHC  
Label not to be sold separately  
Microsoft  
E280 Microsoft Corporation  
X15-53817

L - LU.SAX0D.001  
Reconditioned  
LUSAX0D0010011001E1601



L - LU.SAX0D.001



Reconditioned

LU.SAX0D0010011001E1601





Aspire one 532h-2789

MFG Date: 1001



S/N:LUSAX0D0010011001E1601



SNID : 00106556616

Gene Host  
ghost on ghost-laptop

Password: |

Leave Message

Switch User

Cancel

Unlock





ghost-laptop



**Gene Host**  
Currently logged in

Log in as ghost

Other...













The logo features a stylized fish icon above the word "rocketfish". The fish is depicted with a curved body and a small eye. The word "rocketfish" is written in a bold, lowercase, sans-serif font. A horizontal line extends from the left side of the 'r' and underlines the 'fish' portion of the word. A trademark symbol (TM) is located at the end of the word.

**rocketfish™**

**RF 3.5" SATA HD Enclosure Kit**

RF-AHD35

Made in Taiwan







WD Digital  
www.westerndigital.com

# 2.0TB

SATA / 64MB Cache  
WD20EARS

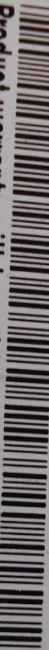
S/N : WMAZA1626675

Advanced Format Drive. To achieve full performance:

- Windows® XP, multi partition and cloning software users – use WD Align software available on [www.wdc.com/advformat](http://www.wdc.com/advformat)
- Windows® XP, single partition – set Jumpers 7 – 8 prior to installation or use WD Align SW
- All other OS configurations – drive is ready for use as is

Additional jumper settings available at [www.wdc.com/support](http://www.wdc.com/support)

MDL : WD20EARS – 00MWB0



Product warranty will be void if seal, label or cover is removed or damaged.

WWN:50014EE600881603

DATE: 13 OCT 2010

DCM : HHRNNTJMH

DCX : 2M07V1TW6

U.S. Patents: 6178056, 5956196, 6289484, 6263459

Product of Malaysia

Canada ICES – 003 Class B/

NMB – 003 Classe B

RoHS

ATA

D33016

E101559

N3565

Do not cover any drive holes.

LBA : 3907029168

5VDC : 0.70A

12VDC : 0.55A

R/N : 771698



FACTORY JUMPER SETTINGS

<input type="checkbox"/>	7	5	3	1
<input type="checkbox"/>	8	6	4	2





Western  
Digital®

www.westerndigital.com

**2.0TB**

SATA / 64MB Cache  
**WD20EARS**



S/N : WMAZA1626675

Advanced Format Drive. To achieve full performance:

- Windows® XP, multi partition and cloning software users – use WD A software available on [www.wdc.com/advformat](http://www.wdc.com/advformat)
- Windows® XP, single partition – set jumpers 7 – 8 prior to installation or use WD Align SW



# 2.0TB

SATA / 64MB Cache  
WD20EARS

S/N : WMMAZA1626675

Advanced Format Drive. To achieve full performance:

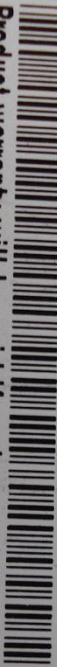
- Windows® XP, multi partition and cloning software users – use WD Align software available on [www.wdc.com/adv/format](http://www.wdc.com/adv/format)
- Windows® XP, single partition – set Jumpers 7 – 8 prior to installation or use WD Align SW
- All other OS configurations – drive is ready for use as is

Additional jumper settings available at [www.wdc.com/support](http://www.wdc.com/support)

MDL : WD20EARS – 00MWWB0

FACTORY  
JUMPER  
SETTINGS

7	5	3	1
8	6	4	2



Product warranty will be void if seal, label or cover is removed or damaged.

Do not cover any drive holes.

WWN:50014EE600881603

LBA : 3907029168

DATE: 13 OCT 2010

DCM : HHRNNTJMH

5VDC : 0.70A

DCX : 2M07V1TW6

12VDC : 0.55A

U.S. Patents: 6178056, 5956196, 6289484, 6263459

Product of Malaysia

Canada ICES – 003 Class B/

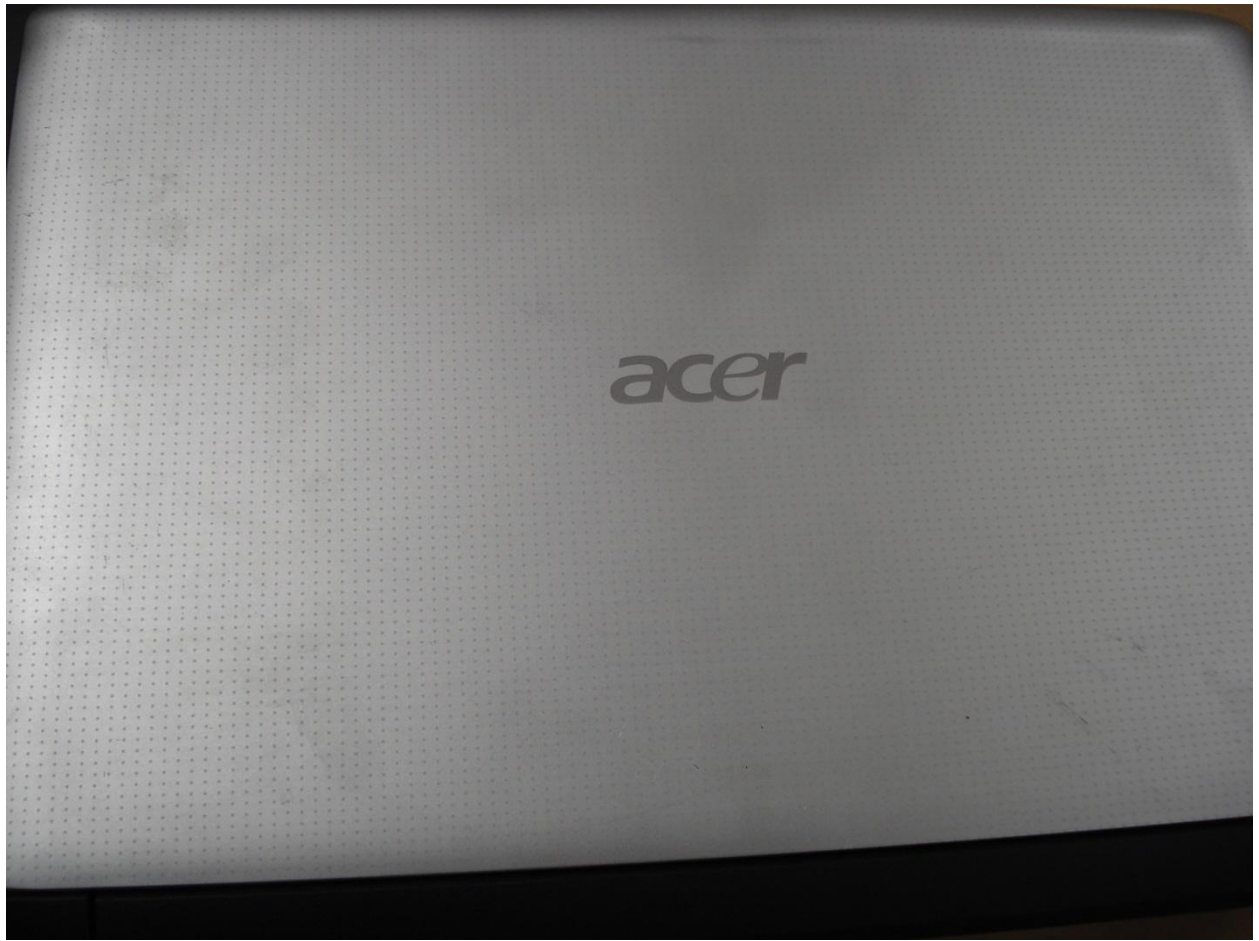
NMB – 003 Classe B RoHS



WDT – 771698(B)

D33015

ZB



acer 便携式计算机/筆記型電腦 MMC  
 Aspire one series  
 MODEL NO. (型号/型號): NAV50  
 DC RATING (直流额定/直流標定): 19V==2,15A


















Product of Acer Inc., Acer and logo are registered trademarks of Acer Inc.  
 Made in China 中國製造/中國製造

This device contains WLAN module Athlon AR5985




Contains FCC ID: HLZ-AR5985  
 COPTEL:RCPATAR09-0168  
 CMI ID: 200903217  
 IC: 1754-AR5985  
 CNC: C-7152  
 Complies with IDA Standards  
 DAO2734  
 TA-20081289 APPROVED  
 10066/POSTEL/2009 1520  
 CCAE0BLP1560T0  
 0223-09-3987  
 ANATEL 0310752801006871

ATH-AR5985  
 003WWA081036  
 003CZA061037  
 D081038003  
 技術基準認証済み  
 の無線装置を内蔵

L - LU.SAX0D.001



Reconditioned  
 LUSAX0D0010011001E1601





L-LU.SAX0D.001



Reconditioned

LUSAX0D0010011001E1601



acer

便携式计算机/笔记本电脑

MMC

Aspire one series

MODEL NO. (型号/型号): NAV50

DC RATING (额定电压/额定电压): 19V $\sqrt{2}$ , 1.5A



CONFORMS TO  
ROHS 2.0  
REACH  
REstriction of  
Use of Hazardous  
Substances



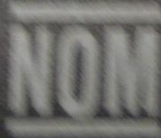
Intertek  
S000004



リサイクル



NE81



N214



HLZ-NAV50(B)



R53142



Product of Acer Inc., Acer and logo are registered trademarks of Acer Inc.

Made in China 中国 1983

便携式计算机/筆記型電腦

MMC

Aspire one series

MODEL NO. (型号/型號): NAV50

DC RATING (直流额定/直流額定): 19V $\overline{=}$ 2,15A

CONFORMS TO  
UL STD. 60950-1  
AND  
CAN STD.  
60950-1



Intertek  
3086904



リサイクル

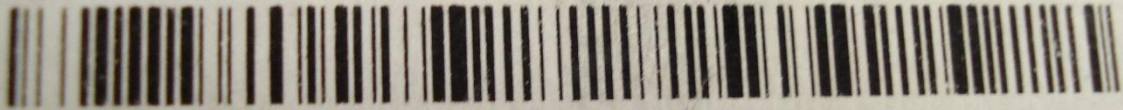


ME61

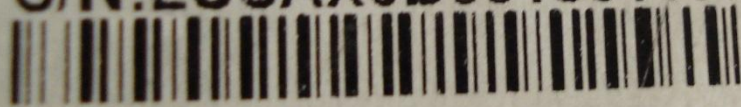


Aspire one 532h-2789

MFG Date: 1001



S/N:LUSAX0D0010011001E1601



SNID : 00106556616













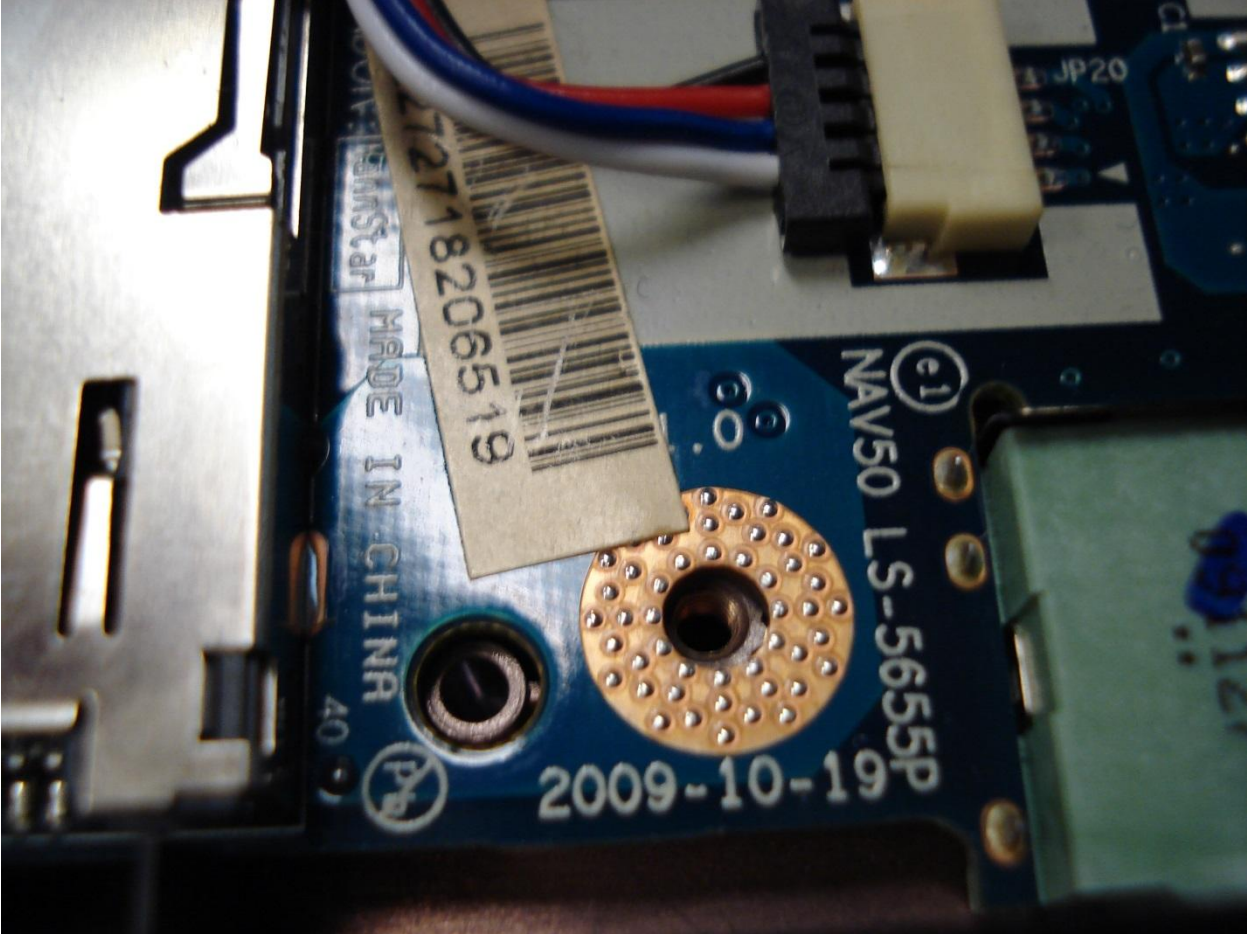
MAC: 904CE5A0C754

T77H121.01 LF E600003218-02L2

MADE IN CHINA

DYNAMIC DO-U0

E150630 94U-0 0345 93 1-2



72718206519

MADE IN CHINA

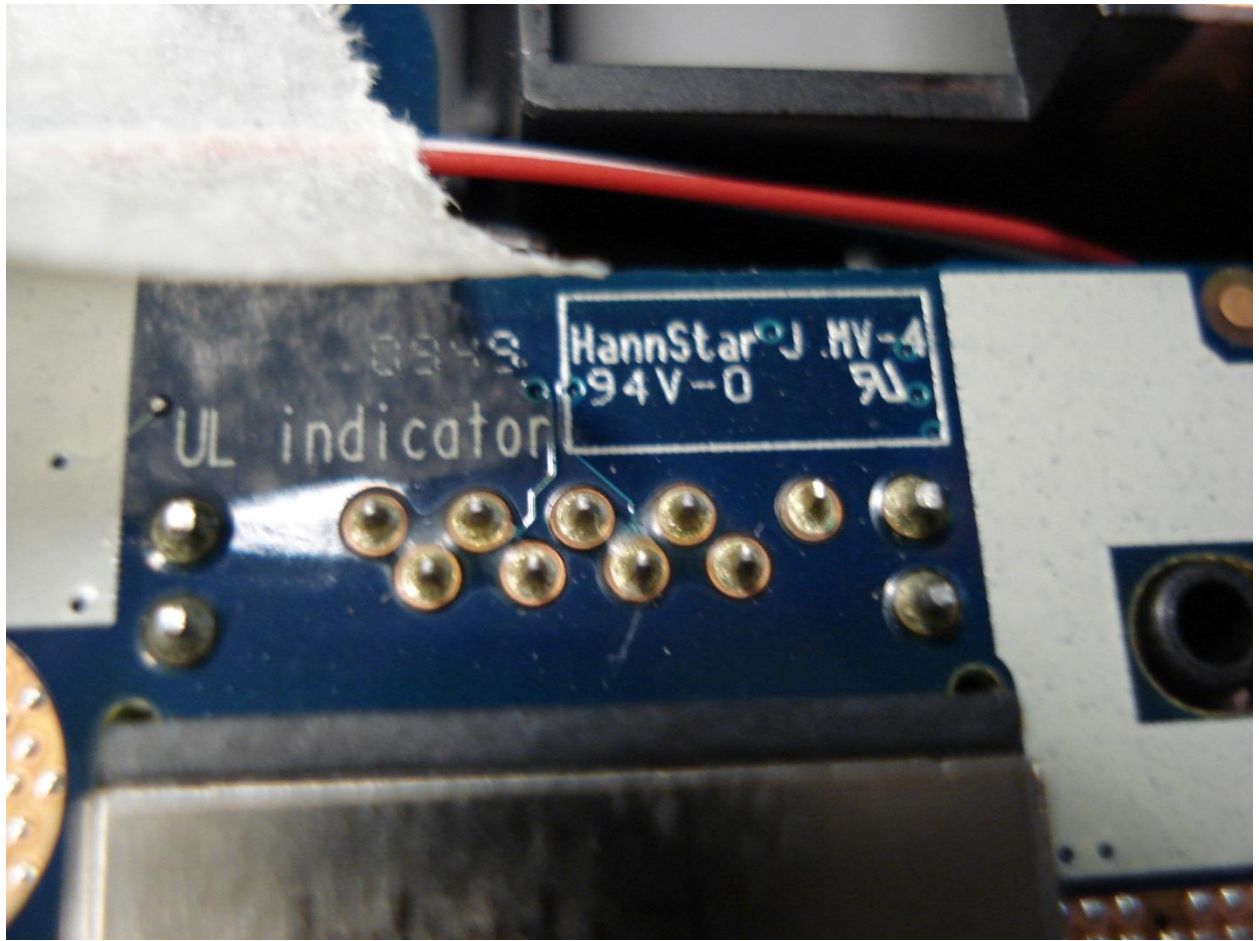
NAV50 LS-5655P

2009-10-19

Pb

JP20







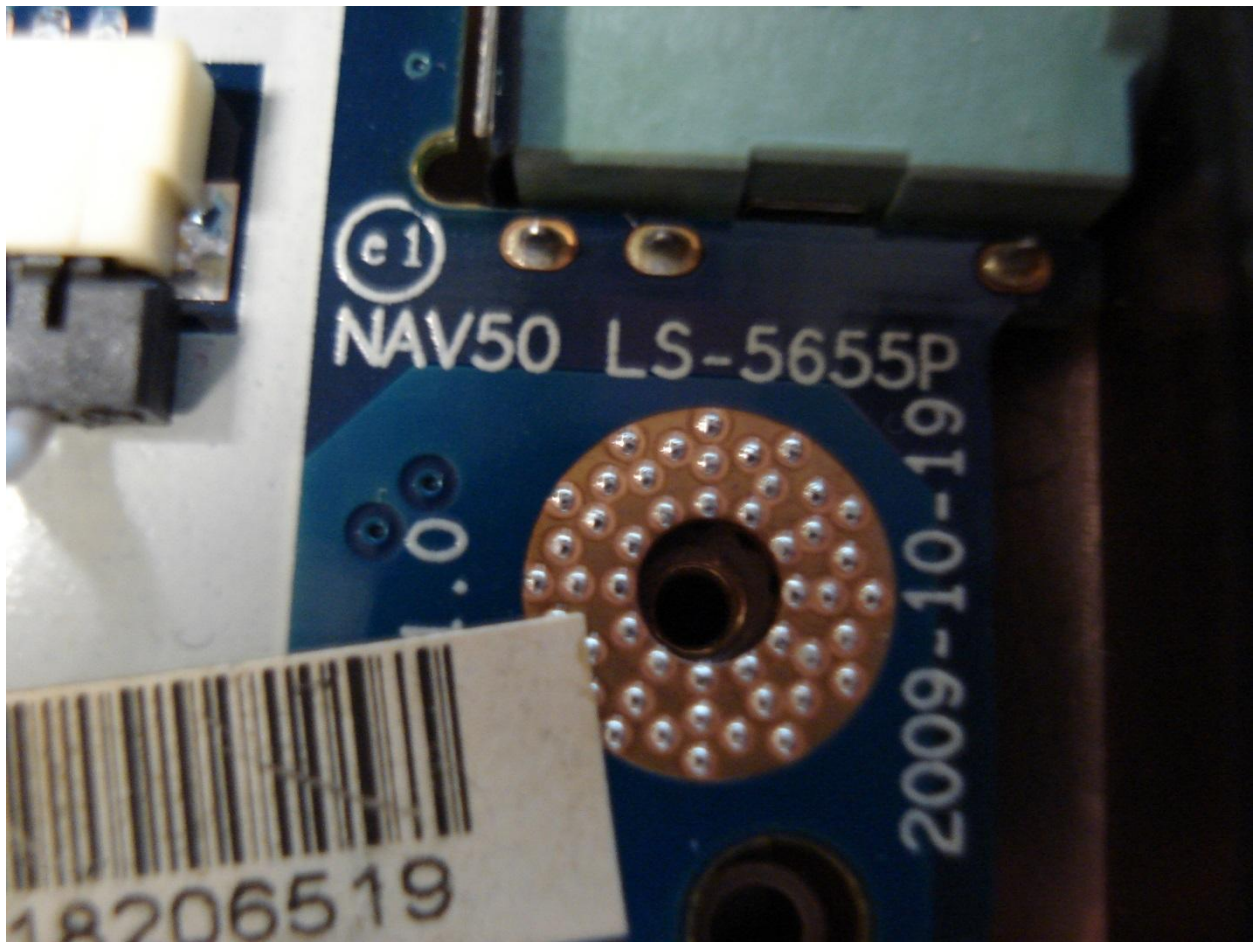
HannStar

MADE IN CHINA

2009-10-19



40



©1

NAV50 LS-5655P

2009-10-19

18206519



NAV50 LS-565AP

Rev: 1.0

2009-10-20

Made In China



D14

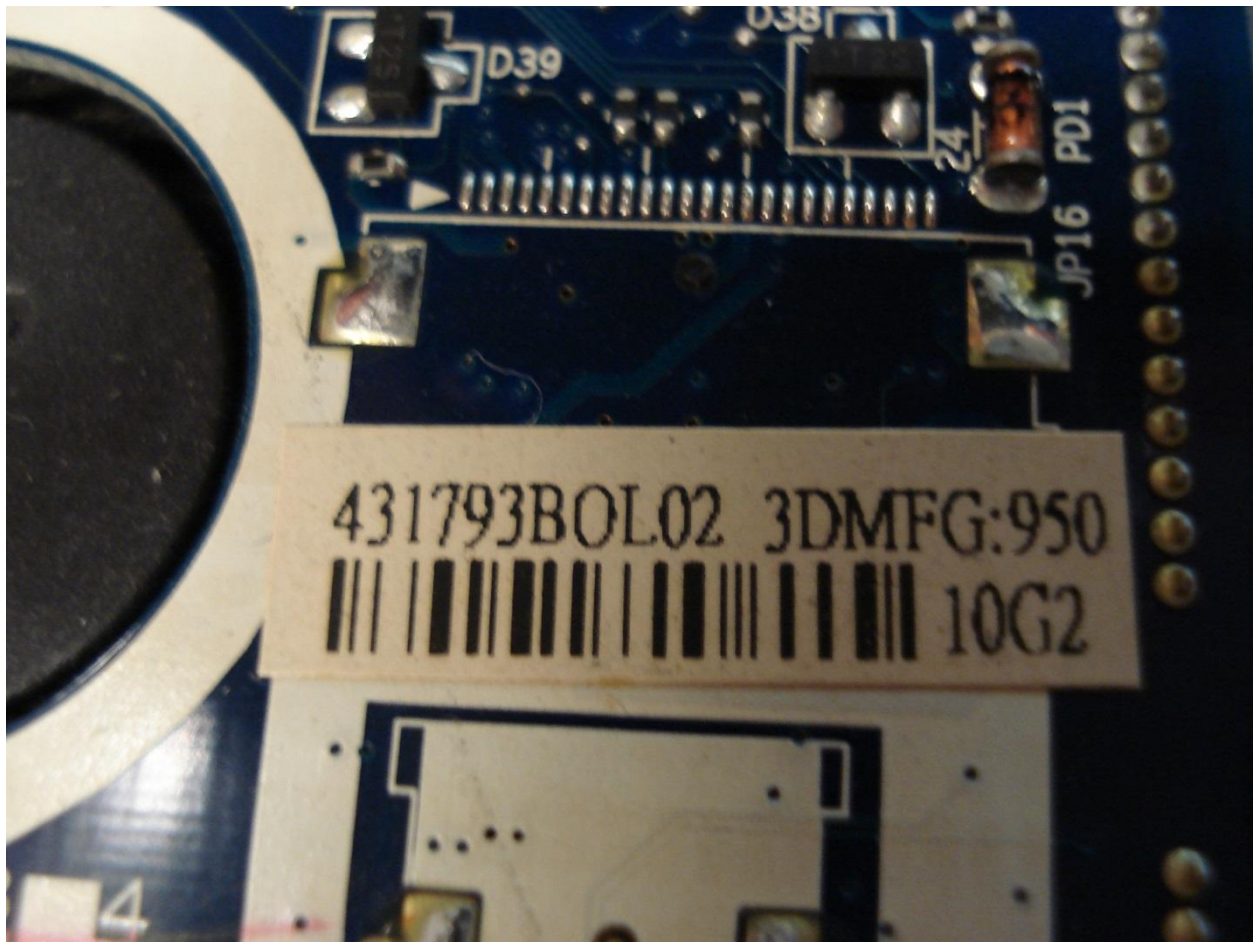
©1 NAV50 LS-565AP

Rev: 1.0

2009-10-20

Made In China





431793BOL02 3DMFG:950



10G2





455N94B0L01D2  
LS-5655P 3D951

R1343

C489  
C486

R402

L27  
R405  
D26

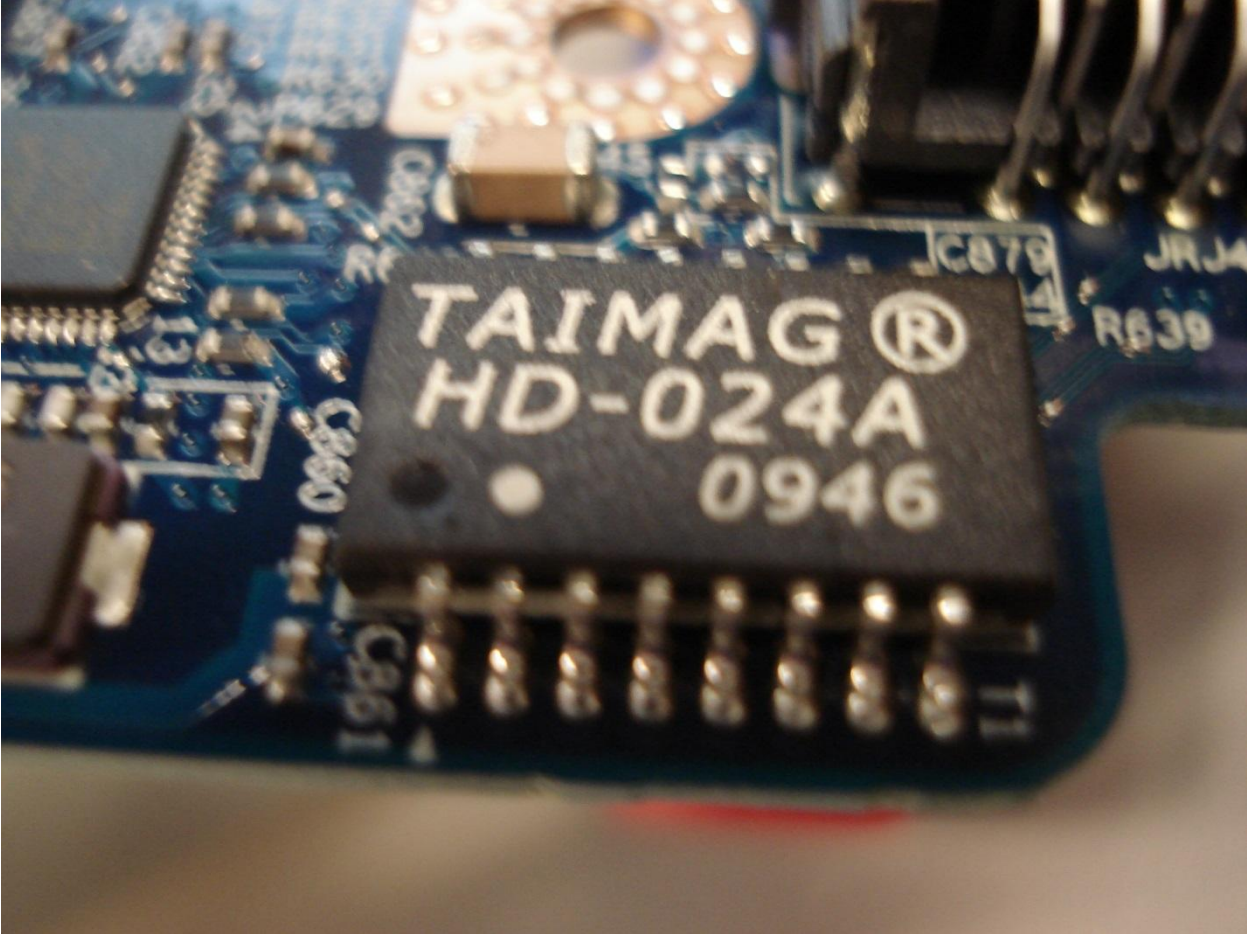
R1

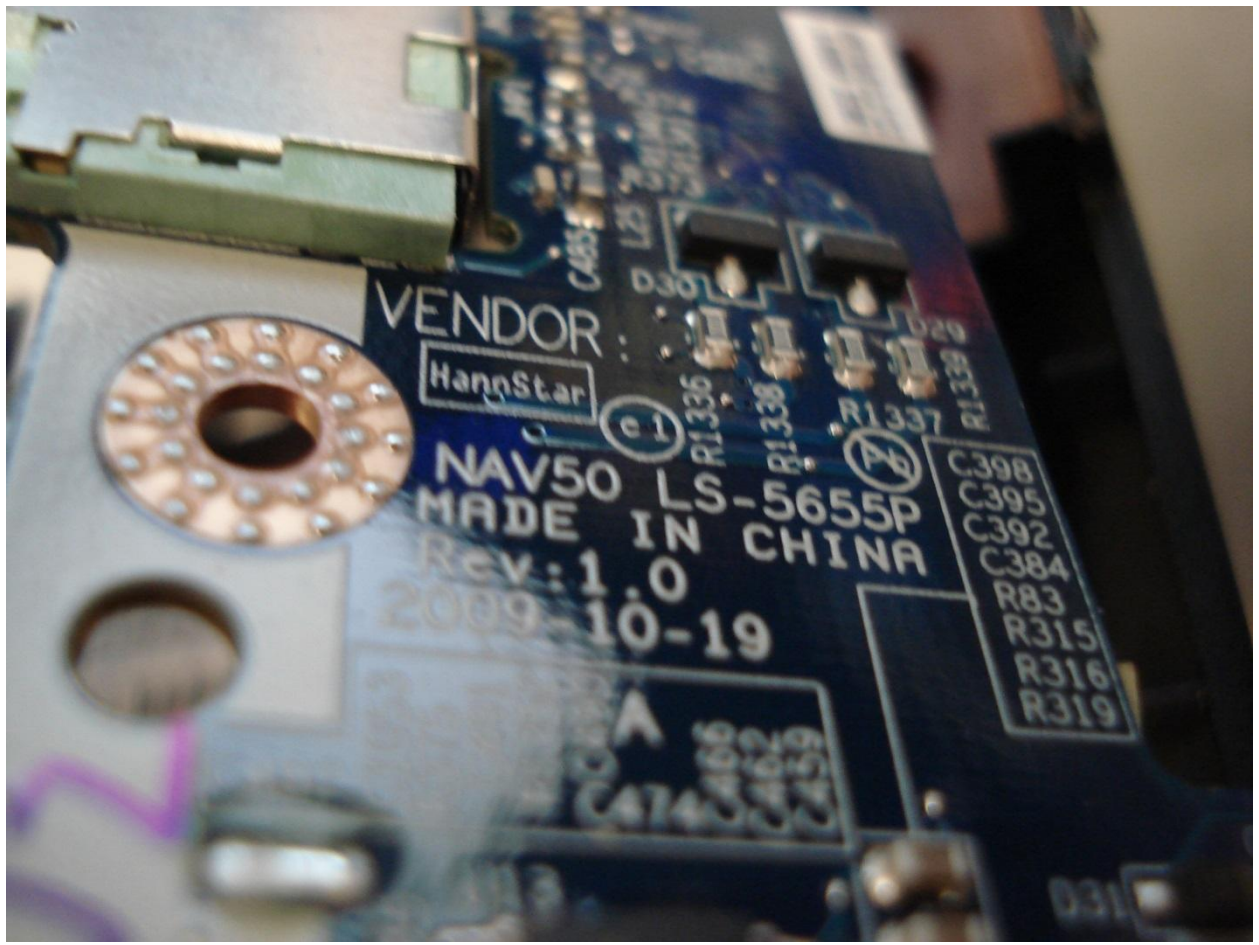
R374

R340

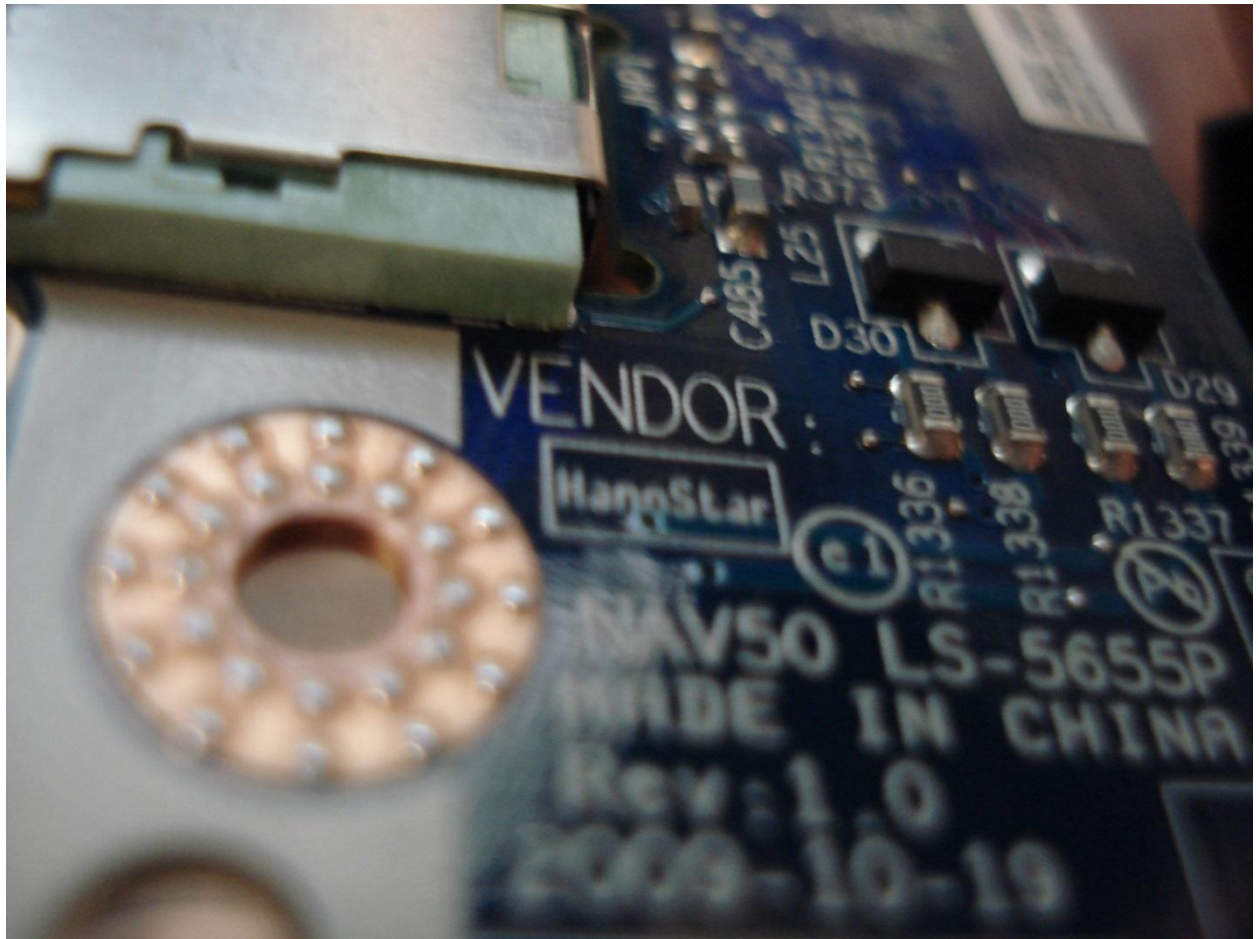
R312

R373









# 2.0TB



S/N : VMAZA1628675

- Advanced Format Drive. To achieve full performance:
- Windows® XP, multi partition and clone software available on [www.wd.com](http://www.wd.com)
  - Windows® XP, single partition - set up or use WD Align SW
  - All other OS configurations - drive is

# 2.0TB



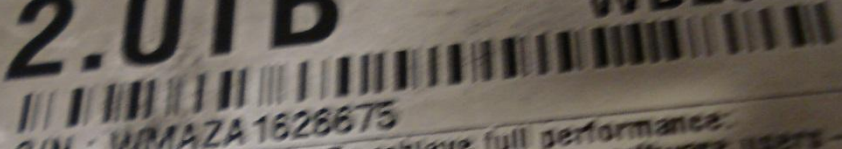
S/N : WMAZA1626675

- Advanced Format Drive. To achieve
- Windows® XP, multi partition and software available on [www.wdc.com](http://www.wdc.com)
  - Windows® XP, single partition -
- or use WD Align 6.0



# 2.0TB

SATA / 64MB Cache  
WD20EARS



S/N : WMAZA 1628673

- Advanced Format Drive. To achieve full performance:
- Windows® XP, multi partition and cloning software users - use software available on [www.wdc.com/advformat](http://www.wdc.com/advformat)
  - Windows® XP, single partition - set jumpers 7-8 prior to install or use WD Align S/W
  - All other OS configurations - drive is ready for use as is

Additional jumper settings available at [www.wdc.com/support](http://www.wdc.com/support)

MDL : WD20EARS - 00MVWB0



Product warranty will be void if seal, label or cover is removed or damaged.

WWN: 50014EE600881603

DATE: 13 OCT 2010

FACTORY JUMPER SETTINGS

Do not cover any drive

LBA :  
SVCC

www.westerndigital.com

SATA / 64MB Cache  
WD20EAR

# 2.0TB



S/N : WMAZA 1626675

- Advanced Format Drive. To achieve full performance:
- Windows® XP, multi partition and cloning software users - use software available on [www.wdc.com/advformat](http://www.wdc.com/advformat)
  - Windows® XP, single partition - set jumpers 7 - 8 prior to use or use WD Align SW
  - All other OS configurations - drive is ready for use as is

Additional jumper settings available at  
[www.wdc.com/support](http://www.wdc.com/support)

MDL : WD20EARS - 00MVWB0



Product warranty will be void if seal,  
label or cover is removed or damaged.

WWN: 50014EE600881603

DATE OF MANUFACTURE: OCT 2010

160 MB  
7.2MB/s  
14.7MB/s

Do not  
any  
LBA  
512



Assembled in China. Complies with the Canadian ICES-003 Class B sp  
Hz 4.0A. Contains FCC ID: QDS-BRCM1029 and IC: 4324A-BRCM1



Serial No.: W8025AXGDB7 EMC No.: 2389





ed in China. Complies with the Canadian ICES-003 Class B spec  
4.0A. Contains FCC ID: QDS-BRCM1029 and IC: 4324A-BRCM102



Serial No.: W8025AXGDB7 EMC No.: 2389



Designed by Apple in California Assembled  
Model Number: A1311 100-240V~, 50-60Hz 4