

FILE DESCRIPTION

NEW YORK FILE

SUBJECT Emil Julius Klaus Fuchs

FILE NO. 65-15136

VOLUME NO. 1

SERIALS 1

thru

95

NOTICE

THE BEST COPIES OBTAINABLE ARE INCLUDED IN THE REPRODUCTION OF THE FILE. PAGES INCLUDED THAT ARE BLURRED, LIGHT OR OTHERWISE DIFFICULT TO READ ARE THE RESULT OF THE CONDITION AND OR COLOR OF THE ORIGINALS PROVIDED. THESE ARE THE BEST COPIES AVAILABLE.

File No: 65-15136Re: EMIL JULIUS KLAUS FUCHSDate: 12/77
(month/year)

Serial	Date	Description (Type of communication, to, from)	No. of Pages		*	Exemptions used or, to whom referred (Identify statute if (b)(3) cited)
			Actual	Released		
1	9-29-49	N.Y. INTEROFFICE CORRESPONDANCE (FO-71)	1	1	NO	
2	10-13-49	N.Y. TELETYPE TO WFO	1	1	NO	
3	10-18-49	WFO TELETYPE TO N.Y. + H.Q.	1	-	YES	SEE BUFILE 65-58805
4	10-12-49	CGSAC TO H.Q.	4	-	YES	BUFILE 65-58805
5	10-17-49	EP SAC TO H.Q.	1	1	YES	Being Processed SEE BUFILE 65-58805
6	10-21-49	EP TELETYPE TO NYSAC	1	1	NO	
7	10-22-49	KX TELETYPE TO H.Q. + NYSAC	1	-	YES	BUFILE 65-58805
8	10-20-49	EP REPORT	12	-	YES	BUFILE 65-58805
9	10-24-49	IDENTIFICATION FORM TO N.Y.	1	1	YES	
10	10-24-49	HQ LETTER TO NYSAC	2	-	YES	SEE BUFILE 65-58805
11	10-27-49	HQ LETTER TO NYSAC	1	-	YES	SEE BUFILE 65-58805
12	10-31-49	HQ LETTER TO NYSAC	4	-	YES	SEE BUFILE 65-58805

*Designated to or from Bureau and/or Albuquerque, New York

File No: 65-15136Re: EMIL JULIUS KLAUS FUKHSDate: 12/77
(month/year)

Serial	Date	Description (Type of communication, to, from)	No. of Pages		*	Exemptions used or, to whom referred (Identify statute if (b)(3) cited)
			Actual	Released		
13	10-21-49	N.Y. TELETYPE TO H.Q. EL PASO KNOXVILLE	1		YES	Bufile 65-58805
14	11-2-49	H.Q. LETTER TO NYSAC	6		YES	SEE BUFILE 65-58805
15	11-15-49	WFO REPORT	4		YES	Bufile 65-58805
16	11-15-49	H.Q. LETTER TO NYSAC	1		YES	Bufile 65-58805
17	11-21-49	KXSAC LETTER TO H.Q.	1		YES	Bufile 65-58805
18	11-23-49	NYSAC LETTER TO H.Q.	1		YES	Bufile 65-58805
19	11-25-49	H.Q. LETTER TO NYSAC	1		YES	Bufile 65-58805
20	11-28-49	THIRD PARTY NY TELETYPE TO H.Q.	2		YES	Bufile 65-58805
21	11-29-49	SACBA LETTER TO H.Q.	1		YES	SEE BUFILE 65-58805
22	11-30-49	H.Q. LETTER TO NYSAC	1		YES	Bufile 65-58805
23	12-5-49	NY REPORT	5		YES	Bufile 65-58805
24	12-10-49	EPSAC LETTER TO H.Q.	3		YES	SEE BUFILE 65-58805

*Designated to or from Bureau and/or Albuquerque, New York

File No: 65-15136Re: EMIL JULIUS KLAUS FUCHSDate: 12/77
(month/year)

Serial	Date	Description (Type of communication, to, from)	No. of Pages		*	Exemptions used or, to whom referred (Identify statute if (b)(3) cited)
			Actual	Released		
25	12-9-49	EP REPORT	7		YES	Bufile 65-58805
26	12-14-49	BOSTON TELETYPE TO HQ + NYSAC THIRD PARTY	1		YES	Bufile 65-58805
27	12-16-49	NY REPORT	24		YES	Bufile 65-58805
28	12-22-49	HQ LETTER TO NYSAC	1		YES	SEE BUFILE 65-58805
29	12-27-49	EPSAC LETTER TO H.Q.	1		YES	Bufile 65-58805
30	12-28-49	NHSAC LETTER TO H.Q.	1		YES	Bufile 65-58805
31	12-28-49	NY TELETYPE TO H.Q.	1		YES	Bufile 65-58805
32	12-29-49	HQ LETTER TO NYSAC	1		YES	Bufile 65-58805
33	12-29-49	KC REPORT	3		YES	Bufile 65-58805
34	1-4-50	HQ TELETYPE TO NYSAC THIRD PARTY	1		YES	Bufile 65-58805
35	1-4-50	NY TELETYPE TO AT, AS, + WFO	2		YES	Bufile 65-58805
36	1-4-50	NY TELETYPE TO HQ	1		YES	Bufile 65-58805

*Designated to or from Bureau and/or Albuquerque, New York

File No: 65-15726Re: EMIL JULIUS KLAUS FUCHSDate: 12/77
(month/year)

Serial	Date	Description (Type of communication, to, from)	No. of Pages		*	Exemptions used or, to whom referred. (Identify statute if (b)(3) cited)
			Actual	Released		
37	1-5-50	NYSAC LETTER TO HQ	2	-	YES	F2293 Bufile 65-57449-6
38	1-9-50	HQ TELETYPE TO NYSAC	1	-	YES	Bufile 65-58805
39	1-10-50	NOTE ON INTERVIEW CONCERNING DR. FUCHS ENC. TO SERIAL 40	3	-	YES	-52 (ENCLOSURE) F1108 Bufile 65-58805
40	1-9-50	HQ LETTER TO NYSAC	4	-	YES	Bufile 65-58805
41	1-4-50	EP SAC TO AQ SAC	1	1	YES	Being processed Bufile 65-58805
42	1-6-50	HQ LETTER TO NYSAC	1	-	YES	SEE BU FILE 65-58805
43	1-13-50	NYSAC TELETYPE TO H.Q.	1	-	YES	Bufile 65-58805
44	1-16-50	^{291/10-19-78} AT REPORT TO HQ	3	-	YES	^{291/10-19-78} Bufile 65-57449-9
45	1-16-50	KX REPORT	6	-	YES	F2293 65-57449-10 Bufile 65-58805
46	1-19-50	DN REPORT	1	-	YES	Bufile 65-58805
47	1-20-50	HQ LETTER TO NYSAC	2	-	YES	Bufile 65-58805
48	1-20-50	BS REPORT	10	10	YES	Being processed Bufile 65-58805

*Designated to or from Bureau and/or Albuquerque, New York

File No: 65-15136 Re: EMIL JULIUS KLAUS FUCHS

Date: 12/77
(month/year)

Serial	Date	Description (Type of communication, to, from)	No. of Pages		*	Exemptions used or, to whom referred (Identify statute if (b)(3) cited)
			Actual	Released		
49	1-23-50	AQ REPORT	14		YES	AQ 65-6
50	1-23-50	EP REPORT	1		YES	Bufile 65-58805
51	1-24-50	AQ SAC LETTER TO HQ	1		YES	AQ 65-6
52	2-2-50	HQ TELETYPE TO NY + BS	1		YES	Bufile 65-58805
53	2-2-50	HQ TELETYPE TO AG	1		YES	Bufile 65-58805
54	2-2-50	N.Y. TELETYPE TO H.Q.	1		YES	Bufile 65-58805 Called to try to locate 1/9/78.
55	2-15-50	TRANSFER SHEET	1	1	NO	
56	2-3-50	NK TELETYPE TO HQ + NY	1		YES	Bufile 65-58805
57	2-3-50	NYASAC MEMO TO FILE	1	1	NO	
58	2-3-50	NYASAC MEMO TO FILE	1	1	NO	
59	2-3-50	NYSAC LETTER TO H.Q.	1		YES	Bufile 65-58805
60	2-3-50	NYSAC TELETYPE TO BS + HQ	2		YES	Bufile 65-58805

*Designated to or from Bureau and/or Albuquerque, New York

File No: 65-15136Re: EMIL JULIUS KLAUS FUCHSDate: 12/77
(month/year)

Serial	Date	Description (Type of communication, to, from)	No. of Pages		*	Exemptions used or, to whom referred (Identify statute if (b)(3) cited)
			Actual	Released		
61	2-3-50	SAC NY LETTER TO HQ	1	-	YES	Bufile 65-58805
62	2-4-50	SAC NY LETTER TO BS	1	1	NO	
63	2-4-50	NY TELETYPE TO HQ, BS, NK	1	-	YES	Bufile 65-58805 Being Processed
64	2-5-50	HQ TELETYPE TO NY + BS	1	1	YES	Bufile 65-58805 P2-293
65	2-6-50	HQ TELETYPE TO NY + BS	1	-	YES	Bufile 65-58805-80
66	2-6-50	NK TELETYPE TO HQ + NY	1	-	YES	Bufile 65-58805 -77 F1108
67	2-6-50	HQ TELETYPE TO NY + BS	1	-	YES	Bufile 65-58805 -760 F1108
68	2-6-50	NY TELETYPE TO CE, BS, HQ, CV	2	-	YES	Bufile 65-58805 ser 183
69	2-6-50	AQSAC LETTER TO HQ	3	-	YES	Hq 65-58805 P2-293
70	2-7-50	NYSAC TELETYPE TO HQ, WFO, CV	2	-	YES	Bufile 65-58805-78
71	2-7-50	CV TELETYPE TO HQ + NYSAC	1	1	YES	Being Processed Bufile 65-58805
72	2-7-50	HQ TELETYPE TO NY + BS	1	-	YES	Bufile 65-58805

*Designated to or from Bureau and/or Albuquerque, New York

File No: 65-15136

Re: EMIL JULIUS KLAUS FUCHS

Date: 12/97
(month/year)

Serial	Date	Description (Type of communication, to, from)	No. of Pages		*	Exemptions used or, to whom referred (Identify statute if (b)(3) cited)
			Actual	Released		
73	2-7-50	NKSAC LETTER TO H.Q.	2	-	YES	F2 293 Bufile 65-58805-1011
74	2-7-50	HQ LETTER TO NYSAC	2	-	YES	ser. 185 (279) Bufile 65-58805/9/1/91
75	2-7-50	AQSAC LETTER TO H.Q.	18	-	YES	ser 284 Hq. 65-58805
76	2-8-50	HQ TELETYPE TO NY + BS	1	-	YES	Bufile 65-58805
77	2-7-50	HQ LETTER TO NYSAC	3	-	YES	Bufile 65-58805
78	2-8-50	NYSAC TELETYPE TO HQ, CV, RX, WFO	2	-	YES	ser. 180 (279 - 9/15/98) Bufile 65-58805
79	2-7-50	NYSAC TELETYPE TO HQ, CI, CV, WFO	2	-	YES	F2-293 Bufile 65-58805-781
80	2-8-50	NYSAC TELETYPE TO HQ, WFO, NK	3	0	YES	being processed Bufile 65-58805
81	2-8-50	NYSAC TELETYPE TO CV	1	1	NO	
82	2-8-50	WFO TELETYPE TO NY + HQ	2	-	YES	Bufile 65-58805
83	2-7-50	HQ TELETYPE TO ALSAC	1	-	YES	Bufile 65-58805
84	2-8-50	CVSAC TELETYPE TO NYSAC	1	1	NO	

*Designated to or from Bureau and/or Albuquerque, New York

File No: 65-15136Re: EMIL JULIUS KLAUS FUCHSDate: 12/77
(month/year)

Serial	Date	Description (Type of communication, to, from)	No. of Pages		*	Exemptions used or, to whom referred (Identify statute if (b)(3) cited)
			Actual	Released		
85	2-8-50	AQ TELETYPE TO HQ, BS, NY	2		YES	Bufile 65-58805
86	2-9-50	NYSAC TELETYPE TO H.Q.	1		YES	Bufile 65-58805
87	2-9-50	AQ TELETYPE TO HQ, BS, NY.	1		YES	Bufile 65-58805
88	2-9-50	HQ TELETYPE TO NY, BS, NK	1		YES	Bufile 65-58805
89	2-9-50	NY REPORT	15		YES	Bufile 65-58805
90	2-9-50	NYSA MEMO TO FILE	2	0	NO	referral to another government agency
91	2-9-50	NYSAC MEMO TO FILE	1	1	NO	b1, 7c
92	2-9-50	HQ LETTER TO SFSAC THIRD PARTY	3		YES	Bufile 65-58805
93	2-9-50	BS REPORT	61		YES	Bufile 65-58805
94	2-9-50	ENCLOSURE TO AQSAC LETTER TO H.Q. SERIAL 94A	23		YES	AQ 65-6
94a	2-9-50	AQSAC LETTER TO H.Q.	1		YES	AQ 65-6
95	2-9-50	AQSAC LETTER TO H.Q.	4		YES	Bufile 65-58805

*Designated to or from Bureau and/or Albuquerque, New York

Serial Number	Date of Serial	DELETION (S)	
1	9/27/49	(b) (1) - Line 3 has been classified pursuant to Executive Order 11652 on 1/19/78, and it bears the Classification Officer's number 49131.	
2	10/13/49	No exemptions were cited.	
3	10/18/49	This teletype was previously processed as shown on the Inventory Worksheet.	
4	10/12/49	This letter was previously processed as shown on the Inventory Worksheet.	
5	10/17/49	This letter was previously processed as shown on the Inventory Worksheet.	
6	10/21/49	No exemptions were cited.	
7	10/22/49	This teletype was previously processed as shown on the Inventory Worksheet.	
8	10/20/49	This report was previously processed as shown on the Inventory Worksheet.	
9	10/24/49	No exemptions were cited.	
10	10/24/49	This letter was previously processed as shown on the Inventory Worksheet.	
11	10/27/49	This letter was previously processed as shown on the Inventory Worksheet.	
12	10/31/49	This letter was previously processed as shown on the Inventory Worksheet.	
13	10/21/49	This teletype was previously processed as shown on the Inventory Worksheet.	

Serial Number	Date of Serial	DELETION (S)
14	11/7/49	This letter was previously processed as shown on the Inventory Worksheet.
15	11/15/49	This report was previously processed as shown on the Inventory Worksheet.
16	11/15/49	This letter was previously processed as shown on the Inventory Worksheet.
17	11/21/49	This letter was previously processed as shown on the Inventory Worksheet.
18	11/23/49	This letter was previously processed as shown on the Inventory Worksheet.
19	11/25/49	This letter was previously processed as shown on the Inventory Worksheet.
20	11/28/49	This teletype was previously processed as shown on the Inventory Worksheet.
21	11/28/49	This letter was previously processed as shown on the Inventory Worksheet.
22	11/30/49	This letter was previously processed as shown on the Inventory Worksheet.
23	12/5/49	This report was previously processed as shown on the Inventory Worksheet.
24	12/9/49	This letter was previously processed as shown on the Inventory Worksheet.
25	12/9/49	This report was previously processed as shown on the Inventory Worksheet.

Serial Number	Date of Serial	DELETION (S)
26	12/14/49	This teletype was previously processed as shown on the Inventory Worksheet.
27	12/16/49	This report was previously processed as shown on the Inventory Worksheet.
28	12/22/49	This letter was previously processed as shown on the Inventory Worksheet.
29	12/27/49	This letter was previously processed as shown on the Inventory Worksheet.
30	12/28/49	This letter was previously processed as shown on the Inventory Worksheet.
31	12/28/49	This teletype was previously processed as shown on the Inventory Worksheet.
32	12/29/49	This letter was previously processed as shown on the Inventory Worksheet.
33	12/29/49	This report was previously processed as shown on the Inventory Worksheet.
34	1/4/50	This teletype was previously processed as shown on the Inventory Worksheet.
35	1/4/50	This teletype was previously processed as shown on the Inventory Worksheet.
36	1/4/50	This teletype was previously processed as shown on the Inventory Worksheet.
37	1/5/50	This letter was previously processed as shown on the Inventory Worksheet.

Serial Number	Date of Serial	DELETION (S)
38	1/9/50	This teletype was previously processed as shown on the Inventory Worksheet.
39	1/10/50	This enclosure was previously processed as shown on the Inventory Worksheet.
40	1/9/50	This letter was previously processed as shown on the Inventory Worksheet.
41	1/4/50	This letter was previously processed as shown on the Inventory Worksheet.
42	1/6/50	This letter was previously processed as shown on the Inventory Worksheet.
43	1/13/50	This teletype was previously processed as shown on the Inventory Worksheet.
44	1/16/50	This report was previously processed as shown on the Inventory Worksheet.
45	1/16/50	This report was previously processed as shown on the Inventory Worksheet.
46	1/19/50	This report was previously processed as shown on the Inventory Worksheet.
47	1/20/50	This letter was previously processed as shown on the Inventory Worksheet.
48	1/20/50	This report was previously processed as shown on the Inventory Worksheet.
49	1/23/50	This report was previously processed as shown on the Inventory Worksheet.

Serial Number	Date of Serial	DELETION (S)
50	1/23/50	This report was previously processed as shown on the Inventory Worksheet.
51	1/24/50	This letter was previously processed as shown on the Inventory Worksheet.
52	2/2/50	This teletype was previously processed as shown on the Inventory Worksheet.
53	2/2/50	This teletype was previously processed as shown on the Inventory Worksheet.
54	2/2/50	This teletype was previously processed as shown on the Inventory Worksheet.
55	2/15/50	S. A. Jerry Campana of New York telephonically advised on 1/10/78, that this serial is a irretrievable reference.
56	2/3/50	This teletype was previously processed as shown on the Inventory Worksheet.
57	2/3/50	No exemptions were cited.
58	2/3/50	No exemptions were cited.
59	2/3/50	This letter was previously processed as shown on the Inventory Worksheet.
60	2/3/50	This teletype was previously processed as shown on the Inventory Worksheet.
61	2/3/50	This letter was previously processed as shown on the Inventory Worksheet.
62	2/4/50	No exemptions were cited.

Serial Number	Date of Serial	DELETION (S)
63	2/4/50	This teletype was previously processed as shown on the Inventory Worksheet.
64	2/5/50	This teletype was previously processed as shown on the Inventory Worksheet.
65	2/6/50	This teletype was previously processed as shown on the Inventory Worksheet.
66	2/6/50	This teletype was previously processed as shown on the Inventory Worksheet.
67	2/6/50	This teletype was previously processed as shown on the Inventory Worksheet.
68	2/6/50	This teletype was previously processed as shown on the Inventory Worksheet.
69	2/6/50	This letter was previously processed as shown on the Inventory Worksheet.
70	2/7/50	This teletype was previously processed as shown on the Inventory Worksheet.
71	2/7/50	This teletype was previously processed as shown on the Inventory Worksheet.
72	2/7/50	This teletype was previously processed as shown on the Inventory Worksheet.
73	2/7/50	This letter was previously processed as shown on the Inventory Worksheet.
74	2/7/50	This letter was previously processed as shown on the Inventory Worksheet.

Serial Number	Date of Serial	DELETION (S)
75	2/7/50	This letter was previously processed as shown on the Inventory Worksheet.
76	2/8/50	This teletype was previously processed as shown on the Inventory Worksheet.
77	2/7/50	This letter was previously processed as shown on the Inventory Worksheet.
78	2/8/50	This teletype was previously processed as shown on the Inventory Worksheet.
79	2/7/50	This teletype was previously processed as shown on the Inventory Worksheet.
80	2/8/50	This teletype was previously processed as shown on the Inventory Worksheet.
81	2/8/50	No exemptions were cited.
82	2/8/50	This teletype was previously processed as shown on the Inventory Worksheet.
83	2/7/50	This teletype was previously processed as shown on the Inventory Worksheet.
84	2/8/50	No exemptions were cited.
85	2/8/50	This teletype was previously processed as shown on the Inventory Worksheet.
86	2/9/50	This teletype was previously processed as shown on the Inventory Worksheet.
87	2/9/50	This teletype was previously processed as shown on the Inventory Worksheet.

Serial Number	Date of Serial	DELETION (S)	
88	2/9/50	This teletype was previously processed as shown on the Inventory Worksheet.	
89	2/9/50	This report was previously processed as shown on the Inventory Worksheet.	
90	2/9/50	This memo was referred to another Government Agency.	
91	2/9/50	(b) (1) paragraph 4 has been classified pursuant to Executive Order 11652 on 10/22/75, and it bears the Classification Officer's number 2355. (b) (7) (C) the name of a third party was withheld in paragraph 2 to the extent that the release of this information would constitute an unwarranted invasion of personal privacy.	
92	2/9/50	This letter was previously processed as shown on the Inventory Worksheet.	
93	2/9/50	This report was previously processed as shown on the Inventory Worksheet.	
94	2/9/50	This enclosure was previously processed as shown on the Inventory Worksheet.	
94a	2/9/50	This letter was previously processed as shown on the Inventory Worksheet.	
95	2/9/50	This letter was previously processed as shown on the Inventory Worksheet.	

U. S. Department of Justice

(MATERIAL MUST NOT BE REMOVED FROM OR ADDED TO THIS FILE)

FEDERAL BUREAU

of

INVESTIGATION

Bureau File Number

iso Nos.

*Subs.
Sheet Section*

Serials

1-95

Volume Number

66-15136

Closed



FD-71
(7-30-45)

United States Department of Justice
Federal Bureau of Investigation



IN REPLY, PLEASE REFER TO
FILE NO. _____

COMPLAINT FORM

INDEXED

Emil Julius Klaus, was Dr. Karl

Subject's Name and Aliases

Fuchs, Klaus Fuchs, Klaus Emil

Name of Complainant

Address of Complainant

Address of Subject

Esp - R

Character of Case

Telephone Number of Complainant

Date and Time Complaint Received

DESCRIPTION OF SUBJECT:

No Record.
References

Karl Fuchs
65-11010-24305-6
Files - New York Office 59101-2
253 4137
9/22/49

FACTS OF COMPLAINT:

See Bulch. 9/22/49 in 65-14843-98

ACTION RECOMMENDED BY AGENT:

Open 65-R 2000 M.Y. charges, dig. file
maintain file

[Handwritten signatures and initials]

FBI	
SEP 27 1949	
N.Y.C. 1	
ROUTED TO	FILE

Special Agent

[Handwritten name]

65-15136-1

FEDERAL BUREAU OF INVESTIGATION

UNITED STATES DEPARTMENT OF JUSTICE

NEW YORK, N. Y.
OCTOBER 13, 1949

Transmit the following Teletype message to:

WASHINGTON FIELD...URGENT

EMIL JULIUS KLAUS FUCHS, WAS, ET AL, ESP-R. REBULET SEPTEMBER TWENTY
SECOND LAST. ADVISE RESULTS OF INS CHECK ON SUBJECT EMIL FUCHS, PARTICULAR
REFERENCE ON ALL U.S. ADDRESSES FURNISHED BY HIM. SUTEL

SCHEIDT

JRM:IM
65-15136

Approved: [Signature]
Special Agent in Charge

Sent 9-38P Per [Signature]
cm

65-15136-2

OCTOBER 17, 1949

DIRECTOR, FBI

SAC, EL PASO

AIR MAIL SPECIAL DELIVERY - REGISTERED

EMIL JULIUS KLAUS FUCHS, was.
ESPIONAGE - R

ATTENTION: IDENTIFICATION DIVISION

Enclosed herewith are fingerprint cards of EMIL JULIUS KLAUS FUCHS and RUDOLF ERNST PETERLS. These prints were taken by the U. S. Engineers Office at Los Alamos, New Mexico in 1944, but no copies were ever sent to the Identification Division of the Bureau.

It is requested that these prints be searched against the files of the Identification Division and the result thereof furnished to the New York Office.

JJM:eb
65-771
(cc) - New York (AMSD)
Encls.
AMSD - REG.

65-15136-5
F. B. I.
6 OCT 18 1949
N. Y. C.
ROUTED TO
[Signature]

SP
mvl
10-19
P

DECODE

FBI, EL PASO
SAC, NEW YORK

10-2149

8-41 PM MST

MR. SCHEIDT
MR. BELMONT
MR. WHELAN
MR. COLLIER
MR. GRANVILLE
MR. HILTON
MR. HUGHES
MR. KENNEDY
MR. LADD
MR. NICHOLS
MR. ROSEN
MR. TRACY
MR. WOOD
MR. MOHR
MR. WINTERROWD
TELE. ROOM
MR. HOLLOMAN
MISS GANDY

URGENT

EMIL JULIUS KLAUS FUCHS, WAS, ESP-R. RE UR TEL TODAY. REPORT SUBMITTED YOUR OFFICE OCTOBER TWENTY LAST REFLECTING SUBJECT AS LOS ALAMOS ATOMIC ENERGY PROJECT AS MEMBER OF BRITISH MISSION AUGUST FOURTEEN OF NINETEEN FORTY FOUR TO JUNE FIFTEEN OF NINETEEN FORTY SIX. WORKED IN THEORETICAL PHYSICS DIVISIONS, HAD ACCESS TO HIGHLY CLASSIFIED INFORMATION CONCERNING PRESENT ATOMIC BOMB AND LONG RANGE RESEARCH. SUBJECT IN MONTREAL, CANADA AND IN MEXICO CITY IN NOVEMBER AND DECEMBER OF NINETEEN FORTY FIVE. MADE TRIP TO SEE SISTER MRS. HEINEMAN, CAMBRIDGE, MASSACHUSETTS FEBRUARY OF NINETEEN FORTY FIVE. INVESTIGATION CONTINUING HERE AND REQUESTED OF WFO RE TRIPS TO CANADA AND MEXICO. PHOTOGRAPHS FORWARDED TO YOU WITH ABOVE REPORT.

BROWN

END PLS ACK

FBI NYC JFM REC. AT 10-35 PM EST

DECODED BY JFM

JFM

65-15136-6
F. E. I.
OCT 21 1949
N. Y. C.

J.R. Murphy

Fuchs, Klaus Emil Julius
Fuchs, Klaus

W 1911 5-9

10 S 1 Rt II 8
S 1 U OII

Ref T
U

#65-771 BFD El Paso Texas 10-19-49

A search of the fingerprints on the above individual has failed to disclose prior criminal data.

Air Mail - Special Delivery

J. Edgar Hoover

DIRECTOR

FEDERAL BUREAU OF INVESTIGATION

Fuchs, Klaus

W 1911 5-9

10 S 1 Rt II 8
S 1 U OII

Ref T
U

#65-771 BFD El Paso Texas

Fuchs, Klaus Emil Julius

A search of the fingerprints on the above individual has failed to disclose prior criminal data.

Air Mail - Special Delivery

J. Edgar Hoover

DIRECTOR

FEDERAL BUREAU OF INVESTIGATION

65-1513-X-9
[Handwritten signature]

*Mc Co
10/12/49*

TRANSFER SLIP
CHARGE-OUT SLIP

FD-8
(1-1-45)

DATE

2/1/50

ENTIRE FILE

CLASS

NUMBER

LAST SERIAL

SERIALS

55

OF

65-15136

nytel 2/2/50 transferred to
65-15185-

CLASS

FILE NUMBER

LOCATION

SPECIAL AGENT

RECHARGE

DATE

TO

FROM

Office Memorandum • UNITED STATES GOVERNMENT

TO : SAC, Albuquerque

FROM : SAC, El Paso

SUBJECT: EMIL JULIUS KLAUS FUCHS, was.
ESPIONAGE - R

DATE: January 4, 1950

There is inclosed one copy of Bureau letter to New York dated 12-29-49, instructing that the various fellow employees of FUCHS and PRIENIS at Los Alamos not be interviewed in connection with this case at the present time. *U*

It is observed that the only investigation outstanding in the El Paso Office is a check of the records of the U. S. Immigration and Naturalization Service at El Paso. This will be given attention in the immediate future and the case placed in a RUC status. *U*

FTM/cl
65-771

Inclosure Albuquerque - copy letter
cc: New York

65-15136-41
FBI - NEW YORK
JAN 9 1950

J. R. Magley

FEDERAL BUREAU OF INVESTIGATION

This Case Originated At BOSTON, MASS.

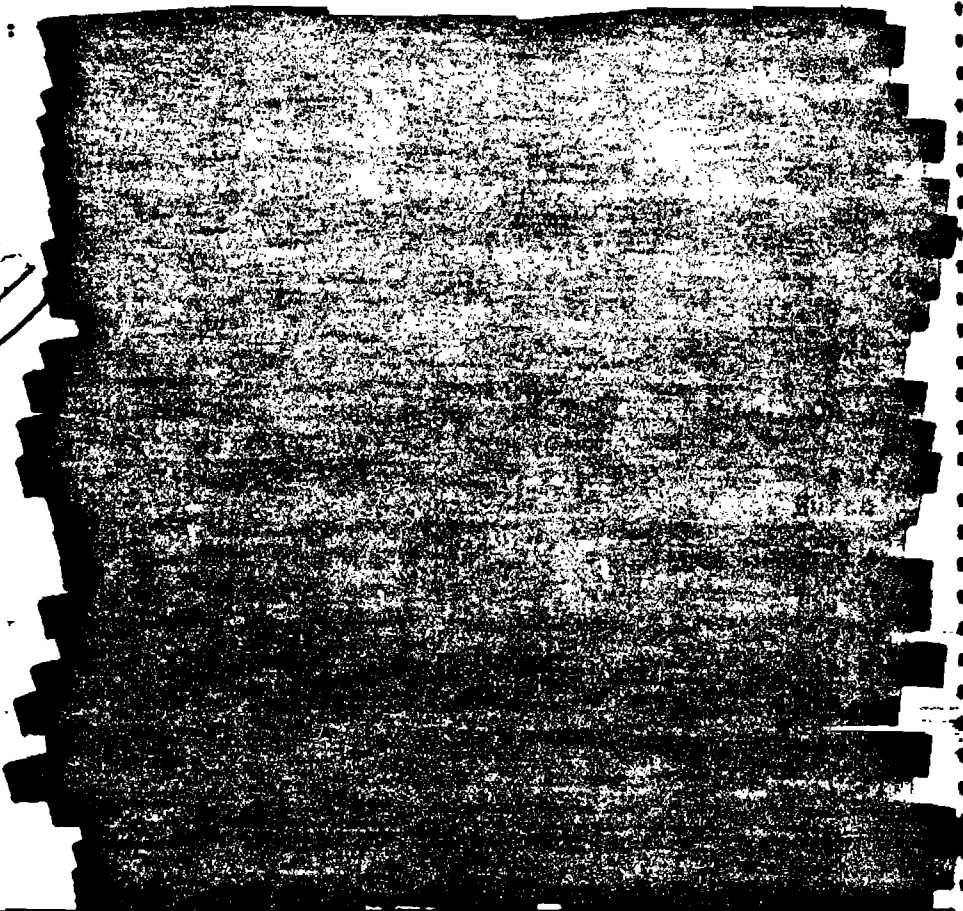
File No. 65-3304 MFA

~~TOP SECRET~~

Report Made At BOSTON, MASS.	Date When Made 1-20-1950	Period for which made 12-27, 28, 29/ 1949	Report Made By CHARLES E. PELLETIER
---------------------------------	-----------------------------	---	--

Title KRISTEL KLAUS HEINEMAN, was	Character of Case ESPIONAGE-R
--------------------------------------	----------------------------------

Synopsis of Facts:



PROPRIETARY AGENCIES
AND FIELD OFFICES
ADVISED BY ROUTING
SLIP (S) OF
DATE 10/2/55
65-15136

to be included
in 65-15137

b1

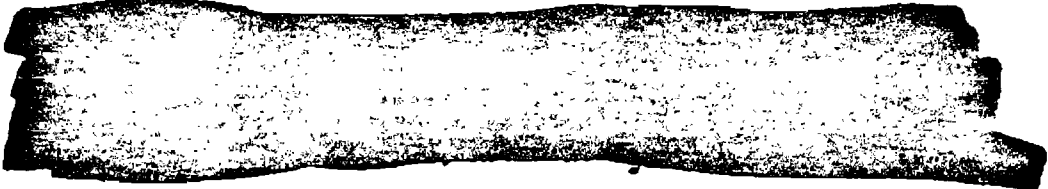
Approved and Forwarded:	Special Agent in Charge
-------------------------	-------------------------

- Copies of this report
- 5 Bureau
 - ③ New York (65-15137) (1 copy 65-15136)
 - 2 Chicago
 - 3 Washington Field (65-5359) (1 Same)
 - 3 Boston

65-15136-418
FBI - NEW YORK
JAN 24 1950

Classified by 1039
Exempt from GDS, etc. by 23
Date of Declassification Indefinite
9/10/78

~~TOP SECRET~~



P

b1

References:

Bureau file 100-346,228.
Report of Special Agent CHARLES E. PELLETIER, dated
October 27, 1949 at Boston, Mass.
Bureau letter to Boston dated November 14, 1949.

Details:

[REDACTED] BANK ACCOUNTS

The records of the [REDACTED] reflect [REDACTED]

Subject's husband [REDACTED] indicated the husband resided at 54 Lake View Avenue, Cambridge, Massachusetts, and that his wife's name is KRISTEL F. They formerly resided at 144 Lake View Avenue, Cambridge, Massachusetts, for over five years, and prior to that, resided at 55 Carver Road, Watertown, Massachusetts; 1690 Cambridge Street, Cambridge, and 5333 Everett Avenue, Chicago, Illinois. His occupation is said to be with G. B. HEINEMAN COMPANY of Chicago, Illinois, as Manager, for one year. b7D

During the war years, he was employed with the GENERAL ELECTRIC COMPANY and was a student at Harvard Graduate School and is said to have a comfortable income from his parents. His bank account is shown as the Harvard Trust Company where he maintains a low three-figure balance as of November, 1947. The premises in which they reside are assessed to them for \$11,500.

[REDACTED] Subject's husband had a good personal reputation, and that he had an account at the Clarendon Interiors, Inc. in May of 1947, and one at the Fresh Pond Market as of July, 1947. He also has an attorney's account at Stearns, as of December, 1948. b7D

[REDACTED] Subject KRISTEL HEINEMAN, dated November 20, 1947, showed no additional information except that at that time, her husband was not employed, [REDACTED] that he was going to work in some store in Cambridge, Massachusetts. There was nothing [REDACTED] indicating the receipt of any ^{income from} relatives from Germany. [REDACTED] mentioned in referenced report dated October 27, 1949 has since been destroyed. b7D

At the Harvard Trust Company, Harvard Square, Cambridge, Massachusetts, Confidential Informant T-3, of known reliability, advised that ROBERT B. HEINEMAN and his wife, KRISTEL HEINEMAN, opened a student joint checking account on September 28, 1939, with a deposit of \$298. At the time, their residence was 1698 Cambridge Street, Cambridge, and effective June 30, 1941, their address was changed to 94 Lake View Avenue, Cambridge, Massachusetts. This account was closed on March 22, 1949.

ROBERT B. HEINEMAN hired a safety deposit box on November 2, 1946 and the box is still active. The records of the bank were checked for any foreign remittances received by Subject or her husband and none was located. A record was located indicating that on April 30, 1946, Subject's account was credited with \$18,600. This was a telegraphic money order received from the First National Bank of Boston, and in turn originated at the First National Bank of Chicago.

The bank ledger cards and the face of all checks received at this bank are normally photographed through the medium of the Recordak machine. However, the films are stored in a warehouse and informant advised that it would be rather difficult to obtain them. However, they can be obtained if absolutely necessary.

Confidential Informant also advised that ROBERT B. HEINEMAN opened a checking account under the name of the Huron Self Service store, 146 Huron Avenue, Cambridge, Massachusetts, on September 27, 1947, with a deposit of \$8,000. This is a launderette and Subject's husband listed himself as the sole proprietor. A medium three-figure balance is maintained in this account.

At the Assessor's Office, City of Cambridge, Massachusetts, it was ascertained that the premises at 94 Lake View Avenue, Cambridge, Massachusetts, are assessed to ROBERT B. and KRISTEL F. HEINEMAN. The premises consist of 15,300 square feet of land, assessed for \$7,300, house assessed at \$4,100 and a garage at \$100, making a total of \$11,500, the 1949 tax being \$457.70.

EMPLOYMENT

An examination of the current telephone directories and the directories of the City of Boston failed to disclose any local office for the American Field Service. It should be noted that in 1944, Subject's husband applied for^{as} Overseas ambulance driver's job.

At the American Red Cross, 17 Gloucester Street, Boston, Massachusetts, it was ascertained from the office of the Executive Secretary that the American Field Service maintains no Boston office, and that the Headquarters is now located at New York City.

At the GENERAL ELECTRIC COMPANY, West Lynn, Massachusetts, River Works Plant, Special Agent CLEMENT A. O'BRIEN contacted Confidential Informant T-1, of known reliability, who examined the personnel record and advised that ROBERT B. HEINEMAN, while employed by the company, took a five-day vacation, starting May 14, 1944. However, there was no information contained in the file indicating that he travelled during this vacation. There was no photograph of him in the file.

At the office of the City Clerk, City of Cambridge, Cambridge, Massachusetts, it was ascertained that a business certificate was filed on September 23, 1947, under Provision 110, General Laws. It was recorded in Volume 26, page 51. The name of the business was the Huron Self Service Store, 146 Huron Avenue, Cambridge, Massachusetts. The owner was listed as G. B. HEINEMAN, 320 South Plymouth Court, Chicago, Illinois. It should be noted that this individual is the Father of Subject's husband.

MARRIAGE

At the Office of the Registrar of Births, City Hall Annex, Boston, Massachusetts, it was ascertained that record 4,841, indicated that ROBERT B. HEINEMAN and KRISTEL FUCHS were married at Boston, Massachusetts, on November 2, 1938. The groom was described as being twenty-one years of age, first marriage, residence Chicago, Illinois, occupation student, born at Wausau, Wisconsin, the son of GABRIEL B. HEINEMAN and ALMA BLOCK.

The application disclosed the following information concerning the bride: twenty-four years of age, first marriage, residence New York, New York, occupation not shown, born in Germany, the daughter of EMIL FUCHS and ELISABETH WAGNER.

EDUCATION

At Boston University, Commonwealth Avenue, Boston, Massachusetts, [redacted] checked the University records and failed to locate any record of Subject's husband teaching at Boston University in 1945. b7D

At Boston University, School of Education, 84 Exeter Street, Boston, Massachusetts, [redacted] examined the records and advised that ROBERT B. HEINEMAN was a student in the course entitled "Teaching Literature in High School" during 1945-1946. The record failed to indicate that he ever taught at the School of Education, and there was no additional b7D information in the file.

At Northeastern University, Huntington Avenue, Boston, Massachusetts, [REDACTED] School of Business, Evening Division, advised that ROBERT B. HEINEMAN enrolled in the Engineering, Science, and Management War Training Course, known as "ESMTT" during February, 1943. He started on January 18, 1943 and the course was terminated March 27, 1943. This was merely a forty-hour course, and there was no additional pertinent information in the file. b7D

At the Harvard Graduate School of Arts & Sciences, 24 Quincy Street, Cambridge, Massachusetts, [REDACTED] examined the file on ROBERT D. HEINEMAN, and it was noted that the file contained a specimen of his handwriting, consisting of a letter written in ink. There was also a passport photograph of him as of 1938. There was no information contained in the file concerning his trip to Mexico City in February, 1947. There was no additional information in the file. b7D

At the Appointment Office of the Graduate School of Arts & Sciences, it was ascertained that Subject's husband filed an application during March, 1941. In the application, he listed foreign travel during the summer of 1937 in England, Italy, and France, for a period of three months. However, he did not list Russia. The file also contains specimens of his handwriting.

At the Harvard University School of Education, Lawrence Hall, Cambridge, Massachusetts, [REDACTED] examined the file on ROBERT B. HEINEMAN, which indicated that he is presently a student. He enrolled during September, 1949, and the term ends in February, 1950. He is a candidate for Master of Arts in teaching. He attends the evening classes which start at 4:00 P.M. b7D

The record indicated that after leaving the employ of the Antrim, New Hampshire, High School, he submitted an application to the Placement Office in 1946. The record indicated that he was a student at the School of Education during the summer of 1946 and from December, 1946, to December, 1947, he was a substitute teacher at the Melrose High School. The record indicated that he was a member of the United Nations Association and the record failed to contain no foreign travel except that previously mentioned in 1937. There was a photograph of him on file as of 1946.

[REDACTED] recalled him and stated that he is presently operating a laundrette, the location of which she did not know. b7D

NEIGHBORHOOD

It was ascertained by visual observation that Subject's residence at 94 Lake View Avenue, Cambridge, Massachusetts, is a one-family house located in a moderate residential district, not too far from Harvard College and within a mile of his present place of employment on Huron Avenue, Cambridge, Massachusetts.

[REDACTED] ^{b7E} the writer rang the Subject's doorbell several times, and no one answered the bell. There was observed on the floor of the vestibule a National Geography magazine addressed to STEPHEN and HAROLD HEINEMAN. There was also an official letter from the Navy Department in the mail box; however, the addressee was not ascertained.

At the Office of the City Clerk, City Hall, Cambridge, Massachusetts, the directories for the City of Cambridge were examined. The latest directory issued in 1948 listed Subject and husband as residing at 94 Lake View Avenue. The 1944 Directory lists them as residing at 144 Lake View Avenue. They were not listed in the 1941 Directory.

At the Assessor's Office, City Hall, the Poll Lists were examined which are issued annually in January. The 1947 Poll List listed Subject and her husband as residing at 94 Lake View Avenue, and that as of January 1, 1946, they resided at 144 Lake View Avenue. Subject's Husband's occupation was listed as a historian. Subject and her husband were listed in the 1943, 1944, 1945, and 1946 Poll Lists as residing at 144 Lake View Avenue, Cambridge, Massachusetts.

NATURALIZATION OF SUBJECT

At the Election Commission, Central Square, Cambridge, Massachusetts, [REDACTED] examined the records of that office and Subject is not registered as a voter. This information was obtained from the January, 1949, Police Listing. b7D

MISCELLANEOUS

Reference Bureau letter of November 14, 1949 indicated that Subject apparently was in the Westboro State Hospital, Westboro, Massachusetts, as of October, 1949, and may have been in the hospital for sometime prior to that date. This information was obtained from Confidential Informant T-2 of known reliability.

It should be noted that Subject's Alien Enemy Registration folder indicated that she had a brother GERHARD FUCHS in a sanatorium in Zurich, Switzerland.

P E N D I N G

ADMINISTRATIVE PAGE

[REDACTED] was examined by Special Employee RICHARD KELLY.

^{b7D}
All contacts at Harvard University were made with established confidential informants.

[REDACTED]

[REDACTED]

[REDACTED]

[REDACTED]

[REDACTED]

[REDACTED]

[REDACTED]

b1

LEADS

THE NEW YORK CITY FIELD OFFICE

AT NEW YORK

Will contact appropriate official of the American Field Service for any background information, foreign travel, and personnel record of ROBERT B. HEINEMAN, who in July of 1944, applied for overseas ambulance duty as a driver. His address at the time was 94 or 144 Lake View Avenue, Cambridge, Mass. He was born March 25, 1917 at Nausau, Wisconsin. The pertinent period in this case is 1944.

THE CHICAGO FIELD OFFICE

AT CHICAGO, ILLINOIS

At the First National Bank of Chicago, will check the records to determine the maker of the telegram to the First National Bank of Boston in the amount of \$18,600, on or about April 30, 1946. The amount was sent by the First National Bank of Boston to the Harvard Trust Company of Cambridge, Massachusetts, and credited to the joint account of Subject and her husband.

THE WASHINGTON FIELD OFFICE

AT WASHINGTON, D.C.

- Will examine the records of the Passport Division, State Department, for any passport issued to ROBERT B. HEINEMAN, particularly in 1937, or his wife, pursuant to Bureau letter of December 21, 1949.

THE BOSTON FIELD DIVISION

AT BOSTON, MASS.

Will obtain a list of toll calls from Subject's residence, previously requested.

At the United States, Immigration & Naturalization Service, Trammont Street, Boston, Massachusetts, will recheck the Alien Enemy Registration folder on KRISTEL F. HEINEMAN, which is now stored at East Boston to determine if any permits to travel were issued to her, particularly during 1944.

[REDACTED]

b1

[REDACTED]

b1

AT CAMBRIDGE, MASSACHUSETTS

Will attempt to locate [REDACTED] formerly of [REDACTED]

In this connection, it was ascertained that she no longer resides at [REDACTED]

The 1947 Poll List lists her name as [REDACTED] and a son, [REDACTED]

b7D

At the Cambridge Election Commission, will contact [REDACTED] and ascertain the identity of the officers scheduled to take the Census at Subject's residence in order to determine the occupants of the premises and whether it is possible to utilize any additional techniques.

b7D

Will endeavor to locate any additional bank accounts of Subject and her husband. (See Bureau letter to Boston dated November 14, 1949, serial 15.) It should be noted that sometime elapsed between the receipt of the remittance from the First National Bank of Chicago and the opening of the Huron Self Service account at the Harvard Trust Company on September 23, 1947, with a deposit of only \$8,000.


AT WESTBORO, MASSACHUSETTS

Will contact the appropriate official of the State Hospital to check the records for all background information on Subject including the diagnosis and prognosis and whether any additional techniques may be employed.

Will ascertain the identity of holder of Post Office Box 288.

CONFIDENTIAL INFORMANT SHEET


T-1:

 b7D
General Electric, River Works
Lynn, Massachusetts

~~TOP SECRET~~

T-2: a highly confidential source of the Bureau.

T-3:

 b7D
Harvard Forest Company
Cambridge, Massachusetts

~~TOP SECRET~~

Federal Bureau of Investigation
United States Department of Justice

New York, New York

February 3, 1950

- ...MR. SCHWIDT
- ...MR. BELMONT
- ...MR. WHELAN
- ...MR. COLLIER
- ...MR. GRANVILLE
- ...MR. HUGHES
- ...MR. LADD
- ...MR. NICHOLS
- ...MR. ROSEN
- ...MR. TRACY
- ...MR. WOOD
- ...MR. CLERK
- ...PROPERTY CLERK
- ...TRAINING UNIT

MEMO

RE: EMIL JULIUS KLAUS FUCHS
ESPIONAGE - R

On the afternoon of February 2, 1950, Mr. H. B. Fletcher of the Bureau called to advise that the above case should be given continuous and constant investigative attention; that all leads should be set out expeditiously and New York, as office of origin, should closely follow the case. He indicated that the Boston office is being instructed to interview the sister of FUCHS and her husband. Mr. Fletcher was advised that the Bureau's instructions would be complied with.

A. H. BELMONT
ASAG

AHB:CTC
65-15136

65-15136-57
FBI - NEW YORK
FEB 3 1950
J. P. Murphy

New York, New York

February 3, 1950

MEMO

RE: EMIL JULIUS KLAUS FUCHS
ESPIONAGE - R

At 11:30 am today, I called Mr. Leo Laughlin at the Bureau to advise him that the New York newspapers were carrying the story of the arrest of FUCHS on the front page in headlines; also that the headlines were reflecting that the FBI furnished the information to the British which lead to the arrest. I advised Mr. Laughlin that we had had a call from the press for photographs of the subject. He requested that I check with Assistant Director Nichols on this.

Mr. Nichols advised that the Bureau had released photographs of FUCHS. I advised him that we have the same photograph apparently here in New York; that it is one taken at Los Alamos with a bar across the chest with the number K 22. Mr. Nichols advised we could release this picture here also after we had removed the bar and the number.

Mr. Laughlin advised that the relatives of FUCHS in Boston were interviewed last night but he does not have the results as yet.

A. H. BELMONT
ASAC

AHB:CTC
65-15136

65-15136-5
FBI - NEW YORK
FEB 3 1950

SAC, Boston

February 4, 1950

SAC, New York

EMIL JACIUS KLAUS FUCHS
ESPIONAGE (R)

Enclosed herewith for the assistance of the Boston Office are two copies each of the photos of ABRAHAM BROTHMAN and ARTHUR PHINEAS WEBER.

Encl. 4

cc - NY 65-15185

JRM:EG
65-15136

SPECIAL DELIVERY

65-15136-627

- MR. SCHEIDT
- MR. BELMONT
- MR. WELLS
- MR. COLLIER
- MR. GRANVILLE
- MR. HUGHES
- MR. KENNEDY
- MR. LEVY
- MR. MARCESSAULT
- MR. RAGAN
- NIGHT SUPERVISOR
- MR. TERRY
- MR. TUOHY
- MR. WALSH
- MR. WOOD
- CHIEF CLERK
- PROPERTY CLERK
- TRAINING UNIT

NEW YORK 1 AND BOSTON 1 FROM WASH DC 5 12-24 AM

SACS URGENT

EMIL JULIUS LIX KLAUS FCXX FUCHS, ESP- R. ALBUQUERQUE REQUESTED
 OBTAIN IMMEDIATELY ALL INFO ON HOTLXXX HOTEL REGISTRATION CARDS
 AVAILABLE SANTA FE, N. M., ON PERSONS REGISTERING FROM EASTERN CITIES
 DURING JUNE, FRXX FORTY FIVE AND FORWARD SAME AMSD TO BUREAU AND
 NEW YORK. ALSO ADVISE NUMBER AND IDENTITY HOTELS NO LONGER HAVING
 RECORDS FOR JUNE, FORTY FIVE. NY OBRAIN PHOTO JOHN HENRY ARNOID AND
 FORWARD SAME TO BOSTON FOR DISP

LAY TO KRISTEL HEINEMAN. U

*done
 done
 done*

ALBUQUERQUE ADVISED
 END AND ACK IN ORDER

NY WA RIN
 BS WA R1 BS
 DSC

*JR Murphy
 advised
 2/5/50*

65-15736-64

FEB 5 1950
[Signature]

- MR. SCHEIDT
- MR. BELMONT
- MR. WHELAN
- MR. COLLIER
- MR. GRANVILLE
- MR. HUGHES
- MR. KENNEDY
- MR. LEVVIS
- MR. MARCHESSAULT
- MR. RAGAN
- NIGHT SUPERVISOR
- MR. KING
- MR. TUOHY
- MR. VALEN
- MR. WOHL
- CHIEF CLERK
- PROPERTY CLERK
- TRAINING UNIT

FBI CLEVELAND 2-7-50 6-48 PM RGM

DIRECTOR AND SAC NEW YORK URGENT

EMIL JULIUS KLAUS FUCHS, WAS, ESP, R. RE NEW YORK TEL FEB. SIX LAST.

OFFICIALS H. K. FERGUSON CO., CLEVELAND ESTIMATE IN EXCESS THREE THOUSAND INDIVIDUALS EMPLOYED ON PROJECT NUMBER S FIVE NAUGHT. RECORDS WHICH ARE CONTAINED IN INDIVIDUAL JACKETS, AVAILABLE BUT IN DEAD STORAGE. THIS OFFICE MUST PROVIDE NECESSARY PERSONNEL TO SEARCH FILES. PERSONNEL RECORDS ARE FILED BY CALENDAR YEARS AND RECORDS FOR FORTYFIVE ARE BROKEN DOWN BY PROJECTS. RECORDS FOR FORTYFOUR ARE NOT SEPARATED INTO PROJECTS WHICH NECESSITATES SEARCH OF AN ADDITIONAL EXTIMATES FOUR THOUSAND CARD TO SEGREGATE INDIVIDUALS EMPLOYED ON PROJECT S FIVE NAUGHT. MANY INDIVIDUALS WILL APPEAR ON BOTH FORTYFOUR AND FORTYFIVE LISTS, NECESSITATING ADDITIONAL ELIMINATION. ESTIMATE TWO AGENTS MINIMUM OF FIVE DAYS NECESSARY FOR SEARCH. NY WILL ASCERTAIN IF PERSONNEL LIST AVAILABLE FROM US NAVY WHO SUPERVISED PROJECT S FIVE NAUGHT AND SUTEL. ACTUAL SEARCH BEING HELD IN ABEYANCE PENDING RECEIPT OF INFO FROM NY. BOSTON ADVISED. U

ABBATICCHIO

65-15136-71

THIRD LAST LINELAA LAST WD SHD BE SUTEL

FEB 7 1950

END A IN O PLS

JA 6-55 PM OK FBI WA OVM


NY OK FBI NYC REOT

DISC

MR

J. Murphy

FILE # 65-15736
SUBJECT Klaus Fuchs
SERIAL 80 DATE 2/8/50
CONSISTING OF 3 PAGES

is exempt from disclosure, in its entirety,
under (b)(1) as it has been classified pursuant
to Executive Order 11652 as it contains
information which would disclose an intelligence
source. This serial bears the Classification
Officers number 

FEDERAL BUREAU OF INVESTIGATION

UNITED STATES DEPARTMENT OF JUSTICE

NEW YORK, NEW YORK
FEBRUARY 8, 1950

Transmit the following Teletype message to: CLEVELAND

URGENT

EMIL JULIUS KLAUS FUCHS, WAS., ESPIONAGE - R. PERSONNEL DEPT FERGUSON
CO. IS OBTAINING FULL LIST OF FERGUSON PEOPLE ASSIGNED S-FIFTY PROJECT.
DISCONTINUE EFFORTS TO OBTAIN THIS LIST FROM CLEVELAND OFFICE OF FERGUSON.

SCHEIDT

- ...MR. SCHEIDT
- ...MR. BELMONT
- ...MR. WHELAN
- ...MR. COLLIER
- ...MR. GRANVILLE
- ...MR. HUGHES
- ...MR. KENNEDY
- ...MR. LEVVIS
- ...MR. MARCHESSAULT
- ...MR. HANAN
- ...NIGHT SUPERVISOR
- ...MR. KING
- ...MR. TOOTH
- ...MR. WALSH
- ...MR. WOL
- ...CHIEF CLERK
- ...PROPERTY CLERK
- ...TRAINING UNIT

JRM:FJD
65-15136

Approved: Chap
Special Agent in Charge

Sent 10:28 M Per CH
65-15136-812

- MR. CATALOT
- MR. BELMONT
- MR. WHELAN
- MR. COLLIER
- MR. GRANVILLE
- MR. HUGHES
- MR. KENNEDY
- MR. LEVITS
- MR. MARCHESSA
- MR. HANAN
- MR. SUPER
- MR. KING
- MR. TUSHY
- MR. WALSH
- MR. WOHL
- CHIEF CLERK
- PROPERTY CLERK
- TRAINING UNIT

FBI CLEVELAND 2-8-50 12-20 AMXX PM EST JLG

SAC NEW YORK

URGENT

EMIL JULIUS KLAUS FUCHS, WAS, EXP. R. REURTELS FIVE FIFTYTHREE PM AND NINE NAUGHT ONE PM FEB. SEVEN INSTANT. UNABLE DETERMINE FROM URTELS IF YOU DESIRE ANY ACTION BY CLEVELAND TO ATTEMPT TO DETERMINE FROM H. K. FERGUSON CO. HERE THE LOCATION AND AUTHORSHIP OF THESIS IN QUESTION. ADVISE SPECIFIC ACTION DESIRED.

ABBATICCHIO

END

OK FBI NYC JJM

M

65-15136-84

F. B. I.

FEB - 8 1950

N. Y. C.

ROUTED TO *Murphy*

Federal Bureau of Investigation
United States Department of Justice
New York, New York

February 9, 1950

- MR. SCHEIDT
- MR. BELMONT
- MR. WHELAN
- MR. COLLIER
- MR. GRANVILLE
- MR. HUGHES
- MR. KENNEDY
- MR. LEVY
- MR. PARCELSAULT
- MR. ROY
- MR. TAVENOR
- MR. KING
- MR. TRACY
- MR. WALKER
- MR. WOHL
- CHIEF CLERK
- PROPERTY CLERK
- TRAINING UNIT

MEMO

TOP SECRET

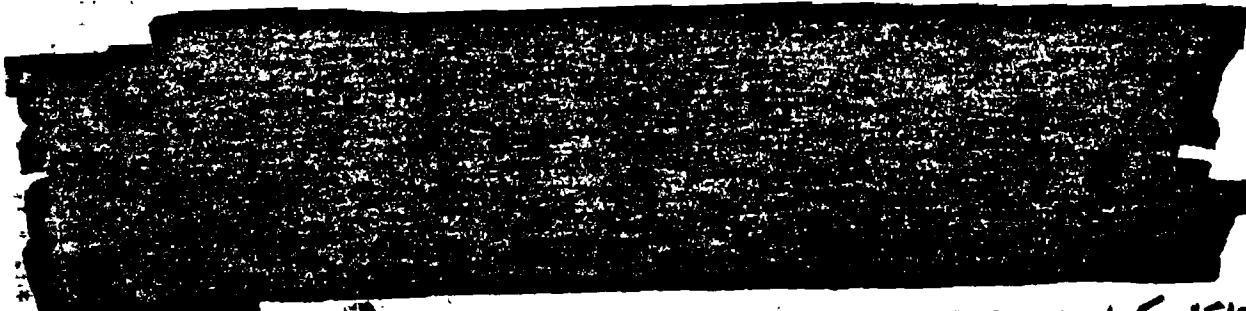
258 1, 2, 3
10/20/75

RE: EMIL FUCHS
ESPIONAGE - R

Reference is made to the memorandum of SA McCarville dated February 9, 1950 in this matter.

At 4:00 pm I called Mr. H. B. Fletcher of the Bureau to advise him that SA John R. Murphy and another agent had interviewed Mr. SAMUEL GOUDSMIT concerning the story related to him by Dr. KARL COHEN. Mr. GOUDSMIT confirmed the information previously furnished to us through [redacted] of CIA. Mr. GOUDSMIT advised that COHEN, with whom he is quite friendly, had informed him that in 1947, when FUCHS was in New York City, FUCHS called him for a luncheon engagement. This surprised COHEN somewhat as he did not feel he was on close terms with FUCHS; however, he went to lunch with FUCHS. After the luncheon engagement, COHEN was telephonically contacted by FUCHS who apparently was out of town and was advised that FUCHS had left his hat at the restaurant where they had lunch. FUCHS had called his acquaintances with whom he was staying on 111th Street, but they were reluctant to go to the restaurant to pick up the hat which FUCHS had borrowed from these acquaintances. FUCHS requested COHEN to go to the restaurant and get the hat and deliver it up to these acquaintances on 111th Street. COHEN did this. COHEN cannot remember the exact address on 111th Street, but told GOUDSMIT he could pick out the house.

After the FUCHS story came out in the papers, COHEN became somewhat worried that he had been used as an intermediary by FUCHS in the delivery of this hat to his acquaintances on 111th Street. COHEN indicated to GOUDSMIT that he wanted to furnish this information to appropriate authorities. GOUDSMIT advised that COHEN would be glad to furnish the information to FBI agents. GOUDSMIT recommended that the agents contact COHEN at his home rather than where he works.



65-15185
MIB:CTC
65-15136

A. H. BELMONT 65-15136-91
ASAC

FBI - NEW YORK
FEB 9 1950

J.R. Murphy

FILE DESCRIPTION

NEW YORK FILE

SUBJECT Emil Julius Klaus Fuchs

FILE NO. 65-15136

VOLUME NO. 2

SERIALS 96

Thru

283

NOTICE

THE BEST COPIES OBTAINABLE ARE INCLUDED IN THE REPRODUCTION OF THE FILE. PAGES INCLUDED THAT ARE BLURRED, LIGHT OR OTHERWISE DIFFICULT TO READ ARE THE RESULT OF THE CONDITION AND OR COLOR OF THE ORIGINALS PROVIDED. THESE ARE THE BEST COPIES AVAILABLE.

File No: 65-15136Re: KLAUS FUCHSDate: 12/77
(month/year)

Serial	Date	Description (Type of communication, to, from)	No. of Pages		*	Exemptions used or, to whom referred (Identify statute if (b)(3) cited)
			Actual	Released		
96	2/10/50	NY TELETYPE to HQ	2	0	YES	Bundle 65-58805
97	2/10/50	NY TELETYPE to HQ NK	4	0	YES	Bundle 65-58805
98	2/10/50	NY TELETYPE to HQ WFO	2	0	YES	Bundle 65-58805
99	2/10/50	KX teletype to HQ & NY	2	0	YES	Bundle 65-58805
100	2/10/50	CV teletype to HQ NY WFO	4	0	YES	Bundle 65-58805
101	2/10/50	NY letter to HQ	1	0	YES	Bundle 65-58805
102	2/10/50	SA NY MEMO to FILE	1	1	NO	
103	2/10/50	NY letter to HQ	1	0	YES	Bundle 65-58805
104	2/10/50	SF teletype to HQ WFO LA	1	0	YES	Bundle 65-58805
105	2/10/50	NY teletype to HQ	1	0	YES	Bundle 65-58805
106	2/11/50	SA NY Memo to file	1	1	NO	
106a	2/10/50	NY letter to HQ Capt: KRISTEL FUCHS MANNMAN	1	1	YES	Proven - 3rd party

*Designated to or from Bureau and/or Albuquerque, New York

File No: 65-15136Re: Klaus FuchsDate: 12/77
(month/year)

Serial	Date	Description (Type of communication, to, from)	No. of Pages		*	Exemptions used or, to whom referred (Identify statute if (b)(3) cited)
			Actual	Released		
107	2/10/50	WFO Report to HQ	7	0	Yes	Bundle 65-58805
108	2/10/50	AQ letter to HQ	3	0	Yes	Bundle 65-58805
109	2/11/50	NY teletype to HQ	3	0	Yes	Bundle 65-58805
110	2/11/50	NY SA Memo to file	5	5	No	b1
110a	2/11/50	DN SA letter to HQ	1	0	Yes	Bundle 65-58805
111	2/13/50	NY letter to HQ	1	0	Yes	Bundle 65-58805
112	2/13/50	SA NY Memo to file	1	0	No	
113	2/13/50	WFO teletype to HQ + NY	2	0	Yes	Bundle 65-58805
114	2/13/50	WFO teletype to HQ NY NK	2	0	Yes	Bundle 65-58805
115	2/13/50	HQ teletype to NY BS	1	0	Yes	Bundle 65-58805
116	2/13/50	HQ teletype to NY BS	1	0	Yes	Bundle 65-58805
117	2/13/50	HQ teletype to NY BS	1	0	Yes	Bundle 65-58805

*Designated to or from Bureau and/or Albuquerque, New York

File No: 65-15136

Re:

Klaus Fuchs

Date:

12/77
(month/year)

Serial	Date	Description (Type of communication, to, from)	No. of Pages		*	Exemptions used or, to whom referred (Identify statute if (b)(3) cited)
			Actual	Released		
118	2/13/50	CV TX NY teletype to HQ WFO	2	0	Yes	Bufile 65-58805
119	2/13/50	NY letter to HQ	1	0	Yes	Bufile 65-58805
120	2/13/50	copy to NY CG letter to HQ	1	0	Yes	Bufile 65-58805
121	2/13/50	NY teletype to HQ	1	0	Yes	Bufile 65-58805
122	2/13/50	HQ teletype to NY	1	0	Yes	Bufile 65-58805
123	2/14/50	NY letter to HQ	7	0	Yes	Bufile 65-58805
124	2/14/50	NY teletype to HQ	4	0	Yes	Bufile 65-58805
125	2/14/50	CV teletype to HQ NY WFO RS	1	0	Yes	Bufile 65-58805
125a	2/14/50	SA NY Memo to file	1	1	No	
126	2/14/50	copy to NY CI letter to HQ	1	0	Yes	Bufile 65-58805
127	2/14/50	NY teletype to HQ + RS	1	0	Yes	Bufile 65-58805
128	2/15/50	NY teletype to HQ	1	0	Yes	Bufile 65-58805

*Designated to or from Bureau and/or Albuquerque, New York

File No: 65-15136

Re: Klaus Fuchs

Date: 12/77

(month/year)

Serial	Date	Description (Type of communication, to, from)	No. of Pages		*	Exemptions used or, to whom referred (Identify statute if (b)(3) cited)
			Actual	Released		
129	2/15/50	BS teletype to NY ^{HQ} NK	1	0	Yes	Bufile 65-58805
130	2/15/50	KX teletype to HQ NY ^{NFO}	1	0	Yes	Bufile 65-58805
131	2/15/50	SF teletype to NY LA ^{HQ BS -FO}	1	0	Yes	Bufile 65-58805
132	2/15/50	HQ teletype to NY 'S	1	0	Yes	Bufile 65-58805
133	2/15/50	NY teletype to HQ	1	0	Yes	Bufile 65-58805
134	2/15/50	SH letter to NY	2	2	No	
135	2/16/50	NY letter to HQ	1	0	Yes	Bufile 65-58805
136	2/16/50	NY letter to HQ	1	0	Yes	Bufile 65-58805
137	2/16/50	NY letter to HQ	12	0	Yes	Bufile 65-58805
138	2/16/50	HQ letter to B ^{copy N NY}	1	0	Yes	Bufile 65-58805
139	2/17/50	KX letter to HQ ^{copy to NY}	1	0	Yes	Bufile 65-58805
140	2/16/50	NY teletype to HQ	1	0	Yes	Bufile 65-58805

*Designated to or from Bureau and/or Albuquerque, New York

File No:

65-15136

Re:

Klaus Fuchs

Date:

12/77

(month/year)

Serial	Date	Description (Type of communication, to, from)	No. of Pages		*	Exemptions used or, to whom referred (Identify statute if (b)(3) cited)
			Actual	Released		
141	2/16/50	HA teletype to NY BS	1	0	Yes	Bufile 65-58805
142	2/16/50	HA teletype to NY	1	0	Yes	Bufile 65-58805
143	2/16/50	SF teletype to NY BS HQ LA	1	0	Yes	Bufile 65-58805
144	2/16/50	BS teletype to NY HQ	2	0	Yes	Bufile 65-58805
145	2/16/50	HA teletype to NY BS	1	0	Yes	Bufile 65-58805
146	2/16/50	BS teletype to NY HQ	3	0	Yes	Bufile 65-58805
147	2/17/50	NY teletype to BS	1	0	No	b1
148	2/17/50	NY teletype to HQ	2	0	Yes	Bufile 65-58805
149	2/17/50	NY teletype to NK	1	1	No	
150	2/17/50	BS teletype to HQ WFO NY	3	0	Yes	Bufile 65-58805
151	2/17/50	NY teletype to HQ	1	0	Yes	Bufile 65-58805
152	2/17/50	HA teletype to NY BS	1	0	Yes	Bufile 65-58805

*Designated to or from Bureau and/or Albuquerque, New York

File No:

65-15136

Re:

KLAUS FUCHS

Date:

12/77

(month/year)

Serial	Date	Description (Type of communication, to, from)	No. of Pages		*	Exemptions used or, to whom referred (Identify statute if (b)(3) cited)
			Actual	Released		
153	2/17/50	NK teletype to HQ NY	2	0	Yes	Bufile 65-58805
154	2/17/50	HQ teletype to NY	1	0	Yes	Bufile 65-58805
155	2/17/50	WFO teletype to HQ NY	1	0	Yes	Bufile 65-58805
156	2/17/50	BS teletype to HQ NY	1	0	Yes	Bufile 65-58805
157	2/17/50	HQ teletype to NY BS PH	1	0	Yes	Bufile 65-58805
158	2/18/50	BS teletype to NY HQ PH	1	0	Yes	Bufile 65-58805
159	2/18/50	NY teletype to HQ + NK	1	0	Yes	Bufile 65-58805
160	2/18/50	NK teletype to HQ NY BS	2	0	Yes	Bufile 65-58805
161	2/17/50	HQ teletype to NY NK BS	1	0	Yes	Bufile 65-58805
162	2/19/50	NY teletype to HQ	1	0	Yes	Bufile 65-58805
163	2/19/50	NY teletype to HQ AL	1	0	Yes	Bufile 65-58805
164	2/15/50	KX Report copy to NY to HQ	12	0	Yes	Bufile 65-58805

File No: 65-15136Re: KLAUS FUCHSDate: 12/77

(month/year)

Serial	Date	Description (Type of communication, to, from)	No. of Pages		W	Exemptions used or, to whom referred (Identify statute if (b)(3) cited)
			Actual	Released		
165	4/11/50	HA letter to NY	1	0	Yes	Bufile 65-58805
166	2/18/50	AT Report to HQ ^{copy to NY}	10	0	Yes	Bufile 65-58805
167	2/15/50	SP Report to HQ ^{copy to NY}	5	0	Yes	Bufile 65-58805
167	2/15/50	copy of Report	5	0	Yes	Bufile 65-58805
168	2/17/50	WFO letter to HQ ^{copy to NY}	1	0	YES	Bufile 65-58805
169	2/17/50	CV Report to HQ ^{copy to NY}	24	0	YES	Bufile 65-58805
170	2/17/50	CV letter to HQ ^{copy to NY}	1	0	YES	Bufile 65-58805
171	2/15/50	SF letter to HQ ^{copy to NY}	5	0	YES	Bufile 65-58805
172	2/16/50	ITQ letter to AT ^{copy to NY}	3	0	Yes	Bufile 65-58805
173	2/17/50	KX letter to HQ ^{copy to NY}	1	0	YES	Bufile 65-58805
174	2/20/50	PH teletype to HQ NY BS	1	0	Yes	Bufile 65-58805
175	2/20/50	WFO teletype to HQ NY	1	0	Yes	Bufile 65-58805

*Designated to or from Bureau and/or Albuquerque, New York

Serial	Date	Description (Type of communication, to, from)	No. of Pages		*	Exemptions used or, to whom referred (Identify statute if (b)(3) cited)
			Actual	Released		
176	2/17/50	HQ teletype to ^{NY} BS WFO	3	0	Yes	Bufile 65-58805
177	2/20/50	NY letter to HQ	19	0	Yes	Bufile 65-58805
178	2/16/50	^{copy 3rd party} BS letter to HQ ^{copy to NY}	3	3	Yes	bl Process - 3rd party
179	2/16/50	^{copy to NY} HQ letter to BS	1	0	Yes	Bufile 65-58805
180	2/17/50	NY SA Memo to Dale	1	0	No	bl
181	2/16/50	^{copy to NY} NK Report to HQ	6	0	Yes	Bufile 65-58805
182	2/20/50	^{copy to NY} WFO letter to HQ	1	0	Yes	Bufile 65-58805
183	2/20/50	^{copy to NY} WFO letter to HQ	1	0	Yes	Bufile 65-58805
184	2/20/50	BS teletype to ^{HQ} NY	1	0	Yes	Bufile 65-58805
185	2/20/50	NY teletype to HQ	1	0	Yes	Bufile 65-58805
186	2/20/50	^{BS, WFO} NY teletype to HQ	2	0	Yes	Bufile 65-58805
187	2/20/50	^{copy to NY} HQ letter to AL	1	0	Yes	Bufile 65-58805

*Designated to or from Bureau and/or Albuquerque, New York

File No: 65-15136Re: KLAUS FUCHSDate: 12/77
(month/year)

Serial	Date	Description (Type of communication, to, from)	No. of Pages		*	Exemptions used or, to whom referred (Identify statute if (b)(3) cited)
			Actual	Released		
188	2/21/50	NY letter to HQ	1	0	YES	ser 930 (279-9/1/50) BUFILE 65-58805
189	2/21/50	NY letter to HQ	1	0	YES	ser 871 (279-9/1/50) BUFILE 65-58805
190	2/21/50	NY teletype to HQ SF	1	0	YES	-352 F1108 BUFILE 65-58805
191	2/21/50	NY teletype HQ IP	1	0	YES	Processed F2293 BUFILE 65-58805
192	2/21/50	NY teletype to HQ CG KX	1	1	YES	Processed BUFILE 65-58805
193	2/21/50	NY teletype to HQ AQ	1	1	YES	Processed F2293 BUFILE 65-58805
194	2/21/50	NY teletype to HQ NY AQ	2	0	YES	BUFILE 65-58805
195	2/20/50	AQ letter to HQ	4	0	YES	BUFILE 65-58805
196	2/20/50	HQ letter to PH copy NY NY	1	1	YES	Processed BUFILE 65-58805
197	2/21/50	HQ teletype to BS NY	1	0	YES	BUFILE 65-58805
198	2/21/50	IP teletype to HQ NY BS	2	0	YES	BUFILE 65-58805
199	2/22/50	SF teletype to HQ WFO BS NY LA PH	4	0	YES	BUFILE 65-58805

*Designated to or from Bureau and/or Albuquerque, New York

File No: 65-15136Re: KEAUS FUCHSDate: 12/77

(month/year)

Serial	Date	Description (Type of communication, to, from)	No. of Pages		*	Exemptions used or, to whom referred (Identify statute if (b)(3) cited)
			Actual	Released		
200	2/20/50	HQ letter to NY	1	0	YES	BuFile 65-58805
201	2/21/50	^{copy to NY} KX letter to HQ	3	0	YES	BuFile 65-58805
202	2/23/50	HQ teletype to BS + NY	1	0	YES	BuFile 65-58805
203	2/23/50	PH teletype to HQ + NY	1	0	YES	BuFile 65-58805
204	2/24/50	PH teletype to NY	1	1	NO	
205	2/23/50	^{BS WFO} NY teletype to HQ ^{PH}	2	0	YES	BuFile 65-58805
206	2/23/50	^{PH BS} NY teletype to HQ	1	0	YES	BuFile 65-58805
207	2/23/50	NY letter to HQ	5	0	YES	BuFile 65-58805
208	2/23/50	NY letter to HQ	4	0	YES	Supp 65-58805
209	2/23/50	HQ teletype to NY + BS	1	0	YES	BuFile 65-58805
210	2/23/50	NY letter to HQ	1	0	YES	BuFile 65-58805
211	2/23/50	NY letter to HQ	1	0	YES	BuFile 65-58805

* Designated to or from Bureau and/or Albuquerque, New York

File No: 65-15136Re: KLAUS FUCHSDate: 12/77
(month/year)

Serial	Date	Description (Type of communication, to, from)	No. of Pages		*	Exemptions used or, to whom referred (Identify statute if (b)(3) cited)
			Actual	Released		
212	2/21/50	copy to NY HQ letter to BS	1	0	yes	Bufile 65-58805
213	2/21/50	copy to NY KX Report to HQ	4	0	Yes	Bufile 65-58805
214	2/21/50	copy to NY HQ letter to PH	1	0	Yes	Bufile 65-58805
215	2/21/50	EXCEPT FROM SAC letter #14 copy: third party	1	1	No	
216	2/22/50	BS Report to HQ	29	0	Yes	Bufile 65-58805
217	2/23/50	PH teletype to HQ ^{NY} BS	1	0	Yes	Bufile 65-58805
218	2/23/50	BS letter to HQ	2	0	Yes	Bufile 65-58805
219	2/23/50	copy to NY WFO letter to HQ	1	0	Yes	Bufile 65-58805
220	2/24/50	copy to NY BS teletype to HQ ^{NY NK}	2	0	Yes	Bufile 65-58805
221	2/24/50	PH teletype to HQ ^{BS} NY	1	0	Yes	Bufile 65-58805
222	2/24/50	HQ teletype to BS ^{NY}	1	0	Yes	Bufile 65-58805
223	2/24/50	HQ teletype to NY ^{PH}	1	0	Yes	Bufile 65-58805

*Designated to or from Bureau and/or Albuquerque, New York

File No: 65-15136

Re: KLAUS FUCHS

Date: 12/77
(month/year)

Serial	Date	Description (Type of communication, to, from)	No. of Pages		*	Exemptions used or, to whom referred (Identify statute if (b)(3) cited)
			Actual	Released		
224	2/24/50	HQ teletype to NY	1	0	YES	Bufile 65-58805
225	2/23/50	HQ teletype to NY	1	0	YES	Bufile 65-58805
226	2/24/50	NY letter to HQ	1	0	YES	Bufile 65-58805
227	2/24/50	NY letter to HQ	1	0	Yes	Bufile 65-58805
228	2/24/50	SA NY letter to ^{NATIONAL CITY} BANK of NY	1	1	No	b7C b7D
229	2/24/50	NY teletype to HQ PIT	1	0	YES	Bufile 65-58805
230	2/5/50	CI teletype to HQ NY	1	0	YES	Bufile 65-58805
231	2/25/50	NY teletype to HQ BS AL	1	0	YES	Bufile 65-58805
232	2/25/50	NY teletype to HQ-BS-CV-CI-IP ^{BA-PG-WFO-CG-ME NH-NK-AL-BU-PH}	2	0	YES	Bufile Processed 65-58805
233	2/24/50	SF teletype to HQ NY BS	1	0	YES	Bufile Processed 65-58805
234	2/25/50	NY letter to HQ	1	0	Yes	Bufile 65-58805
235	2/23/50	HQ letter to NY	1	0	Yes	Bufile 65-58805

File No: 65-15136

Re:

KLAUS

FUCHS

Date:

12/77
(month/year)

Serial	Date	Description (Type of communication, to, from)	No. of Pages		*	Exemptions used or, to whom referred (Identify statute if (b)(3) cited)
			Actual	Released		
236	2/23/50	copy to NY SF letter to HQ	1	0	Yes	Bufile 65-58805
237	2/24/50	copy to NY SF letter to HQ	5	0	Yes	Bufile 65-58805
238	2/24/50	copy to NY CI letter to HQ	1	0	Yes	Bufile 65-58805
239	2/24/50	copy to NY NK letter to HQ	1	0	Yes	Bufile 65-58805
240	2/24/50	copy to NY IP letter to HQ	1	0	Yes	Bufile 65-58805
241	2/24/50	LA SA letter to HQ	2	0	Yes	Bufile 65-58805
242	2/25/50	copy to NY KX letter to HQ	1	0	Yes	Bufile 65-58805
243	2/25/50	copy to NY IP letter to HQ	1	0	Yes	Bufile 65-58805
244	2/27/50	HQ teletype to NY + BS	1	0	Yes	Bufile 65-58805
245	2/27/50	AL BS CV teletype to HQ NY	2	0	Yes	Bufile 65-58805
246	2/27/50	NY teletype to HQ	1	0	Yes	Bufile 65-58805
247	2/27/50	HQ CI teletype to NY-BS	2	0	Yes	Bufile 65-58805

*Designated to or From Bureau and/or Albuquerque, New York

Serial	Date	Description (Type of communication, to, from)	No. of Pages		*	Exemptions used or, to whom referred (Identify statute if (b)(3) cited)
			Actual	Released		
248	2/27/50	NK teletype to HQ ^{NY} -BS	1	0	Yes	Ref file 65-58805
249	2/27/50	IP teletype to HQ ^{NY} -BS	1	0	Yes	Ref file 65-58805
250	2/22/50	HQ teletype to PH-NY	1	0	Yes	Ref file 65-58805
251	2/27/50	NH teletype to HQ ^{NY} -BS	1	0	Yes	Ref file 65-58805
252	2/27/50	BS teletype to HQ-NY	2	0	Yes	Ref file 65-58805
253	2/27/50	BS teletype to HQ-NY	2	0	Yes	Ref file 65-58805
254	2/27/50	BS teletype to HQ-NY	1	0	Yes	Ref file 65-58805
255	2/27/50	PG teletype to HQ ^{NY} -BS	1	0	Yes	Ref file 65-58805
256	2/27/50	NY letter to HQ	1	0	Yes	Ref file 65-58805
257	2/24/50	HQ letter to NY	1	0	Yes	Ref file 65-58805
258	2/24/50	HQ letter to NY	1	0	Yes	Ref file 65-58805
259	2/27/50	HQ letter to NY	1	0	Yes	Ref file 65-58805

File No: 65-15136

Re: KLAUS FUCHS

Date: 12/77
(month/year)

Serial	Date	Description (Type of communication, to, from)	No. of Pages		*	Exemptions used or, to whom referred (Identify statute if (b)(3) cited)
			Actual	Released		
260	2/27/50	copy to NY SA letter to HQ	2	0	Yes	Byfile 65-58805
261	2/27/50	copy to NY PH letter to HQ	1	0	Yes	Byfile 65-58805
261A	2/27/50	copy to NY PG letter to HQ	2	0	Yes	Byfile 65-58805
262	2/24/50	copy to NY HQ letter to BS	1	0	Yes	Byfile 65-58805
263	2/28/50	NY-BS PH teletype to HQ	1	0	Yes	Byfile 65-58805
264	2/27/50	NY teletype to HQ-BS-CI-AT	2	0	Yes	Byfile 65-58805
265	2/26/50	IP letter to HQ	2	0	Yes	Byfile 65-58805
265A	2/27/50	copy: 3rd Party NY letter to HQ	2	2	Yes	Byfile 65-58805 3rd party
266	2/28/50	BS teletype to HQ NY	1	0	Yes	Byfile 65-58805
267	2/28/50	NY letter to HQ	1	0	Yes	Byfile 65-58805
268	2/28/50	NY teletype to HQ-BS	1	0	Yes	Byfile 65-58805
269	2/28/50	NY teletype to HQ-BS	2	0	Yes	Byfile 65-58805

*Designated to or from Bureau and/or Albuquerque, New York

File No: 65-15136

Re: KLAUS FUCHS

Date: 12/79
(month/year)

Serial	Date	Description (Type of communication, to, from)	No. of Pages		*	Exemptions used or, to whom referred (Identify statute if (b)(3) cited)
			Actual	Released		
270	2/27/50	copy to NY IP letter to HQ	1	0	Yes	Bufile 65-58805
271	2/27/50	copy to NY WFO letter to HQ	8	0	Yes	Bufile 65-58805
272	2/28/50	copy to NY PH letter to HQ	2	0	Yes	Bufile 65-58805
273	2/27/50	copy to NY CV SA letter to HQ	2	0	Yes	Bufile 65-58805
274	2/28/50	BS letter to NY	3	3	No	b1
275	2/28/50	copy to NY PH letter to HQ	5	0	Yes	Bufile 65-58805
276	2/28/50	copy to NY CG letter to HQ	1	0	Yes	Bufile 65-58805
277	3/1/50	NY letter to HQ	1	0	Yes	Bufile 65-58805
278	2/28/50	copy to NY NK Report to HQ	5	0	Yes	Bufile 65-58805
279	3/1/50	Bu Report to HQ	4	0	Yes	Bufile 65-58805
280	3/1/50	MI teletype to HQ-NY	1	0	Yes	Bufile 65-58805
281	3/1/50	HQ teletype to BS-NY	1	0	Yes	Bufile 65-58805

*Designated to or from Bureau and/or Albuquerque, New York

Serial	Date	Description (Type of communication, to, from)	No. of Pages		*	Exemptions used or, to whom referred (Identify statute if (b)(3) cited)
			Actual	Released		
282	3/1/50	NY teletype to HQ BS-NY-NK	3	0	Yes	By file 65-58805
283	3/1/50	BS teletype to HQ-NY	1	0	Yes	By file 65-58805

U. S. Department of Justice

(MATERIAL MUST NOT BE REMOVED FROM OR ADDED TO THIS FILE)

FEDERAL BUREAU

of

INVESTIGATION

Bureau File Number

65-15136

96-2823

Subs.
Sheet Cotton

Closed

Federal Bureau of Investigation
United States Department of Justice
New York, New York

February 10, 1950

MR. BELMONT	
MR. CLEGG	
MR. GLAVIN	
MR. LADD	
MR. NICHOLS	
MR. ROSEN	
MR. TRACY	
MR. HARBO	
MR. MOHR	
MR. WINTERROWD	
TELE. ROOM	
MR. HOLLOMAN	
MISS GANDY	

MEMO

RE: EMIL FUCHS
ESPIONAGE - R

This afternoon, Mr. H. B. Fletcher of the Bureau advised that the Director had informed him that there is "something new" in this case which he had seen in a New York newspaper today which article contained 13 paragraphs. Mr. Fletcher asked if we could locate this newspaper. I advised him that all the New York papers today carried articles considerably longer than 13 paragraphs but that I would check further to see if the article he had in mind could be located.

A. J. TUOHY
Supervisor

Article located - sent to
Wash with SA Miller

2/10/50

AT

AT:CTC

65-15136-102

FBI - NEW YORK
FEB 10 1950

Federal Bureau of Investigation
United States Department of Justice
New York 7, New York

February 11, 1950

MEMO

Re: FOUCASE
ESPIONAGE - R

INFORMATION FURNISHED BY KRISTEL KLAUS HEIERMAN

On the afternoon of February 11, 1950, Mr. H. B. FLETCHER of the Bureau advised that Boston Agents, during interviews with the sister of Dr. FUCHS and her husband, have come up with the following information:

In February 1949, an unknown man came to their home on three occasions, attempting to contact Dr. FUCHS. On one of these occasions he did see Dr. FUCHS. The sister and her husband gave the following description of this unknown individual:

Height:	5' 8"
Hair:	Dark, receding hairline, impression of baldness
Features:	Fine
Face:	Full
Build:	Stocky
Dress:	Conservative, wore glasses
Manner:	Unobtrusive
Age:	In the 30's according to the husband; in the 40's according to Dr. FUCHS' sister.

As they recalled it, the first three letters of the name of the unknown individual were R O B. The husband thought the name was ROBBIS or possibly ROBERTS or ROBINSON.

During his conversation with them, the unknown individual mentioned the City of Philadelphia, and commented on the amount of snow in Buffalo. He played with the children and handled them well, showing familiarity with children. Dr. FUCHS' sister believes that the unknown individual had two children less than four years of age. They recall that he mentioned his wife. He gave them a book entitled "Mrs. Palmer's Honey". Boston Agents have secured this book but it does not appear to be of value.

AIB:ENC
65-15136

65-1536-106
FBI - NEW YORK
A. H. BELMONT, ASAC

J. R. Murphy

Director, FBI

February 10, 1950

SAC, New York

BRISTEL FUCHS HEINEMAN, et al
ESPIONAGE - R

Re: airtel to New York 2/7/50.

Pursuant to the request in airtel, there are enclosed herewith six copies of the photograph of above named subject for the Bureau, three copies for the Washington Field and three copies for Boston.

The unused portion of the film pack is being returned to Boston as an enclosure.

Six copies are being retained for the New York file.

Enc. Bureau (6)
NYO (3)
Boston (4)

JRM:ll
65-15136-7
cc-6 - 136 ✓

RZC:ll RECD MAIL

at
65-15136-106 R

Federal Bureau of Investigation
United States Department of Justice
New York 7, New York

February 13, 1950

MEMO:

RE: FOOCASE
ESPIONAGE

[REDACTED]

(b)(1)

[REDACTED]

(b)(1)

[REDACTED]

(b)(1)

[REDACTED]

(b)(1)

[REDACTED]

(b)(1)

[REDACTED]

(b)(1)

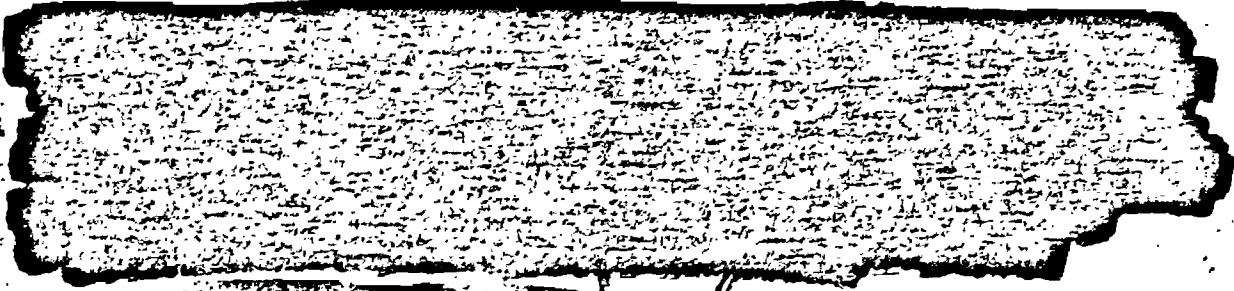
[REDACTED]

(b)(1)

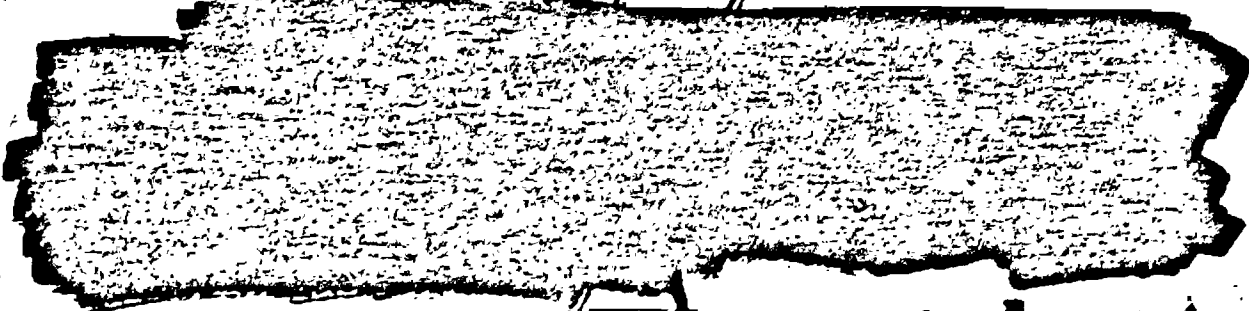
JTB:JTB
65-15136

65-15136-110
FBI NEW YORK
JRM

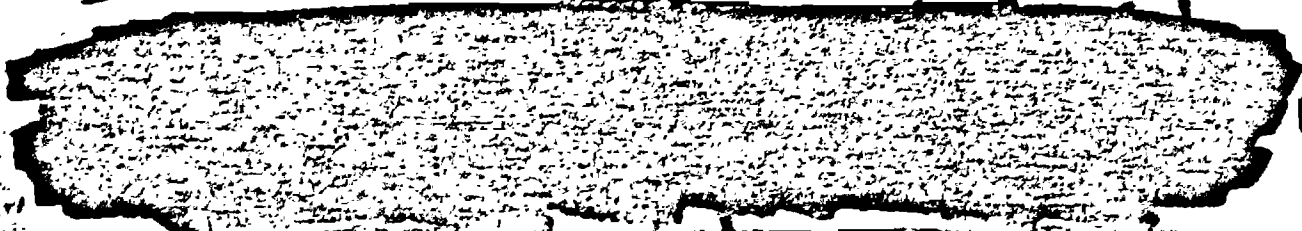
NYO
NY 65-15136



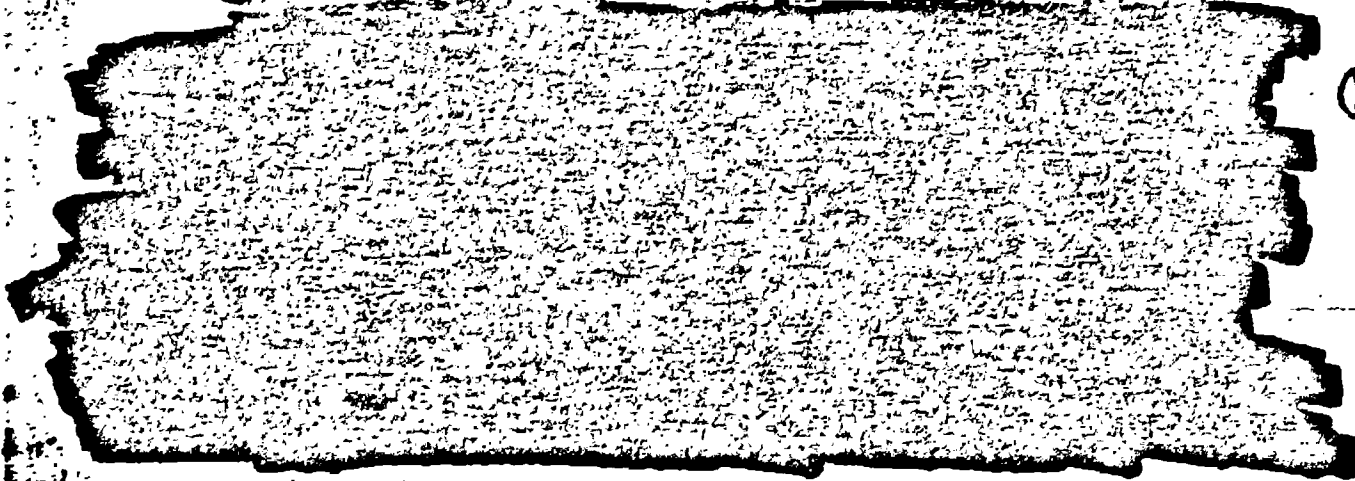
(b)(1)



(b)(1)



(b)(1)



(b)(1)

MEMO
NY 65-15136

[REDACTED]

(b)(1)

[REDACTED]

(b)(1)

[REDACTED]

(b)(1)

1

MEMO
NY 65-15136

(b)(1)

(b)(1)

(b)(1)

6

FIELD
NY 65-15136

[REDACTED]

(b)(1)

[REDACTED]

(b)(1)

(b)(1)

JOHN R. MURPHY SA

6



United States Department of Justice
Federal Bureau of Investigation

2/13

Mr. Tolson	
Mr. E. A. Tamm	
Mr. Clegg	
Mr. Glavin	
Mr. Ladd	
Mr. Nichols	
Mr. Rosen	
Mr. Tracy	
Mr. Carson	
Mr. Egan	
Mr. Gurnea	
Mr. Harbo	
Mr. Hendon	
Mr. Pennington	
Mr. Quinn	
Mr. Nease	
Miss Gandy	

IN REPLY, PLEASE REFER TO
FILE NO. _____

New York, N.Y.
February 13, 1950

MEMO

RE: FOCCASE
ZSP-R

Mr. T. Avery of Immigration, called at 11:55 A.M. today and advised that MAURICE WALKIN, who is presently working for INS, had received a call from LARRY KERLEY who advised him that the "Journal American" is presently working on a story in connection with the FUCHS case as follows:

"A girl, a senior at Columbia, whose father is a merchant marine captain, introduced her to a Finn believed to be a Communist. The Finn took her to Greenwich Village to visit a Russian professor who has been in the U.S. eight or nine months and who is married to an Egyptian. A couple of weeks ago while she was there FUCHS called the unidentified professor from London. They had a conversation and then the professor told FUCHS to call him back later. FUCHS said he couldn't because they were after him because of his father."

KERLEY said the "Journal American" had made some checks of long distance telephone calls and found some corroboration.

According to Mr. Avery, it appeared that the "Journal American" was trying to locate the girl and interview her concerning this matter.

ROBERT B. GRANVILLE, SA

65-15136
RRG:IM

See letter to Bureau 2-13-50

65-15136-1171

F. B. I.
FEB 13 1950
N. Y. C.

il



United States Department of Justice
 Federal Bureau of Investigation
 New York - New York

W

SEARCHED _____
 INDEXED _____
 SERIALIZED _____
 FILED _____
 FEB 11 1950
 DIVISION _____
 UNIT _____

February 11, 1950

MEMORANDUM

While at Governors Island shortly before noon today, the following came over their news ticker:

"The Soviet Union is telling its citizens that the FBI is the center of a police terror organization. Such charges began February 7th or shortly after the arrest of Dr. Klaus E. J. Fuchs, British physicist, by Scotland Yard, which had been tipped by the FBI that he had fed atomic information to the Russians. It followed by 19 days a charge by Clifford J. Durr, President of the National Lawyers Guild, that the FBI is a political police. Foreign broadcast information service monitored a Soviet home service talk February 7th in which a commentator called "Anadin" referred to the FBI as center of a police terror organization in this country. He told his listeners the FBI has been turned into an organization for intimidating the man in the street by means of all forms of violence, blackmail, terror and other police measures."

JOHN DIXSON
 Special Agent

JD:gu

65-15136-125A

FEB 11 1950

Handwritten initials and signatures

McCarthy
7-11
MEMORANDUM

February 15, 1950

To : Mr. T. Avery, Assistant Chief, Investigations Section,
New York, New York

From : John T. Sealey, Investigator

Subject: DR. FUCHS

K
Pursuant to your instructions, the undersigned interviewed Larry Curley, reporter for the New York "Journal American" located at 720 South Street, New York City on February 14, 1950. Mr. Curley stated that on February 4, 1950, "Red" Moran, night editor of the paper, was on duty at the City Desk and received a telephone call from a woman who refused to give her name, but who stated that her father was a Captain in the merchant marine and through him, she had been introduced to a Finnish seaman, with whom she had "dated" occasionally.

Shortly before Dr. Fuchs' arrest in London, in the company of this seaman, she visited a person whom she described as a "Russian professor" with a "beautiful Egyptian wife" who resided in an apartment in the vicinity of 14th Street, in New York City. She was unable to recall the name of the professor but stated that she believed he had been in the United States for only about eight months.

Upon entering the apartment, she was introduced to five or six other people present, whose names were unknown to Curley, and then noticed that a message had been left on the telephone table in the apartment, advising the professor that a trans-Atlantic telephone call had been put in to his number from London.

Sometime later the call came in and from the conversation that she overheard, she was certain that the call came from Dr. Fuchs in London. The professor told Fuchs that he could not talk to him at that time because he had guests present. The woman told Mr. Moran that from the short conversation between the professor and Dr. Fuchs, she received the impression that the professor was a superior to Dr. Fuchs.

Although urged by Mr. Moran to do so, she refused to identify herself further, other than to say that she was a student at Columbia University and that as an American citizen, she felt it her duty to report the matter to someone who could follow it up. Mr. Moran gave her both his name and that of the man who relieved him (Mr. Curley believed his name to be Crowley) and asked her to call again to discuss the subject further.

65-15136-137
FBI - NEW YORK
FBI
J. R. Murphy

To : Mr. T. Avery

On Sunday, February 5, 1950, she again called Mr. Moran and he assured her that if she would meet a representative of the paper, no attempt would be made to ascertain her identity and with this assurance she said that she would think it over and call again.

On Monday, February 6, 1950, she called the paper and talked to Mr. Crowley (?) and told him that she thought she could find the apartment if she were taken to the general vicinity. She told Mr. Crowley (?) that she would again call the following day, February 7, and arrange a meeting place.

No call was received on February 7, and nothing further was done until Saturday, February 11, 1950, when at the request of Mr. Curley, a "box advertisement" was placed in the paper requesting her to call again. That afternoon, Mr. Schoenstein, also an editor of the paper, received a call from her and then she stated that her father had told her to avoid getting mixed up in such a case, inasmuch as it might interfere with her studies at Columbia and her graduation, which she inferred, was to be in the near future. Nothing further was heard from her. Mr. Curley stated that he spoke to all of those who received the telephone calls and that they were all of the opinion that the person calling was definitely not a "crackpot".

Mr. Curley also informed the undersigned that several months ago, a call was received from a man, who stated that he was employed in an apartment house on the upper west side and would be willing to furnish the paper with a story concerning "Dr. Yuchs' girl friend", providing he was paid \$300.00 inasmuch as he was certain to lose his job once the details of the story became known. While the person who received the call endeavored to obtain authority to pay the amount, the caller hung up and nothing further was heard from him. It will be noted that the call was made several months before Dr. Yuchs' arrest.

Mr. Curley asked the undersigned to endeavor to search the records of this office to see if any trace of the aforementioned Russian professor could be found and he promised that if any further information was received by him, he would transmit it to this office immediately.

In the opinion of the undersigned, more detailed information concerning the matter can be obtained from the individuals named in this report who actually received these telephone calls.


JOHN T. SOLEY
Investigator

FEDERAL BUREAU OF INVESTIGATION

NEW YORK, NEW YORK

UNITED STATES DEPARTMENT OF JUSTICE FEBRUARY 17, 1950

Transmit the following Teletype message to: NEWARK

URGENT

FOOCASE, ESPIONAGE DASH R. RE BOSTON LETTER FEBRUARY SIXTEEN LAST.
DISREGARD REQUEST TO OBTAIN PHOTOGRAPH OF WANSON BENEDICT. NY HAS
FORWARDED SAME TO BUREAU AND BOSTON.

SCHIEDT

SEARCHED	INDEXED
SERIALIZED	FILED
FEB 17 1950	
FBI - NEW YORK	
MAIL ROOM	
RECORDS SECTION	
TELETYPE UNIT	
TRAINING CENTER	
LABORATORY	
COMMUNICATIONS SECTION	
IDENTIFICATION DIVISION	
INVESTIGATIVE DIVISION	
LEGAL COUNSEL	
OFFICE OF THE ATTORNEY GENERAL	
OFFICE OF THE DIRECTOR	

JRL:JP (46)
65-15136

Approved: *Chor*
Special Agent in Charge

Sent 12:00 M Per 11

65-15136-149

DIRECTOR

February 16, 1950

PERSONAL ATTENTION: H. B. FLETCHER

SAC, BOSTON

AIR MAIL SPECIAL DELIVERY

FOOCASE

STATE S. R. (b)(1)

FILE: 65-58068

[REDACTED] (b)(1)

[REDACTED] (b)(1)

Special Agent FREDERICK W. CONNORS of this office has pointed out that Chapter 10 of the Smyth Report is entitled, "The Separation of the Uranium Isotopes by Gaseous Diffusion." This chapter has been reviewed in Boston. It is noted that it is at page 125 of the Superintendent of Documents Issue of the Smyth Report dated August, 1945.

[REDACTED] (b)(1)

The New York City report dated February 9, 1950, of Special Agent JOHN R. MURPHY, entitled, "EMIL KLAUS FUCHS, was - ESPIONAGE," at page 3, sets forth the names of British and Kellix representatives to discuss diffusion in December, 1943. Among the Kellix representatives was "H. BENEDICT." The latter person is believed to be likely identical with WILSON BENEDICT, subject of a AEA-1 investigation initiated on Sulet to Newark dated

65-15136-17

FEB 17 1950
NEW YORK

[Signature]

65-3304

cc: NEW YORK, NEWARK, WASHINGTON FIELD, LOS ANGELES, SAN FRANCISCO

MEMO - DIRECTOR
RE - POCCASE
ESPIONAGE - R

[REDACTED] (b)(1)
BUFILE 765-88098

The Bufile number on the latter matter is 110-7102.

The Boston report of SA FREDERICK W. CONNORS, dated May 20, 1947, reflects that WANSON BENEDICT was acquainted with ISIDOR AYDUR. In this respect the Bureau's attention is particularly directed to Boston letter to Bureau dated September 25, 1948, and entitled, "ISIDOR AYDUR, was. - INTERNAL SECURITY - R, Paf. 5 I.9." This letter reflects that AYDUR was acquainted with WOMAN VILL, Canadian Scientist named by GOUZENO as a part of the Soviet Espionage System in Canada.

[REDACTED] (b)(1)
The Bureau's attention is further directed to its file on WANSON BENEDICT's brother, WILLIAM SIDNEY BENEDICT, was., Physicist, Commerce - LGS." The Boston Division submitted a report on July 12, 1948, by SA BRENTON S. GORDON on the latter case. It reflects that WILLIAM SIDNEY BENEDICT was acquainted with WENDELL HINKLE FURRY, a brother-in-law to ISRAEL HALPERIN. Thumbnail sketches of both FURRY and HALPERIN are contained at pages 50, 51 and 52 of the above mentioned report of SA GORDON in the WEINSTEIN case.

[REDACTED] (b)(1)
ROBERT WEINSTEIN, since the submission of SA GORDON's report concerning him, has admitted to GORDON that he belonged for many years to a Cambridge, Mass., branch of the Communist Party in which both Mrs. AYDUR and Mrs. FURRY were members. He has attended meetings at the

MEMO - DIRECTOR
RE - FOCASE
ESPIONAGE - R

[REDACTED] (b)(1)
BUFILE 765-59088

homes of both. He is of the opinion, however, that Mrs. AYDOR has not been an active member for several years and he, himself, claims to have been inactive in the past two or three years. He notes further that he never actually knew WENDELL PURDY and ISADOR AYDOR as Communist Party members. They would absent themselves from their homes when meetings were held therein. He has a personal opinion that they were probably members predicated upon their wives' admission of membership, in their respective presence, and further their whole course of conduct as such as to demonstrate no hostility to the Communist Party, USA.

The foregoing would indicate that an associate of BENEDEICT would be, or could be, at least passingly familiar with the circumstances in the HEINKEAN home and with the Party situation and intellectual circles in Cambridge, Mass.

[REDACTED]

Don't by N.Y.O. Newark has been furnished with a copy of this letter because **[REDACTED]** BENEDEICT, according to information contained in the Boston file, resided as of 1947 at 465 Topping Hill Road, Westfield, New Jersey. Newark is requested to furnish a copy of a photograph of HANSON BENEDEICT, if it has such in its possession. (b)(1)

It is further suggested that the New York Division might well find it profitable to review the above cited certification of the Smyth Report if it has not already done so inasmuch as it traces the beginnings and development of the process of thermal diffusion at Columbia, Kellix, etc.

New York, New York

February 17, 1950

MEMO

RE: POCCASE

[REDACTED]

[REDACTED]

A. H. BELMONT
ASAC

AMBIG TC

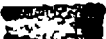
65-15136-180
FBI - NEW YORK
FEB 17 1950

FILE # 65-15136

SUBJECT Klaus Fuchs

SERIAL 191 DATE _____

CONSISTING OF 1 PAGES

is exempt from disclosure, in its entirety,
under (b)(1) as it has been classified pursuant
to Executive Order 11652 as it contains
information which would disclose an intelligence
source. This serial bears the Classification
Officers number 

FEDERAL BUREAU OF INVESTIGATION
UNITED STATES DEPARTMENT OF JUSTICE

NEW YORK, N. Y.

Transmit the following Teletype message to:

BUREAU
CHICAGO
KNOXVILLE...URGENT

~~CONFIDENTIAL~~

~~_____~~ - b1
FOOCASE, ESP-R. CHICAGO WILL OBTAIN PHOTO OF DR. MALCOLM DOLE, BORN
MARCH FOURTH NINETEEN ZERO THREE, WHO WAS EMPLOYED ARGONNE NATL LABORATORIES
AS UNIVERSITY PARTICIPANT. KNOXVILLE WILL OBTAIN PHOTO AT OAK RIDGE OF
SAMUEL PODGOR, WAS, PODGOR, PODSER, BORN JULY NINTH, NINETEEN TWELVE,
WHO APPLIND FOR EMPLOYMENT AS PHYSICIST WITH FAIRCHILD ENGINE AND AVIATION
CORP. SEND PHOTOS AMSD TO BUREAU, BOSTON AND NY. L

APPROPRIATE AGENCIES
AND FIELD OFFICES
ADVISED BY ROUTING
SLIP (S) OF CLASS-LP
DATE 10/7/78

SCREINT

JCV:IM
65-15136

RRR
~~_____~~ c
b1

Classified by 1259
Exempt from GDS, Category 2
Date of Declassification 10/3/78

~~CONFIDENTIAL~~

Approved: [Signature]
Special Agent in Charge

Per [Signature]

FEDERAL BUREAU OF INVESTIGATION
UNITED STATES DEPARTMENT OF JUSTICE

~~CONFIDENTIAL~~

NEW YORK, N.Y.

[Redacted] b1

Transmit the following Teletype message to:

BUREAU
ALBUQUERQUE...URGENT

[Redacted] b1

FOOCASE, ESP-R. ALBUQUERQUE LETTER DATED FEBRUARY SEVENTH LAST, PAGE SIX,
CONTAINS NAME GERSON GUSDORF. ADDRESS ILLEGIBLE, REGISTERED AT LA FONDA HOTEL,
SANTA FE, JUNE FOURTEENTH, FORTYFIVE. NY INDICES NEGATIVE. SUGGEST BUREAU
& ALBUQUERQUE CHECK THEIR INDICES TO IDENTIFY GUSDORF IF POSSIBLE. ALBUQUERQUE
ALSO REQUESTED TO CHECK HOTEL REGISTRATION FOR JULY AND AUGUST FORTYFIVE FOR
ANY ADDL REGISTRATIONS BY GUSDORF FOR INFO ALBUQUERQUE. ROBERT HEINEMAN
ADVISED PHOTO OF PHILIP MORRISON RESEMBLED UNSUBS MOUTH BUT UNSUB HAD
CONSIDERABLY LESS HAIR AND MUCH MORE FRIENDLY EXPRESSION. ALBUQUERQUE
REQUESTED TO OBTAIN SURVEILLANCE PHOTO OF MORRISON IF HE IS STILL IN U.S. TERRITORY
AND IF NOT ANOTHER VIEW OF HIM FOR EXHIBITION.

SEARCHED _____ INDEXED _____
SERIALIZED _____ FILED _____
DATE 1/17/78

JRM:IM
65-15136

RRR [Redacted] b1

Classified by 1259
Exempt from GDS Category 2
Date of Declassification Indefinite 9/25/78

~~CONFIDENTIAL~~

Approved: _____
Special Agent in Charge

Sent _____ Per _____

65-15136-193

- MR. SCHEIDT
- MR. BELMONT
- MR. WIDZAN
- MR. COLLIER
- MR. GRANVILLE
- MR. HUGHES
- MR. KENNEDY
- MR. LEVVIS
- MR. MARCHESNAULT
- MR. EAGAN
- NIGHT SUPERVISOR
- MR. KING
- MR. TOLSON
- MR. WALSH
- MR. WOLL
- CHIEF CLERK
- PROPERTY CLERK
- TRAINING UNIT

Handwritten initials

NYC 1 FROM PHILA 24 12-15 AM
 SAC NEW YORK

FOOCASE ESP R. RE NY TEL TWENTYTHIRD IN WHICH YOU REQUESTED PHILA
 TO CHECK INDICES ON DR. ERNST BERGMAN. PHILADELPHIA INDICES REFLECT
 NO RECORD DR. ERNST BERGMAN.

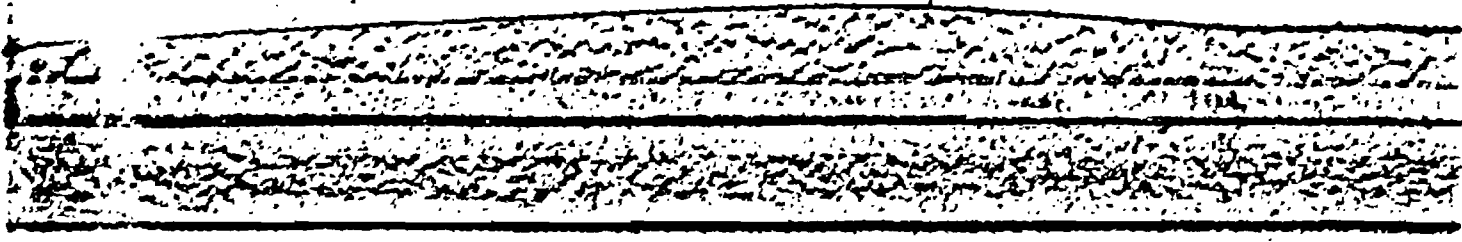
CORNELIUS

END
 PH R 1 NYC

65-15136-20

SEARCHED
 INDEXED
 SERIALIZED
Handwritten signature

Handwritten initials BR



February 21, 1950

Excerpt from
SAC LETTER NO. 14
Series 1950

(G) FOCASE -- In the interests of economy the Bureau desires that the code word "FOCASE" be used in all communications, other than investigative reports, which relate to the case entitled "Emil Julius Klaus Fuchs, was., Espionage-R."

65-15136-215

B. H.	
6 FEB 2, 1950	
N. Y. C.	
ROUTED TO	FILED
<i>Murphy</i>	

607 U.S. Court House
Foley Square
New York 7, New York

February 24, 1950

The National City Bank of New York
65 Wall Street
New York 5, New York

FOOCASE
ESPIONAGE - R

Attention: [REDACTED]

(b)(7)(D)

Gentlemen:

In connection with an official investigation being conducted by this office, it is requested that you make available to Special Agent Martin J. McGuinn all records relative to the account of:

Abraham Brothmann and related
accounts

It is requested that your depositor not be notified of this inquiry.

The information furnished by you will not be disclosed to any unauthorized persons without the use of a subpoena duces tecum directed to your bank.

Your cooperation in this matter is greatly appreciated.

Very truly yours,


EDWARD SCHMIDT
Special Agent in Charge

MSM:IM
65-15136

*orig. delivered
correctly*

65-15136-228

FILE # 65-15136
SUBJECT Klaus Fuchs
SERIAL 232 DATE _____
CONSISTING OF 2 PAGES


is exempt from disclosure, in its entirety,
under (b)(1) as it has been classified pursuant
to Executive Order 11652 as it contains
information which would disclose an intelligence
source. This serial bears the Classification
Officers number 

FILE # 65-15136

SUBJECT Klaus Fuchs

SERIAL 233 DATE _____

CONSISTING OF 1 PAGES

is exempt from disclosure, in its entirety, under (b)(1) as it has been classified pursuant to Executive Order 11652 as it contains information which would disclose an intelligence source. This serial bears the Classification Officers number 

Director, FBI

February 27, 1950

SAC, New York

AMTORG TRADING CORPORATION;
INTERNAL SECURITY - R
REGISTRATION ACT
(Bureau File No. 61-5281)

[REDACTED]

(b)(1)

[REDACTED]

(b)(1)

Concerning the letter to HARRY HOPEKAS, JOHN POLL was uncertain as to whether he retained a copy. He said he would look for it as well as for some record of ROBERTS' telephone number, and he promised to make the letter available to this office if located.

[REDACTED]

(b)(1)

[REDACTED]

(b)(1)

cc: NY 65-15136
cc: NY 65-14753
RPH:KTH
65-7471

65-15136-265A

Letter/Director, FBI
NY 65-7471

[REDACTED] (b)(1)

[REDACTED] (b)(1)

[REDACTED] (b)(1)

JOHN POLL declared the Chief Steward, a Portuguese Hawaiian, and the radio operator of the ship were Communists. He could not identify them by name or description.

The man from the "SS MARY LUCKENBACH" he identified as one "SCOTTY", who had been a seaman (engineer) for about ten years previously. Though he said he had known "SCOTTY" since about 1932, he was unable to give his name. According to him, the "MARY LUCKENBACH" blew up and "SCOTTY" was killed on July 3, 1943.

JOHN POLL furnished additional personal information about himself to the effect that he was still unemployed. When interviewed he was about to go to Boston to look for a position in newspaper work. He said he also expected to contact Tufts College, where he had hopes of a theological scholarship or fellowship. He said that his family name originally was "JAN POLSEY", which was shortened to JOHN POLL. He added that he has a brother, ALEXANDER, who is an aide at the United States Legation in Belgrade, Yugoslavia.

JOHN POLL promised to advise this office if he should succeed in locating the copy of the letter to HARRY HOPKINS, or the telephone number of ROBERTS. The Bureau will be advised if either of these are received.

Copy of this letter is designated to the case entitled "UNKNOWN SUBJECT re. 'Roberts', Rabinowitz, Mr. Mich - ESPIONAGE - R", Bureau file 65-57981.

Office Memorandum • UNITED STATES GOVERNMENT

TO : SAC, New York

DATE: 2-28-50

FROM : SAC, Boston

SUBJECT: FOOEASE

ESTICORAGE (R)

(b)(1)

65-15136

ReNYtel February 20, last, requesting that LOUIS R. KORN, formerly residing in Apartment 2B, 128 West 77 Street, from June to December, 1944 be interviewed regarding any information concerning KLAUS FUCHS.

LOUIS R. KORN, 687 Boylston Street, Boston, Massachusetts, was interviewed on February 29, 1950 regarding any knowledge he might have concerning KLAUS FUCHS.

KORN advised he had resided at 128 West 77 Street, from June to December, 1944, along with his wife, in Apartment 2B at this address. KORN had no information concerning FUCHS and was unable to identify a photograph of FUCHS other than to say he had seen the same photograph appearing in the public press but he had been able at no time to associate the photograph with any person he had seen before.

Mrs. LOUIS R. KORN, 687 Boylston Street, Boston, Massachusetts, stated she was associated in business with her husband and had resided with him at 128 West 77 Street, from June to December, 1944. Mrs. KORN had no information concerning KLAUS FUCHS and was unable to recognize a photograph of FUCHS.

Mrs. KORN said that she did recall that sometime in the late summer or early fall of 1944 an unidentified man had knocked at her door one morning, requesting to be directed to the apartment of one of the occupants at 128 West 77 Street, New York City, whose name Mrs. KORN could not recall. According to Mrs. KORN, this unidentified man who appeared at her apartment door had the following description:

Age	45 to 50
Height	5'6" or 5'7"
Weight	155#
BUILD	Stocky
Race	White
Hair	Blond, turning gray
Sex	Male
Face	Square and muscular
Nose	Square
Voice	Husky
Dress	Wearing dark navy or black shabby coat

With respect to the above described man, Mrs. KORN said that she could not be certain, but it was her recollection, that this man was carrying a package.

RFD:md
65-3304
65-3319
65-3320
Air Mail

Searched _____
Serialized _____
Indexed _____

FBI - NEW YORK
MAR 1 1950

Murphy

65-15136-774

This package was described by Mrs. KORN as "looking like a pair of shoes covered with manila wrapping, in a flattened condition. Mrs. KORN said that this unidentified man impressed her as "possibly being a truck driver or delivery man." Mrs. KORN said this man spent probably "no more than 30 seconds at my door."

Photographs which have been furnished to the Boston Office by other offices in connection with this case, which have already been shown to ROBERT and KRISTEL BLINE AN, brother-in-law and sister respectively of KLAUS FINKS, were displayed to Mrs. LOUIS R. KORN and she was unable to effect an identification of any of these photographs.

In connection with these photographs, however, Mrs. KORN pointed out that the photographs of HANS A. BETHE, HARRY GRUNDFEST and EUGENE FRANKLIN COLEMAN bore some of the characteristics of the unidentified man who had come to Mrs. KORN's door, seeking the location of some unidentified person at 128 West 77 Street, New York City. Mrs. KORN stated that the unidentified visitor had a face somewhat similar in shape to that of HARRY GRUNDFEST in that the unidentified man had some of the "same strong muscular lines." Mrs. KORN added that the unidentified visitor did not appear to be as dark complexioned as HARRY GRUNDFEST and was similar in complexion to HANS BETHE.

With respect to the photograph of EUGENE FRANKLIN COLEMAN, Mrs. KORN stated that the unidentified visitor who appeared at her door had the same general square face as Coleman's photograph.

It is noted again, however, that she did not effect an identification of any of these photographs.

It is noted again that neither KORN was able to identify FINKS; that neither KORN has any semblance of a recollection that the unidentified visitor who sought some other tenant in that dwelling was seeking FINKS. In view of the apparent remoteness of the KORN recollections at the instant inquiry, the foregoing information is furnished New York only so that it may evaluate the above data in the light of its other inquiry at the pertinent address.

In the event that the New York Division finds there is some information of value in the foregoing, it is suggested that additional photographs be forwarded Boston for exhibition to the KORNs who appeared to be at once cooperative and discreet. In the absence of further instructions from New York, Boston will not pursue this line of inquiry further.

Mr. and Mrs. LOUIS R. KORN advised that in their opinions an elderly couple who had resided in a front apartment on the second floor at 128 West 77 Street in 1944 would "probably be the best source of information" regarding the

other occupants of the building at 128 West 77 Street. The KORNS said they made this observation due to the fact that it was their belief that this couple spent a great deal of time during the working day at 128 West 77 Street. The KORNS did not know the name of this couple.

FILE DESCRIPTION

NEW YORK FILE

SUBJECT Emil Fucho

FILE NO. 65-15136

VOLUME NO. 3

SERIALS 284
thru
395

NOTICE

THE BEST COPIES OBTAINABLE ARE INCLUDED IN THE REPRODUCTION OF THE FILE. PAGES INCLUDED THAT ARE BLURRED, LIGHT OR OTHERWISE DIFFICULT TO READ ARE THE RESULT OF THE CONDITION AND OR COLOR OF THE ORIGINALS PROVIDED. THESE ARE THE BEST COPIES AVAILABLE.

Serial	Date	Description (Type of communication, to, from)	No. of Pages		*	Exemptions used or, to whom referred (Identify statute if (b)(3) cited)
			Actual	Released		
284	3-1-50	HQ Transmittal copy to N.Y. captioned: Foccase teletype	1	1	Yes	
284 ^A	3-1-50	N.Y. letter to Telephone Co.	1	1		
284 ^B	3-1-50	N.Y. letter to Telephone Co.	1	1		
284 ^C	3-1-50	N.Y. letter to Telephone Co.	1	1		
285	2-25-50	Bu. teletype to CV captioned: Foccase	1	1		01
286	2-28-50	N.Y. letter to HQ captioned: Foccase	4	—	Yes	see bufile 65-58805
287	2-28-50	N.Y. letter to HQ captioned: Foccase	3	3	Yes	
288	2-27-50	N.Y. letter to HQ captioned: Foccase	3	—	Yes	see bufile 65-58805
289	2-17-50	AL. report to HQ	6	—	Yes	see bufile 65-58805
290	2-1-50	AL. letter to HQ captioned: Foccase	1	1	Yes	see bufile 65-58805
291	3-1-50	BS letter to HQ captioned: Foccase	1	—	Yes	see bufile 65-58805
292	2-24-50	O.M. letter to HQ captioned: Foccase	2	—	Yes	see bufile 65-58805

File No: 65-15136Re: Emil FuchsDate: 12-77

(month/year)

Serial	Date	Description (Type of communication, to, from)	No. of Pages		*	Exemptions used or, to whom referred (Identify statute if (b)(3) cited)
			Actual	Released		
293	3-1-50	H.Q. letter to O.M. captioned: Foccase	1	—	Yes	see bufile 65-58805
294	3-1-50	P.H. letter to HQ captioned: Foccase	3	3		
295	2-28-50	A.L. letter HQ captioned: Foccase	1	1		
296	3-2-50	N.Y. letter to HQ captioned: Foccase	1	1		
297	3-2-50	N.Y. Teletype to HQ captioned: Foccase	1	1	Yes	
298	3-2-50	B.S. Teletype to N.Y. captioned: Foccase	1	1	Yes	
299	3-1-50	B.S. letter to HQ captioned: Foccase	3	3	Yes	
300	3-1-50	HQ letter to SAC captioned: Foccase	1	—	Yes	see bufile 65-58805
301	3-1-50	B.A. letter to HQ captioned: Foccase	7	—	Yes	see bufile 65-58805
302	2-2-50	N.Y. letter to HQ captioned: Foccase	2	—	Yes	see bufile 65-58805
303	3-2-50	N.Y. letter to HQ captioned: Foccase	2	—	Yes	see bufile 65-58805
304	3-2-50	HQ letter to B.S. captioned: Foccase	1	—	Yes	see bufile 65-58805

*Designated to or from Bureau and/or Albuquerque, New York