



THE BLACK VAULT

This document was obtained from The Black Vault, an online database of declassified government documents. This particular record is housed in the MKULTRA/Mind Control Collection, a compilation of more than 20,000 pages declassified by the Central Intelligence Agency (CIA).

The entire collection is free to download and online at:

<http://mkultra.theblackvault.com>

58

May 8, 1972
Volume 3 Number 19

BEHAVIOR TODAY

162

Police Prep for Pops

acing prospect of two political conventions in one summer, Miami Beach police chief Rocky Pomerance is beefing up his software. Determined to prevent a replay of Chicago '68, Pomerance asked humanistic psychologist Denis O'Donovan and team to put 300-member police force through intensive human relations training. . . Weekly sessions, starting early this year, have ranged from Constitutional law and civil rights to creative crowd control, O'Donovan tells BT. Techniques include simulation, meetings with protest leaders, role playing. . . During one role switch, an officer, asked what he would do if he were a shrink, responded: "I'd take careful notes and write a book." O'Donovan is taking careful notes, plans to write book. He's at Florida Atlantic U., Boca Raton 33432.

Research Tips for Crime Fighters

Researchers met enforcers at Justice Dept.-sponsored symposium on law enforcement science and technology last week in Washington, D.C. Challenge to enforcers: use behavioral knowledge to stem crime and improve corrections.

Explanations of prison violence that ignore social fabric of prison won't work, U. Illinois sociologist Edith Flynn told meeting. Prisons are run with tacit consent of inmates, and administrators know it. Any change that disrupts intricate, informal social relations between inmates and staff raise odds of violence, whether changes increase control or reform. Flynn said her analysis is no excuse for status quo, but a plea for change management. She urged officials to read new model guidelines on inmate rights from Illinois Dept. of Corrections. Write her for paper and info at Soc. Dept., U. of Illinois, Urbana 61801.

Yale sociologist Albert Reiss, who has studied police crime for some time, urged cops to stop focusing on criminals, start focusing on crime and to become professional. Among his tips, environmental prevention: tell retailers shoplifting isn't a crime unless merchants take steps to protect merchandise. "If people will buy on impulse, they'll steal on impulse," where merchandise is out for grabs.

Psychologist Saleem Shah, head of NIMH Center for Study of Crime and Delinquency, urged using research to divert funds from corrections. He plugged completed first phase of study by sociologist Marvin Wolfgang, at U. Penn., for important policy clues. Wolfgang tracked all 10,000 boys born in Philadelphia in 1955 to get first sophisticated probability analysis of delinquency. Of group, 3,500 had one recorded run-in with law; almost half had no further trouble. Six percent were chronic offenders, accounting for more than half delinquent acts of the total group. Question, said Shah, is here to invest energy and money for intervention (Wolfgang suggests after third offense). Study also shows no graduation in seriousness of offenses. U. Chicago Press will publish study, *Delinquency in a Birth Cohort*, in June. Wolfgang is to work on second phase, taking sample of original group past age 18.

Psychiatrists Pan Shrink Power

Two NIMH psychiatrists have blasted the Amer. Psychiatric Assn.'s stand on mental health coverage under national health insurance as unworkable, self-serving, inappropriate to delivering adequate care and sure to bankrupt the mental health service system. . . In a private position paper to be sent to key members of Congress, E. Fuller Torrey and Robert Taylor claim APA's demand for extensive hospitalization benefits and for recognition of psychiatrists as chief care providers not only would raise costs but also would create a superficial manpower shortage, enabling psychiatrists to sluff off difficult cases. The stand also ignores research on mental health treatment, Torrey and Taylor assert.

In brief, they maintain that hospitalization is less effective than cheap alternatives—day-care and walk-in services—and that psychiatrists are no more effective than psychologists and other pros. To back up contention, they propose financial restrictions on use of psychiatrists in insurance-paid psychotherapy and other non-medical services.

Paper is bound to stir interest in House and Senate health subcommittees, especially Senate subcmte. where one temporary staffer is psychiatrist Joseph Perpich. (In deference to past requests from NIMH director Bartram Brown, please write Taylor for position paper at his home address: 5C01 White Flint St., Kensington, Md. 20795.)

Glimpse at Nader's NIMH Report

Ralph Nader already is getting letters from mental health pros scared silly that the forthcoming Nader Raider exposé of the mental health complex will hurt business. According to Nader ace Franklin Chu, chief investigator on the study, brief talks by Nader folks at recent meetings have stirred up justified fears that NIMH and mental health pros are in for a drubbing. . . Fears were fueled even more by limited circulation of a content summary that may bear only historical interest by the time the report comes out (best estimates now are for summer release).

- Main issue will be neglect of the consumer. The rest will be icing, but the icing has pros trembling. Examples the summary include:
- Portrayal of mental health complex as mental health mafia, founded and fed by combination of professional self-interest, congressional sugar daddies and a powerful health lobby.
- Argument that, like it or not, what's needed for mental health is not pros and programs but better jobs, housing and social support mechanisms.
- Dirty details of elitism, cronyism and power-playing at NIMH, at universities and in professions that have little to do with delivering mental goods.
- Charge of over-emphasis on research and expensive services and claims of over-abundance of low quality research, lack of research direction and dearth of direct problem research.

Worst of all, report will give general impression that mental health pros are no better or worse than other pros and that Nat'l Institute of Mental Health officials are very much like other government bureaucrats.

162

LOGJAM: Study of jail suicides by psychiatrist Bruce Danto suggests hidden evil in court backlogs and stiff bail policies. Of 10 suicides at Wayne County (Mich.) jail over three years, four prisoners had no bond set and three had bonds of \$10,000 or more. "Thus," says Danto, "seven out of the 10 suicides could not see their way clear to leaving jail in the foreseeable future." Write Danto at Suicide Prevention Center, Psychiatric Inst., 1151 Taylor, Detroit 48202.

■ **MONEY:** New initiation and development grants to help poverty areas plan mental health services available now from NIMH. Grants up to \$50,000 each are for assessing local needs, designing services. Contact assoc. dirs. for mental health at HEW regional offices. List of regional offices from Art Cosing, Rm. 11C-17, NIMH, 5600 Fishers Lane, Rockville, Md. 20952. ■ **SYMPOSIA:** First Western Hemisphere Conference on Acupuncture, Kirlian Photography and the Human Aura features Stanley Krippner, Thelma Moss, J.R. Worsley of College of Chinese Acupuncture, London. Tickets (\$7) for day-long symposium May 25 at United Engineering Center, 345 47th St., New York City, available at door. Info from Carrie Harris, 515 Howard Ave., Staten Island 10301. . .Phenomenologically oriented Du-



quesne U. psychology dept. sponsors Theories and Applications of Logotherapy course July 10-28, to be taught by Viktor Frankl. Course for credit costs \$213, but public is invited to lectures for \$1. Write Graduate Dean, Duquesne, Pittsburgh, Pa. 15219. . .Youth and Drugs Institute June

18-19 at Northeastern U. in Boston. Designed for school and community drug program personnel. Info from Taylor Roth, Northeastern, 360 Huntington Ave., Boston, Mass. 02115. ■ **UP FROM ASHES:** Looks like Stanford Research Inst. has resurrected shortlived White House National Goals Research staff. SRI has set up Center for the Study of Social Policy to help decision-makers develop and forecast alternative programs. Washington office, headed by NGR staffer Charles Williams, is at 1611 N. Kent St., Arlington, Va. 22209. ■ **EDUCATION 1980:** Enrollment in nation's colleges will increase 55 percent during 1970's, will reach total of 13.3 million by fall 1980, predicts Nat'l. Center for Educational Statistics. Two-year colleges will grow fastest (up 84 percent by 1980, from 1.6 to 3 million). Report, Projections of Educational Statistics to 1980-81, also contains data on per-pupil expenditures, breakdown on degrees to be awarded, teachers' salaries. It's available this summer, GPO, Wash., D.C. 20402. . .Study on future of Yale recommends reducing four-year curricula to three for baccalaureate degree. Study, by Yale faculty group headed by political scientist Robert Dahl, urges other innovations aimed at re-

behavior Today The Weekly Newsletter Del Mar, California 92014

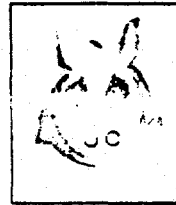
tor
J. Jeffrey Jones
Managing Editor
Peter Koenig
Assistant Managing Editor
Patrice Moran
Search Editor
Cathie Kanut
Director
Nat Antler

Washington Editor
Pamela Moore
Assistant Editor
Osborne Roberts
Reporter
T. George Harris

Publisher
John Suhler
Business Manager
Ann Usher
Reader Service
Mark Webb
Consulting Editors
Arthur H. Brayfield, Ph.D.
George S. Reynolds, Ph.D.
Peter H. Rossi, Ph.D.

centering college around student. Limited copies available free, President's Office, Yale U., New Haven, Conn. 06520.

■ **ENVIRONMENT:** Bojabi Tree House Puppet Theater takes ecology message to grade schools. Shows educate kids on causes, prevention of pollution; are especially effective, says producer Jeff Peyton, because puppets are underdeveloped as teaching tool. Write Peyton, P.O. Box 270, New Haven, Conn. 06502. ■ **PUBLICATIONS:** Editor Jacques



Mehlet hopes new international quarterly, Cognition, will provide forum for cognitive research—downplaying information processing, emphasizing child development, psycholinguistics, related fields. First issue this spring, with articles by T. Bower, Noam Chomsky, Jonas Langer. Individual subs \$12, Mouton, P.O. Box 482, The Hague, Netherlands. Send manuscripts to Thomas Bever, Psych. Dept., Schermerhorn Hall, Columbia U., New York City 10027. . .Spiritual Community Guide includes list of centers in U.S., Canada; catalogs Eastern spiritual methodologies; lists magazines, books of interest. \$2.95 from Spiritual Community, Box 1080, San Rafael, Calif. 94902.

■ **PSYCHING CONGRESS:** Amorphia, pro-pot legalization group, launches Washington's first psychedelic drug lobby. Chief lobbyist is 28-year-old lawyer Gordon Brownell, former Nixon staffer and Reagan worker, who still works part time for GOP strategist Kevin Phillips. Focus is on decriminalization and importance of credibility with users in drug ed. Contact Blair Newman, Box 744, Mill Valley, Calif. 94941. ■ **INPUT:** Researchers Pat McNaughton and Frank

Bischel want info on studies illuminating classroom discourse and verbal interaction. Pair plan symposium at Internat'l Congress of Applied Linguistics in Copenhagen in August. Contact them at Claremont Inst. of Linguistic Studies, Claremont, Calif. 91711. ■ **DEPRESSION:** U. Michigan's Inst.

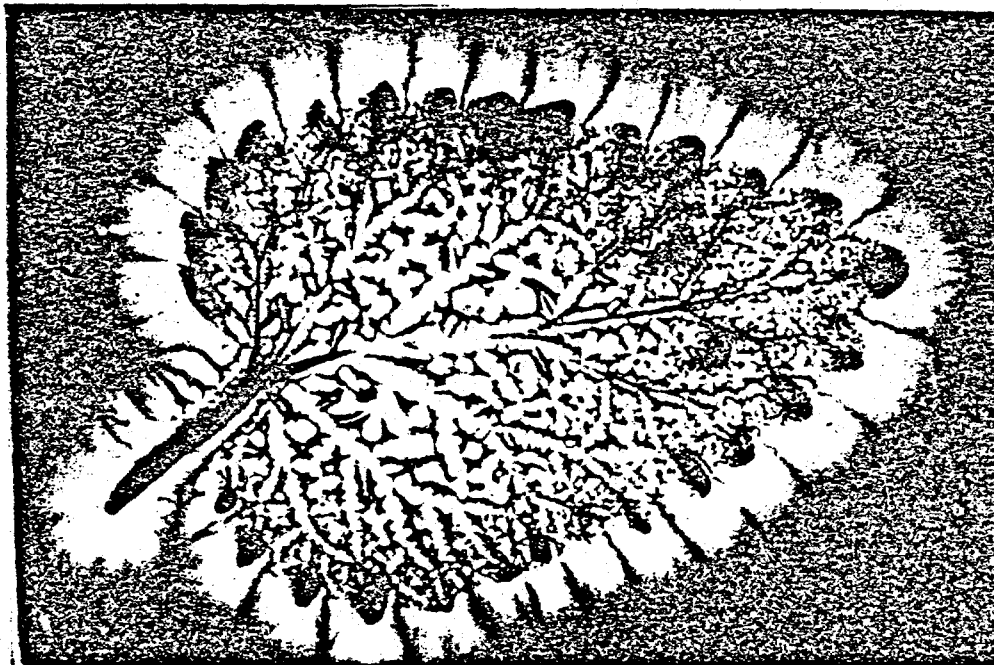
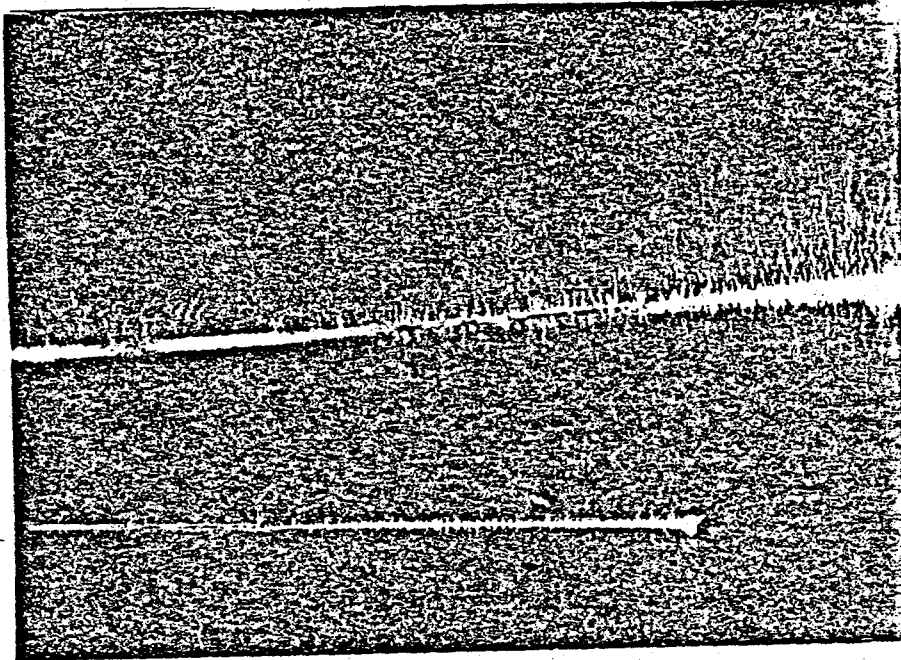
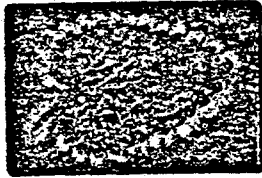
for Social Research is conducting first annual survey of state of nation's mental health. Emphasis is on study of depression, but survey will also cover positive attributes of mental health. Contact survey dirs., psychiatrist Monica Blumenthal, epidemiologist Sidney Cobb, psychologist John French Jr. (Ann Arbor 48106). ■ **MEDIA:** Deadline May 15 for Amer. Psychological Foundation's 1972 nat'l media awards. Criterion: "reporting which increases the public's knowledge and understanding of psychology." Categories: newspaper; TV, radio, movie; magazine, book, monograph. For info and nominations, contact Jim Warren, APA, 1200 17th St., NW, Wash., D.C. 20036. ■ **COO-COO:** "Corporations may follow Skinnerian principles," allows behaviorism critic M.

Brewster Smith, "because corporations are basically pigeon-brained." Good way to make industry sensitive to environmental quality, Smith told recent Western Psychological Assn. meeting, would be "to set up a suitable reinforcement schedule of profit and loss." He's at U.Cal-Santa Cruz (95060).

BEHAVIOR TODAY is published weekly by Communications/Research/Machines, Inc., Del Mar, Calif. 92014, publishers of PSYCHOLOGY TODAY and CFM BOOKS. President: Charles C. Tillingshast. Vice Presidents: Richard Muller, Janet S. Mouton, Paul N. Lazarus III, Wayne E. Chouinard. Second class postage rates paid at Del Mar, Calif., and additional offices. Copyright 1972 by Communications/Research/Machines, Inc. MAY NOT BE REPRODUCED IN ANY FORM WITHOUT WRITTEN PERMISSION.

Direct SUBSCRIPTION CORRESPONDENCE to Box 2993, Boulder, Colo. 80302. When changing address include address label from latest issue mailing envelope, along with new address. Allow 6-8 weeks for change to be affected. Rates: \$30 a current copy (within four weeks of publication date), \$1.00 for back issues, \$20 a year. U.S., its possessions and Canada, add \$12 (Air Mail) a year elsewhere.

163



163

